

TAMAULIPAS

## ---RED FEDERAL LIBRE---

1 Acceso a Puente Internacional Reynosa - Pharr	MEX-002
2 Altamira - T. C. (Petrocel -Puerto Industrial Altamira)	MEX-080
3 Cd. Valles - Cd. Victoria	MEX-085
4 Cd. Valles - Tampico	MEX-070
5 Cd. Victoria - Matamoros	MEX-101-180
6 Cd. Victoria - Soto La Marina	MEX-070
7 Ciudad Victoria - Monterrey	MEX-085
8 Corredor Internacional Reynosa	MEX
9 Ent. El Huizache - Antiguo Morelos	MEX-080
10 Ent. Tula - Cd. Victoria	MEX-101
11 Estación Manuel - T. C. (Cd. Victoria - Soto La Marina)	MEX-180
12 González - Llera de Canales	MEX-081
13 Ignacio Zaragoza - T. C. (Ciudad Victoria - Monterrey)	MEX-083
14 Las Urracas - T. C. (Matamoros - Reynosa)	MEX-097
15 Libramiento de Reynosa	MEX-002
16 Libramiento de San Fernando	MEX-101-180
17 Libramiento de San Germán	MEX-101-180
18 Libramiento de Santander Jiménez	MEX-101
19 Libramiento Estación Manuel - González	MEX-081
20 Libramiento General Francisco Villa	MEX-101-180
21 Matamoros - Playa Lauro Villar	MEX-002
22 Matamoros - Reynosa	MEX-002
23 Monterrey - Mier	MEX-054
24 Monterrey - Nuevo Laredo (Libre)	MEX-085
25 Monterrey - Reynosa (Libre)	MEX-040
26 Nuevo Laredo - Piedras Negras	MEX-002
27 Paras - Nueva Ciudad Guerrero	MEX-030
28 Petrocel - Puerto Industrial Altamira	MEX-080
29 Ramal a Puente Tampico	MEX-180
30 Ramal de Acceso a Puente Anzaldúas	MEX
31 Ramal de Acceso al Puente Internacional Laredo III	MEX
32 Reynosa - Nuevo Laredo	MEX-002
33 Soto La Marina - La Coma	MEX-180
34 Tampico - Cd. Mante	MEX-080
35 Tuxpam - Tampico	MEX-180
36 Viaducto de Reynosa	MEX

## ---RED FEDERAL DE CUOTA---

37 Libramiento de Reynosa Sur II	MEX-040D
38 Libramiento Poniente de Tampico (Cuota)	MEX-070D
39 Matamoros - Reynosa (Cuota)	MEX-002D

## ---RED ESTATAL LIBRE---

40 Aldama - Barra El Tordo	TAM
41 Barretal - Nueva Villa de Padilla	TAM-001
42 China - Méndez	NL-TAM
43 Ébano - Estación Manuel	SLP-TAM
44 El Limón - Ocampo	TAM-019
45 Ent. Huisachito - Nuevo Laredo	NL-001-TAM
46 Ent. Las Blancas - Río Bravo	TAM-003
47 La Joya - Méndez	TAM
48 Las Yescas - Valle Hermoso	TAM
49 Libramiento de Cd. Victoria	TAM
50 Libramiento de Mier	TAMPS
51 Libramiento de Nuevo Laredo	TAM
52 Libramiento de Nuevo Laredo II	TAM
53 Libramiento de Río Bravo	TAM
54 Los Guerra - Los Herreras	TAM-NL
55 Peña Blanca - Cd. Camargo	NL-TAM
56 Potrero Nuevo - Rancho El Mezquital	TAM
57 Ramal a Gómez Farías	TAM-020
58 Ramal a Xicoténcatl	TAM
59 San Fernando - Carboneras	TAM
60 Soto La Marina - La Pesca	TAM-070
61 T. C. (Valle Hermoso - Empalme) - Matamoros	TAM-005
62 T. C. Libramiento Cd. Victoria - San Antonio	TAM-126
63 Valle Hermoso - Empalme	TAM-004

## ---CARRETERAS INTEGRADAS POR TRAMOS FEDERALES Y ESTATALES---

64 Ent. El Ojito - Abasolo	MEX-107-TAM
65 Santander Jiménez - Abasolo	MEX-107-TAM





TAMAULIPAS

1 CARR: Acceso a Puente Internacional Reynosa - Pharr

CLAVE:

RUTA: MEX-002

AÑO: 2025

LUGAR	ESTACION				CLASIFICACION VEHICULAR EN PORCIENTO														COORDENADAS	
	KM	TE	SC	TDPA	M	A	B	C2	C3	T3S2	T3S3	T3S2R4	OTROS	A	B	C	K'	D	LATITUD	LONGITUD
T. C. Matamoros - Reynosa	0.00	3	1	11427	3.5	59.0	2.3	3.0	4.8	24.2	1.2	1.4	0.6	62.5	2.3	35.2	0.084	0.627	26.021152	-98.208310
T. C. Matamoros - Reynosa	0.00	3	2	11353	3.8	59.5	2.2	2.7	4.8	24.2	1.2	1.2	0.4	63.3	2.2	34.5	0.091	0.627	26.021155	-98.208399
Puente Internacional Reynosa - Pharr	3.10																			

2 CARR: Altamira - T. C. (Petrocel -Puerto Industrial Altamira)

CLAVE:

RUTA: MEX-080

AÑO: 2025

LUGAR	ESTACION				CLASIFICACION VEHICULAR EN PORCIENTO														COORDENADAS	
	KM	TE	SC	TDPA	M	A	B	C2	C3	T3S2	T3S3	T3S2R4	OTROS	A	B	C	K'	D	LATITUD	LONGITUD
Altamira	0.00	3	1	14478	9.0	84.7	0.6	2.5	1.4	0.9	0.3	0.5	0.1	93.7	0.6	5.7	0.093	0.553	22.400778	-97.918866
Altamira	0.00	3	2	13652	8.8	85.2	0.6	2.4	1.3	0.8	0.3	0.4	0.2	94.0	0.6	5.4	0.089	0.553	22.400806	-97.919251
T. C. (Petrocel -Puerto Industrial Altamira)	3.10																			

3 CARR: Cd. Valles - Cd. Victoria

CLAVE: 00509

RUTA: MEX-085

AÑO: 2025

LUGAR	ESTACION				CLASIFICACION VEHICULAR EN PORCIENTO														COORDENADAS	
	KM	TE	SC	TDPA	M	A	B	C2	C3	T3S2	T3S3	T3S2R4	OTROS	A	B	C	K'	D	LATITUD	LONGITUD
Cd. Valles	0.00	3	0	11799	5.0	86.9	1.4	4.1	0.6	1.0	0.4	0.5	0.1	91.9	1.4	6.7	0.074	0.623	22.007350	-99.004526
Lim. Edos. Term. S. L. P. Ppia. Tamps.	50.40																			
Antiguo Morelos	66.90	1	0	3240	9.1	79.5	3.5	1.8	1.5	1.9	0.6	1.8	0.3	88.6	3.5	7.9	0.072	0.573	22.550237	-99.078465
Antiguo Morelos	66.90	3	0	3849	7.9	76.5	4.5	2.6	2.0	2.7	1.4	1.7	0.7	84.4	4.5	11.1	0.083	0.519	22.565218	-99.077175
Cd. Mante	98.00	1	0	9644	10.1	79.2	1.7	3.3	1.9	1.4	0.9	1.0	0.5	89.3	1.7	9.0	0.082	0.519	22.712073	-98.988758
T. Izq. Ocampo	110.00	3	0	4728	15.5	75.8	3.4	2.4	1.4	0.7	0.3	0.4	0.1	91.3	3.4	5.3	0.074	0.571	22.838756	-99.024365
T. Izq. Gómez Farías	132.84	3	0	2077	13.2	74.3	3.8	6.4	0.9	1.0	0.1	0.2	0.1	87.5	3.8	8.7	0.099	0.507	23.030333	-99.093812
T. Izq. Llera de Canales	170.00	3	0	4438	2.1	89.4	1.6	4.6	0.7	0.6	0.5	0.4	0.1	91.5	1.6	6.9	0.090	0.616	23.310160	-99.018473
T. Der. González	172.50	3	0	2948	3.0	81.2	4.1	6.2	1.5	1.8	1.2	1.0	0.0	84.2	4.1	11.7	0.107	0.687	23.319616	-98.998095
Cd. Victoria	232.00	1	0	2723	2.6	83.6	4.3	5.4	1.9	1.3	0.7	0.1	0.1	86.2	4.3	9.5	0.105	0.614	23.659899	-99.096580

4 CARR: Cd. Valles - Tampico

CLAVE: 00138

RUTA: MEX-070

AÑO: 2025

LUGAR	ESTACION				CLASIFICACION VEHICULAR EN PORCIENTO														COORDENADAS	
	KM	TE	SC	TDPA	M	A	B	C2	C3	T3S2	T3S3	T3S2R4	OTROS	A	B	C	K'	D	LATITUD	LONGITUD
Cd. Valles	0.00	3	0	8224	4.6	80.0	1.9	6.5	3.1	1.9	0.8	1.0	0.2	84.6	1.9	13.5	0.086	0.623	21.976013	-98.958726
T. Der. Santa Elena	15.25	3	0	5519	4.2	81.3	2.1	4.8	3.4	1.8	1.2	1.0	0.2	85.5	2.1	12.4	0.085	0.662	21.961381	-98.877630
Tamuín	29.60	1	0	6417	3.5	73.7	2.3	10.1	2.6	4.3	1.8	1.1	0.6	77.2	2.3	20.5	0.091	0.680	21.997100	-98.781241
T. C. Rayón - Ent. Tamuín (Cuota)	34.40	1	0	4789	11.2	72.3	2.7	4.0	3.3	2.8	1.3	2.0	0.4	83.5	2.7	13.8	0.078	0.515	22.002356	-98.745522

TAMAULIPAS

4 CARR: Cd. Valles - Tampico

CLAVE: 00138

RUTA: MEX-070

AÑO: 2025

LUGAR	ESTACION				CLASIFICACION VEHICULAR EN PORCIENTO										COORDENADAS					
	KM	TE	SC	TDPA	M	A	B	C2	C3	T3S2	T3S3	T3S2R4	OTROS	A	B	C	K'	D	LATITUD	LONGITUD
T. C. Rayón - Ent. Tamuín (Cuota)	34.40	3	1	3206	7.5	70.8	5.4	3.0	2.0	4.9	1.9	3.6	0.9	78.3	5.4	16.3	0.081	0.502	22.010550	-98.729831
T. C. Rayón - Ent. Tamuín (Cuota)	34.40	3	2	3261	7.6	71.0	5.2	3.1	2.1	4.4	1.9	3.7	1.0	78.6	5.2	16.2	0.079	0.502	22.010608	-98.729933
Ébano	79.00	1	0	12147	8.8	72.0	2.2	3.4	3.1	4.8	1.9	3.4	0.4	80.8	2.2	17.0	0.070	0.505	22.214256	-98.391331
Ébano	79.00	3	0	6407	7.3	64.8	5.4	4.7	2.9	5.4	2.4	6.1	1.0	72.1	5.4	22.5	0.073	0.528	22.211622	-98.360211
Lim. Edos. Term. S. L. P. Ppia. Ver.	83.57																			
T. Der. Pánuco	103.00	1	0	8072	4.5	75.6	2.9	5.0	2.4	3.9	2.2	2.7	0.8	80.1	2.9	17.0	0.072	0.503	22.155739	-98.155117
T. Der. Pánuco	103.00	3	0	10893	6.9	72.6	2.9	4.2	2.6	3.7	1.7	4.5	0.9	79.5	2.9	17.6	0.084	0.500	22.159161	-98.148580
T. C. Anáhuac - El Prieto	128.40	1	1	6262	4.8	76.1	3.5	4.2	1.7	3.8	1.7	3.3	0.9	80.9	3.5	15.6	0.079	0.575	22.213459	-97.953243
T. C. Anáhuac - El Prieto	128.40	1	2	6051	4.8	76.2	3.5	4.2	1.8	3.7	1.7	3.2	0.9	81.0	3.5	15.5	0.083	0.575	22.213543	-97.953256
T. C. Anáhuac - El Prieto	128.40	3	1	9401	5.3	71.2	3.4	4.7	2.0	6.5	2.2	3.8	0.9	76.5	3.4	20.1	0.072	0.575	22.216402	-97.940722
T. C. Anáhuac - El Prieto	128.40	3	2	8098	5.5	70.3	4.2	4.4	2.1	6.4	2.3	3.9	0.9	75.8	4.2	20.0	0.073	0.575	22.216531	-97.940689
Lim. Edos. Term. Ver. Ppia. Tamps.	133.81																			
T. C. Libramiento Poniente de Tampico (Cuota)	134.41																			
Tampico	138.00	1	1	12147	6.6	69.6	2.7	7.5	2.3	4.9	1.9	3.6	0.9	76.2	2.7	21.1	0.076	0.540	22.226827	-97.894229
Tampico	138.00	1	2	11297	6.7	70.0	2.7	7.4	2.2	4.8	1.8	3.5	0.9	76.7	2.7	20.6	0.079	0.540	22.226923	-97.894255

5 CARR: Cd. Victoria - Matamoros

CLAVE: 28139

RUTA: MEX-101-180

AÑO: 2025

LUGAR	ESTACION				CLASIFICACION VEHICULAR EN PORCIENTO										COORDENADAS					
	KM	TE	SC	TDPA	M	A	B	C2	C3	T3S2	T3S3	T3S2R4	OTROS	A	B	C	K'	D	LATITUD	LONGITUD
Cd. Victoria	0.00																			
X. C. Libramiento de Cd. Victoria	5.00	3	1	10647	5.4	88.7	1.3	1.6	0.9	0.7	0.4	0.6	0.4	94.1	1.3	4.6	0.082	0.501	23.768069	-99.111553
X. C. Libramiento de Cd. Victoria	5.00	3	2	10800	5.5	88.3	1.4	1.7	1.0	0.7	0.4	0.6	0.4	93.8	1.4	4.8	0.088	0.501	23.768088	-99.111645
X. C. Ignacio Zaragoza - T. C. (Ciudad Victoria - Monterrey)	15.72	3	0	8543	2.6	70.2	4.8	3.5	1.9	9.6	2.2	4.3	0.9	72.8	4.8	22.4	0.083	0.511	23.860098	-99.047931
T. Izq. Barretal	46.50	1	0	8907	3.3	68.1	4.4	2.5	3.4	10.4	2.0	5.1	0.8	71.4	4.4	24.2	0.072	0.534	24.032413	-98.908241
T. Der. Las Juntas	80.05	1	0	7996	2.6	70.4	3.9	2.6	1.0	11.2	2.4	5.1	0.8	73.0	3.9	23.1	0.076	0.507	24.110827	-98.608278
T. C. Libramiento de Santander Jiménez	95.82	1	0	7303	5.8	63.4	3.0	3.9	1.0	14.1	1.8	6.0	1.0	69.2	3.0	27.8	0.074	0.538	24.202253	-98.495485
Santander Jiménez	97.00																			
T. C. Libramiento de Santander Jiménez	100.04	3	0	6782	4.1	68.0	3.7	2.4	1.1	11.2	2.0	6.5	1.0	72.1	3.7	24.2	0.075	0.516	24.236053	-98.477325
T. Der. Soto La Marina	129.00	3	1	3507	3.4	71.8	4.6	3.3	1.1	8.1	2.4	4.3	1.0	75.2	4.6	20.2	0.087	0.555	24.482612	-98.338631
T. Der. Soto La Marina	129.00	3	2	3282	3.7	71.4	4.3	3.6	1.1	8.1	2.4	4.4	1.0	75.1	4.3	20.6	0.081	0.555	24.482622	-98.338700
Las Norias	145.80	3	0	7315	3.3	66.8	3.6	3.3	1.2	12.0	2.2	6.5	1.1	70.1	3.6	26.3	0.092	0.537	24.627209	-98.293351
T. Libramiento de San Fernando Sur	162.60																			
San Fernando	175.00	3	0	4559	3.3	88.6	2.8	2.4	1.1	0.7	0.6	0.3	0.2	91.9	2.8	5.3	0.095	0.519	24.863166	-98.139722
T. C. Libramiento de San Fernando Norte	187.00	3	0	10542	2.0	72.1	3.3	3.6	1.1	10.7	1.7	4.9	0.6	74.1	3.3	22.6	0.077	0.519	24.949518	-98.104701

TAMAULIPAS

5 CARR: Cd. Victoria - Matamoros

CLAVE: 28139

RUTA: MEX-101-180

AÑO: 2025

LUGAR	ESTACION				CLASIFICACION VEHICULAR EN PORCIENTO										COORDENADAS					
	KM	TE	SC	TDPA	M	A	B	C2	C3	T3S2	T3S3	T3S2R4	OTROS	A	B	C	K'	D	LATITUD	LONGITUD
T. Libramiento General Francisco Villa Sur	193.60																			
T. Libramiento General Francisco Villa Norte	199.20																			
T. Izq. Reynosa	202.00	1	0	9665	2.0	66.4	3.6	6.9	1.2	12.0	1.9	5.2	0.8	68.4	3.6	28.0	0.080	0.533	25.052180	-98.070920
T. Izq. Reynosa	202.00	3	0	4517	2.2	77.8	3.4	2.9	1.1	5.1	2.2	4.1	1.2	80.0	3.4	16.6	0.088	0.503	25.078122	-98.063009
T. Der. Los Vergeles	220.00	1	0	4464	2.7	73.5	4.4	5.7	1.3	5.6	1.8	4.0	1.0	76.2	4.4	19.4	0.094	0.529	25.175014	-97.963995
T. Libramiento de San Germán Sur	223.60																			
T. Libramiento de San Germán Norte	226.90																			
Santa Teresa	233.00	1	0	4881	2.2	75.4	4.5	7.7	0.9	3.6	1.2	3.5	1.0	77.6	4.5	17.9	0.085	0.590	25.268779	-97.868205
T. Izq. Valle Hermoso	254.50	1	0	4838	2.1	79.8	3.4	4.5	0.9	4.4	1.5	2.7	0.7	81.9	3.4	14.7	0.084	0.527	25.439757	-97.822900
T. Izq. Valle Hermoso	254.50	3	0	4611	1.3	79.2	3.8	4.3	1.3	4.8	1.8	2.8	0.7	80.5	3.8	15.7	0.083	0.572	25.454975	-97.812651
T. Izq. Jarita	286.00	3	1	3045	1.2	86.2	2.6	2.7	1.1	3.1	1.0	1.5	0.6	87.4	2.6	10.0	0.085	0.583	25.667486	-97.600331
T. Izq. Jarita	286.00	3	2	3428	1.2	86.4	2.5	2.5	1.0	2.9	0.9	1.9	0.7	87.6	2.5	9.9	0.097	0.583	25.667567	-97.600394
T. C. Potrero Nuevo - Rancho El Mezquital	293.50	3	1	4424	1.6	85.7	2.2	4.5	0.9	2.4	0.7	1.5	0.5	87.3	2.2	10.5	0.094	0.553	25.717862	-97.570288
T. C. Potrero Nuevo - Rancho El Mezquital	293.50	3	2	4377	1.6	85.0	2.4	4.8	1.1	2.4	0.6	1.6	0.5	86.6	2.4	11.0	0.098	0.553	25.717464	-97.570567
Matamoros	312.00	1	1	6514	2.1	87.5	2.1	3.0	1.2	2.0	0.6	1.0	0.5	89.6	2.1	8.3	0.113	0.637	25.765196	-97.541954
Matamoros	312.00	1	2	6685	2.0	87.6	2.2	3.0	1.3	1.8	0.8	0.8	0.5	89.6	2.2	8.2	0.087	0.637	25.765246	-97.542055

6 CARR: Cd. Victoria - Soto La Marina

CLAVE: 28009

RUTA: MEX-070

AÑO: 2025

LUGAR	ESTACION				CLASIFICACION VEHICULAR EN PORCIENTO										COORDENADAS					
	KM	TE	SC	TDPA	M	A	B	C2	C3	T3S2	T3S3	T3S2R4	OTROS	A	B	C	K'	D	LATITUD	LONGITUD
Cd. Victoria	0.00	3	1	6163	4.8	86.0	1.9	2.5	1.5	1.2	0.7	1.0	0.4	90.8	1.9	7.3	0.111	0.677	23.718724	-99.070718
Cd. Victoria	0.00	3	2	5851	4.7	86.2	1.8	2.4	1.4	1.3	0.8	1.0	0.4	90.9	1.8	7.3	0.067	0.677	23.718762	-99.070713
Casas	40.00																			
Soto La Marina	116.80	1	0	5382	3.5	83.4	2.1	4.1	1.1	3.6	0.7	0.9	0.6	86.9	2.1	11.0	0.072	0.558	23.758569	-98.207385

7 CARR: Ciudad Victoria - Monterrey

CLAVE: 00462

RUTA: MEX-085

AÑO: 2025

LUGAR	ESTACION				CLASIFICACION VEHICULAR EN PORCIENTO										COORDENADAS					
	KM	TE	SC	TDPA	M	A	B	C2	C3	T3S2	T3S3	T3S2R4	OTROS	A	B	C	K'	D	LATITUD	LONGITUD
Cd. Victoria (Lateral)	0.00	3	1	1151	9.7	81.0	1.8	4.5	1.5	0.7	0.5	0.2	0.1	90.7	1.8	7.5	0.099	0.519	23.778094	-99.136541
Cd. Victoria (Central)	0.00	3	1	7201	10.3	82.8	1.6	1.9	0.8	0.8	0.3	1.4	0.1	93.1	1.6	5.3	0.085	0.519	23.777605	-99.136727
Cd. Victoria (Central)	0.00	3	2	8227	10.2	83.0	1.6	1.8	0.9	0.7	0.2	1.5	0.1	93.2	1.6	5.2	0.086	0.519	23.777624	-99.136835
Cd. Victoria (Lateral)	0.00	3	2	1220	10.0	80.8	1.7	4.4	1.2	0.8	0.7	0.3	0.1	90.8	1.7	7.5	0.095	0.519	23.778142	-99.136799
T. Der. Güemez	19.60	3	0	6212	3.2	81.9	3.2	8.2	0.8	1.4	0.5	0.7	0.1	85.1	3.2	11.7	0.101	0.673	23.915692	-99.112356

TAMAULIPAS

7 CARR: Ciudad Victoria - Monterrey

CLAVE: 00462

RUTA: MEX-085

AÑO: 2025

LUGAR	ESTACION				CLASIFICACION VEHICULAR EN PORCIENTO										COORDENADAS					
	KM	TE	SC	TDPA	M	A	B	C2	C3	T3S2	T3S3	T3S2R4	OTROS	A	B	C	K'	D	LATITUD	LONGITUD
Luz del Campesino	25.35																			
T. Izq. Santa Engracia	27.35	3	0	11126	3.2	66.2	4.8	7.4	1.6	7.2	2.2	6.5	0.9	69.4	4.8	25.8	0.106	0.673	23.997169	-99.110431
Barretal	39.00	3	0	10244	3.8	66.9	5.8	4.9	1.5	6.9	1.9	7.4	0.9	70.7	5.8	23.5	0.111	0.660	24.093674	-99.144997
T. Izq. Hidalgo y La Mesa	77.50	1	0	10331	5.3	64.0	6.0	4.4	1.7	7.0	2.5	8.1	1.0	69.3	6.0	24.7	0.095	0.506	24.244045	-99.425196
Villagrán	106.00	1	0	8908	5.6	64.0	5.8	4.0	2.9	6.5	2.3	8.1	0.8	69.6	5.8	24.6	0.081	0.560	24.463921	-99.496380
Villagrán	106.00	3	0	6653	5.6	63.8	6.1	3.7	3.1	6.5	2.2	8.0	1.0	69.4	6.1	24.5	0.082	0.623	24.481972	-99.505555
T. Izq. Villa Mainero	118.00	3	1	5098	3.2	66.8	6.0	3.4	2.1	7.1	2.5	8.0	0.9	70.0	6.0	24.0	0.131	0.703	24.581771	-99.539042
T. Izq. Villa Mainero	118.00	3	2	4903	3.1	67.2	5.7	3.2	2.0	7.3	2.5	8.1	0.9	70.3	5.7	24.0	0.091	0.703	24.581859	-99.539068
Lim. Edos. Term. Tamps. Ppia. N. L.	126.20																			
T. Libramiento de Linares Sur	152.50																			
Linares	154.00	1	0	11776	3.0	71.4	4.9	2.8	1.5	7.1	1.9	6.6	0.8	74.4	4.9	20.7	0.090	0.675	24.837574	-99.560013
Linares	154.00	3	1	7790	3.8	74.7	3.5	5.4	1.2	4.4	1.4	4.7	0.9	78.5	3.5	18.0	0.108	0.613	24.881657	-99.587019
Linares	154.00	3	2	7806	3.7	74.6	3.8	5.5	1.2	4.3	1.4	4.7	0.8	78.3	3.8	17.9	0.087	0.613	24.881543	-99.587242
T. Libramiento de Linares Norte	157.30																			
La Laja	171.00	3	1	6568	3.0	68.1	4.9	5.3	1.4	7.6	2.3	6.2	1.2	71.1	4.9	24.0	0.082	0.507	24.923020	-99.688650
La Laja	171.00	3	2	6107	2.7	68.9	4.5	5.3	1.2	7.6	2.6	6.2	1.0	71.6	4.5	23.9	0.091	0.507	24.922994	-99.688752
T. C. Libramiento de Montemorelos Sur	197.50	3	0	4015	4.8	85.7	2.8	2.3	1.7	1.4	0.7	0.4	0.2	90.5	2.8	6.7	0.087	0.600	25.127786	-99.809244
Montemorelos	205.00	3	1	13555	3.5	76.4	3.4	5.7	1.7	5.3	1.1	2.2	0.7	79.9	3.4	16.7	0.099	0.501	25.202448	-99.906717
Montemorelos	205.00	3	2	15108	3.5	76.4	3.3	5.7	1.5	5.6	1.1	2.4	0.5	79.9	3.3	16.8	0.092	0.501	25.202103	-99.906310
T. C. Libramiento de Montemorelos Norte	208.50	1	1	8278	3.3	77.9	3.6	5.4	1.4	3.6	0.8	3.4	0.6	81.2	3.6	15.2	0.086	0.627	25.191318	-99.882558
T. C. Libramiento de Montemorelos Norte	208.50	1	2	8338	3.4	77.5	3.4	5.5	1.5	3.6	0.9	3.5	0.7	80.9	3.4	15.7	0.095	0.627	25.191182	-99.882690
Allende	227.45	1	1	12383	1.6	83.5	2.0	5.6	1.5	2.7	0.7	1.8	0.6	85.1	2.0	12.9	0.095	0.615	25.252368	-99.984408
Allende	227.45	1	2	13534	1.4	83.9	2.1	5.6	1.8	2.6	0.6	1.6	0.4	85.3	2.1	12.6	0.102	0.615	25.252180	-99.984221
Allende	227.45	3	1	17314	3.1	83.6	2.6	3.2	1.7	2.8	0.7	1.8	0.5	86.7	2.6	10.7	0.095	0.548	25.295881	-100.048849
Allende	227.45	3	2	17252	3.1	83.2	2.8	3.4	1.6	3.3	0.5	1.8	0.3	86.3	2.8	10.9	0.083	0.548	25.295943	-100.049029
El Cercado	249.00	1	1	24025	2.8	86.5	1.7	2.2	1.9	2.3	0.5	1.5	0.6	89.3	1.7	9.0	0.080	0.508	25.357536	-100.094921
El Cercado	249.00	1	2	23296	2.7	86.9	1.8	2.1	1.7	2.2	0.6	1.6	0.4	89.6	1.8	8.6	0.080	0.508	25.357411	-100.095067
T. Der. Las Huertas	257.00	3	1	30108	8.3	82.9	1.5	2.1	1.1	1.3	0.5	1.7	0.6	91.2	1.5	7.3	0.129	0.549	25.456687	-100.166885
T. Der. Las Huertas	257.00	3	2	29754	8.4	82.9	1.2	2.2	1.0	1.2	0.7	1.9	0.5	91.3	1.2	7.5	0.100	0.549	25.456628	-100.167000
T. Izq. el Barro	266.00	3	1	40290	5.0	87.7	0.8	1.9	1.2	1.5	0.6	1.0	0.3	92.7	0.8	6.5	0.097	0.552	25.531656	-100.214001
T. Izq. el Barro	266.00	3	2	40388	4.9	88.2	1.0	2.0	1.1	1.3	0.5	0.8	0.2	93.1	1.0	5.9	0.078	0.552	25.531546	-100.214121
La Estanzuela	274.82	3	1	55404	5.2	83.8	1.4	2.7	0.8	1.1	0.5	3.7	0.8	89.0	1.4	9.6	0.064	0.526	25.589093	-100.259035
La Estanzuela	274.82	3	2	60180	5.4	84.8	1.2	2.6	1.0	0.8	0.3	3.4	0.5	90.2	1.2	8.6	0.063	0.526	25.588995	-100.259159
Monterrey (Baja)	287.00	1	1	18110	6.4	83.2	0.8	6.4	1.5	0.6	0.3	0.5	0.3	89.6	0.8	9.6	0.076	0.511	25.601629	-100.265757
Monterrey (Alta)	287.00	1	1	60099	3.1	88.4	1.5	1.6	1.1	1.3	0.4	2.3	0.3	91.5	1.5	7.0	0.058	0.511	25.602524	-100.266488

TAMAULIPAS

7 CARR: Ciudad Victoria - Monterrey

CLAVE: 00462

RUTA: MEX-085

AÑO: 2025

LUGAR	ESTACION				CLASIFICACION VEHICULAR EN PORCIENTO													COORDENADAS		
	KM	TE	SC	TDPA	M	A	B	C2	C3	T3S2	T3S3	T3S2R4	OTROS	A	B	C	K'	D	LATITUD	LONGITUD
Monterrey (Alta)	287.00	1	2	62324	3.2	89.0	1.7	1.5	1.0	1.1	0.2	2.1	0.2	92.2	1.7	6.1	0.066	0.511	25.602700	-100.266733
Monterrey (Baja)	287.00	1	2	17498	6.3	83.2	1.1	6.6	1.3	0.5	0.2	0.6	0.2	89.5	1.1	9.4	0.071	0.511	25.603047	-100.267107

8 CARR: Corredor Internacional Reynosa

CLAVE:

RUTA: MEX

AÑO: 2025

LUGAR	ESTACION				CLASIFICACION VEHICULAR EN PORCIENTO													COORDENADAS			
	KM	TE	SC	TDPA	M	A	B	C2	C3	T3S2	T3S3	T3S2R4	OTROS	A	B	C	K'	D	LATITUD	LONGITUD	
T. Libramiento de Reynosa Sur II	0.00																				
T. C. Matamoros - Reynosa	7.48	1	0	4044	2.4	53.5	2.1	5.0	4.1	22.9	3.4	5.6	1.0	55.9	2.1	42.0	0.083	0.579	26.001968	-98.207288	

9 CARR: Ent. El Huizache - Antigua Morelos

CLAVE: 00136

RUTA: MEX-080

AÑO: 2025

LUGAR	ESTACION				CLASIFICACION VEHICULAR EN PORCIENTO													COORDENADAS		
	KM	TE	SC	TDPA	M	A	B	C2	C3	T3S2	T3S3	T3S2R4	OTROS	A	B	C	K'	D	LATITUD	LONGITUD
T. C. San Luis Potosí - Matehuala (Ent. El Huizache)	0.00	3	0	2848	4.1	43.9	4.3	5.1	3.9	21.5	4.0	12.7	0.5	48.0	4.3	47.7	0.063	0.689	22.930791	-100.448422
T. Izq. Tula	57.83	1	0	2705	3.3	39.5	3.7	5.1	3.0	25.3	5.8	13.5	0.8	42.8	3.7	53.5	0.058	0.529	22.739037	-99.981034
Cd. del Maíz	112.00	1	0	1751	4.2	87.4	1.9	2.9	1.1	2.0	0.3	0.2	0.0	91.6	1.9	6.5	0.096	0.583	22.417212	-99.625520
El Naranjo	166.00	1	0	3308	7.7	82.7	1.4	4.4	1.1	1.7	0.5	0.3	0.2	90.4	1.4	8.2	0.073	0.523	22.517990	-99.335539
El Naranjo	166.00	3	0	4855	5.5	80.6	1.8	6.0	2.8	1.5	0.7	0.8	0.3	86.1	1.8	12.1	0.079	0.519	22.532477	-99.307317
Lim. Edos. Term. Tamps. Ppia. S. L. P.	173.00																			
Nuevo Morelos	180.00	3	0	1550	8.1	81.0	1.9	3.2	1.8	2.1	1.1	0.6	0.2	89.1	1.9	9.0	0.094	0.552	22.540917	-99.212220
Antigua Morelos	198.00	1	0	3173	15.8	73.7	1.5	2.3	1.9	1.9	1.2	1.4	0.3	89.5	1.5	9.0	0.077	0.510	22.553928	-99.090737

10 CARR: Ent. Tula - Cd. Victoria

CLAVE: 00179

RUTA: MEX-101

AÑO: 2025

LUGAR	ESTACION				CLASIFICACION VEHICULAR EN PORCIENTO													COORDENADAS		
	KM	TE	SC	TDPA	M	A	B	C2	C3	T3S2	T3S3	T3S2R4	OTROS	A	B	C	K'	D	LATITUD	LONGITUD
T. C. Antigua Morelos - El Huizache	0.00	3	0	4415	4.4	48.0	4.8	3.4	2.4	20.0	2.9	13.3	0.8	52.4	4.8	42.8	0.066	0.514	22.738096	-99.967923
Lim. Edos. Term. S. L. P. Ppia. Tamps.	2.40																			
T. Der. Tula (1º Acceso)	38.00	1	0	6026	4.0	50.2	4.8	5.3	2.8	18.2	3.1	10.6	1.0	54.2	4.8	41.0	0.072	0.525	22.978161	-99.738329
T. Der. Tula (2º Acceso)	41.95	3	0	5756	4.1	51.5	5.7	4.5	2.1	17.7	2.7	10.9	0.8	55.6	5.7	38.7	0.066	0.568	23.032159	-99.707963
Jaumave	112.68	1	0	6289	4.9	62.5	4.0	4.4	1.3	12.3	1.9	7.8	0.9	67.4	4.0	28.6	0.067	0.536	23.393546	-99.416114
Jaumave	112.68	3	0	6901	5.0	58.7	3.9	4.5	1.5	13.7	2.4	9.5	0.8	63.7	3.9	32.4	0.068	0.549	23.420521	-99.373255
T. Libramiento de Cd. Victoria	134.68																			
Cd. Victoria	180.00	1	1	4082	17.1	78.1	0.6	1.0	1.9	0.6	0.4	0.2	0.1	95.2	0.6	4.2	0.107	0.580	23.711040	-99.175876

TAMAULIPAS

10 CARR: Ent. Tula - Cd. Victoria

CLAVE: 00179

RUTA: MEX-101

AÑO: 2025

LUGAR	ESTACION				CLASIFICACION VEHICULAR EN PORCIENTO													COORDENADAS		
	KM	TE	SC	TDPA	M	A	B	C2	C3	T3S2	T3S3	T3S2R4	OTROS	A	B	C	K'	D	LATITUD	LONGITUD
Cd. Victoria	180.00	1	2	4237	17.1	78.2	0.7	0.8	1.8	0.5	0.4	0.3	0.2	95.3	0.7	4.0	0.082	0.580	23.711126	-99.175971

11 CARR: Estación Manuel - T. C. (Cd. Victoria - Soto La Marina)

CLAVE: 28294

RUTA: MEX-180

AÑO: 2025

LUGAR	ESTACION				CLASIFICACION VEHICULAR EN PORCIENTO													COORDENADAS		
	KM	TE	SC	TDPA	M	A	B	C2	C3	T3S2	T3S3	T3S2R4	OTROS	A	B	C	K'	D	LATITUD	LONGITUD
Estación Manuel	0.00	3	0	3570	4.8	75.6	5.2	3.9	2.2	5.6	1.3	1.4	0.0	80.4	5.2	14.4	0.067	0.523	22.762589	-98.309900
T. Der. Aldama	36.00	3	0	4765	4.2	85.0	2.5	3.1	1.3	2.0	0.9	0.7	0.3	89.2	2.5	8.3	0.082	0.504	22.936341	-98.077533
Esperanza	69.00	3	0	2392	5.2	74.8	4.3	3.9	1.5	7.0	1.2	1.8	0.3	80.0	4.3	15.7	0.087	0.555	23.179363	-97.952301
San José de Las Rusias	116.25	3	0	2484	2.5	78.7	5.7	3.3	1.5	5.3	1.2	1.5	0.3	81.2	5.7	13.1	0.086	0.563	23.562135	-98.042701
T. C. (Cd. Victoria - S. La Marina)	145.00	1	0	2590	2.7	80.6	3.6	4.4	1.4	4.6	1.1	1.3	0.3	83.3	3.6	13.1	0.085	0.550	23.725320	-98.217860

12 CARR: González - Llera de Canales

CLAVE: 28578

RUTA: MEX-081

AÑO: 2025

LUGAR	ESTACION				CLASIFICACION VEHICULAR EN PORCIENTO													COORDENADAS		
	KM	TE	SC	TDPA	M	A	B	C2	C3	T3S2	T3S3	T3S2R4	OTROS	A	B	C	K'	D	LATITUD	LONGITUD
González	0.00	3	0	7700	5.2	52.5	5.7	3.9	1.4	11.7	3.5	15.1	1.0	57.7	5.7	36.6	0.073	0.506	22.844992	-98.450861
Estación Ignacio Zaragoza	58.50	1	0	7139	2.8	64.6	3.5	4.4	2.0	8.4	2.3	11.0	1.0	67.4	3.5	29.1	0.084	0.604	23.183372	-98.771719
T. C. Zaragoza - Cd. Victoria	59.78																			
T. C. Cd. Valles - Cd. Victoria	89.00	1	0	2038	6.0	89.6	0.7	1.7	0.7	0.3	0.3	0.4	0.3	95.6	0.7	3.7	0.098	0.598	23.316554	-98.994016

13 CARR: Ignacio Zaragoza - T. C. (Ciudad Victoria - Monterrey)

CLAVE: 28625

RUTA: MEX-083

AÑO: 2025

LUGAR	ESTACION				CLASIFICACION VEHICULAR EN PORCIENTO													COORDENADAS		
	KM	TE	SC	TDPA	M	A	B	C2	C3	T3S2	T3S3	T3S2R4	OTROS	A	B	C	K'	D	LATITUD	LONGITUD
T. C. González - Llera de Canales	0.00	3	0	9384	4.1	63.0	5.7	4.4	1.5	7.6	3.2	9.5	1.0	67.1	5.7	27.2	0.074	0.590	23.208053	-98.787078
X. C. Cd. Victoria - Soto La Marina	63.45	3	0	9471	4.1	54.8	5.1	2.9	1.5	15.5	3.4	11.7	1.0	58.9	5.1	36.0	0.091	0.724	23.728047	-98.999264
X. C. Cd. Victoria - Matamoros	79.00	3	0	7341	3.2	61.7	5.2	2.9	1.6	10.6	3.0	11.1	0.7	64.9	5.2	29.9	0.096	0.790	23.856951	-99.056704
T. C. Ciudad Victoria - Monterrey	94.30	1	0	7305	3.8	60.9	5.8	3.5	1.2	10.1	2.9	11.1	0.7	64.7	5.8	29.5	0.098	0.799	23.949432	-99.094029

14 CARR: Las Urracas - T. C. (Matamoros - Reynosa)

CLAVE: 28029

RUTA: MEX-097

AÑO: 2025

LUGAR	ESTACION				CLASIFICACION VEHICULAR EN PORCIENTO													COORDENADAS		
	KM	TE	SC	TDPA	M	A	B	C2	C3	T3S2	T3S3	T3S2R4	OTROS	A	B	C	K'	D	LATITUD	LONGITUD
T. C. Cd. Victoria - Matamoros	0.00	3	0	5155	2.0	60.3	3.7	9.2	1.2	14.7	2.1	5.6	1.2	62.3	3.7	34.0	0.085	0.511	25.081189	-98.082936

TAMAULIPAS

14 CARR: Las Urracas - T. C. (Matamoros - Reynosa)

CLAVE: 28029

RUTA: MEX-097

AÑO: 2025

LUGAR	ESTACION				CLASIFICACION VEHICULAR EN PORCIENTO													COORDENADAS		
	KM	TE	SC	TDPA	M	A	B	C2	C3	T3S2	T3S3	T3S2R4	OTROS	A	B	C	K'	D	LATITUD	LONGITUD
La Nutria	41.00	1	0	4334	1.4	61.4	4.1	10.1	1.1	15.4	2.1	3.6	0.8	62.8	4.1	33.1	0.081	0.601	25.380767	-98.218328
Santo Domingo	91.50	1	0	7198	2.2	63.9	3.7	8.5	1.7	12.1	2.0	4.8	1.1	66.1	3.7	30.2	0.064	0.640	25.827338	-98.259487
T. C. Matamoros - Reynosa	113.25	1	1	4552	1.3	86.6	3.2	2.5	1.6	2.6	0.6	0.9	0.7	87.9	3.2	8.9	0.101	0.730	25.942185	-98.270441
T. C. Matamoros - Reynosa	113.25	1	2	4752	1.6	87.2	2.9	2.2	1.2	2.1	1.1	1.1	0.6	88.8	2.9	8.3	0.136	0.730	25.942185	-98.270479

15 CARR: Libramiento de Reynosa

CLAVE: 28008

RUTA: MEX-002

AÑO: 2025

LUGAR	ESTACION				CLASIFICACION VEHICULAR EN PORCIENTO													COORDENADAS		
	KM	TE	SC	TDPA	M	A	B	C2	C3	T3S2	T3S3	T3S2R4	OTROS	A	B	C	K'	D	LATITUD	LONGITUD
T. C. Monterrey - Reynosa	0.00	3	1	36749	2.9	86.5	1.5	2.6	1.7	2.0	0.6	1.6	0.6	89.4	1.5	9.1	0.081	0.550	26.048568	-98.351933
T. C. Monterrey - Reynosa	0.00	3	2	35270	2.6	87.5	1.2	2.7	1.5	2.2	0.5	1.4	0.4	90.1	1.2	8.7	0.070	0.550	26.048860	-98.351707
T. C. Matamoros - Reynosa	8.66	1	1	58663	3.0	85.6	1.8	3.0	2.0	2.8	0.7	0.7	0.4	88.6	1.8	9.6	0.062	0.525	26.043206	-98.297082
T. C. Matamoros - Reynosa	8.66	1	2	60920	3.2	84.7	1.6	2.9	2.2	3.0	0.8	1.1	0.5	87.9	1.6	10.5	0.061	0.525	26.043433	-98.296264

16 CARR: Libramiento de San Fernando

CLAVE:

RUTA: MEX-101-180

AÑO: 2025

LUGAR	ESTACION				CLASIFICACION VEHICULAR EN PORCIENTO													COORDENADAS		
	KM	TE	SC	TDPA	M	A	B	C2	C3	T3S2	T3S3	T3S2R4	OTROS	A	B	C	K'	D	LATITUD	LONGITUD
T. C. Cd. Victoria - Matamoros	0.00	3	0	5954	3.3	65.7	3.4	3.7	1.0	13.4	1.4	7.0	1.1	69.0	3.4	27.6	0.078	0.528	24.780254	-98.206900
X C. San Fernando - Carboneras	14.39	1	0	7873	3.7	67.8	3.8	3.8	0.9	11.2	2.1	6.0	0.7	71.5	3.8	24.7	0.089	0.516	24.821375	-98.113640
X C. San Fernando - Carboneras	14.39	3	0	6913	3.1	66.2	3.1	2.4	1.2	14.7	2.4	6.2	0.7	69.3	3.1	27.6	0.079	0.621	24.849870	-98.107934
T. C. Cd. Victoria - Matamoros	26.46	1	0	7514	3.3	67.8	3.4	3.6	0.9	12.0	1.8	6.2	1.0	71.1	3.4	25.5	0.079	0.528	24.934802	-98.108295

17 CARR: Libramiento de San Germán

CLAVE:

RUTA: MEX-101-180

AÑO: 2025

LUGAR	ESTACION				CLASIFICACION VEHICULAR EN PORCIENTO													COORDENADAS		
	KM	TE	SC	TDPA	M	A	B	C2	C3	T3S2	T3S3	T3S2R4	OTROS	A	B	C	K'	D	LATITUD	LONGITUD
T. C. Cd. Victoria - Matamoros Sur	0.00	3	0	4518	2.2	75.4	3.7	5.4	1.0	5.0	2.4	4.1	0.8	77.6	3.7	18.7	0.090	0.539	25.209180	-97.922833
T. C. Cd. Victoria - Matamoros Norte	4.50																			

18 CARR: Libramiento de Santander Jiménez

CLAVE:

RUTA: MEX-101

AÑO: 2025

LUGAR	ESTACION				CLASIFICACION VEHICULAR EN PORCIENTO													COORDENADAS		
	KM	TE	SC	TDPA	M	A	B	C2	C3	T3S2	T3S3	T3S2R4	OTROS	A	B	C	K'	D	LATITUD	LONGITUD
T. C. Cd. Victoria - Matamoros Sur	0.00	3	0	5512	1.3	63.4	1.8	7.5	1.0	14.5	2.4	7.1	1.0	64.7	1.8	33.5	0.094	0.521	24.214604	-98.494410

TAMAULIPAS

18 CARR: Libramiento de Santander Jiménez

CLAVE:

RUTA: MEX-101

AÑO: 2025

LUGAR	ESTACION				CLASIFICACION VEHICULAR EN PORCIENTO													COORDENADAS		
	KM	TE	SC	TDPA	M	A	B	C2	C3	T3S2	T3S3	T3S2R4	OTROS	A	B	C	K'	D	LATITUD	LONGITUD
X. C. Santander - Jiménez	1.70	3	0	6120	1.6	69.8	2.3	4.7	1.1	12.2	1.8	5.6	0.9	71.4	2.3	26.3	0.090	0.535	24.219942	-98.494327
T. C. Cd. Victoria - Matamoros Norte	5.00																			

19 CARR: Libramiento Estación Manuel - González

CLAVE: 28002

RUTA: MEX-081

AÑO: 2025

LUGAR	ESTACION				CLASIFICACION VEHICULAR EN PORCIENTO													COORDENADAS		
	KM	TE	SC	TDPA	M	A	B	C2	C3	T3S2	T3S3	T3S2R4	OTROS	A	B	C	K'	D	LATITUD	LONGITUD
T. C. Tampico - Cd. Mante (Sur)	0.00	3	0	7887	5.5	57.8	5.2	4.1	2.1	10.5	3.1	10.9	0.8	63.3	5.2	31.5	0.071	0.604	22.717429	-98.288005
T. C. Tampico - Cd. Mante (Norte)	24.80	1	0	9502	4.5	60.4	5.5	3.4	1.6	9.5	3.1	11.1	0.9	64.9	5.5	29.6	0.082	0.636	22.844508	-98.438937

20 CARR: Libramiento General Francisco Villa

CLAVE:

RUTA: MEX-101-180

AÑO: 2025

LUGAR	ESTACION				CLASIFICACION VEHICULAR EN PORCIENTO													COORDENADAS		
	KM	TE	SC	TDPA	M	A	B	C2	C3	T3S2	T3S3	T3S2R4	OTROS	A	B	C	K'	D	LATITUD	LONGITUD
T. C. Cd. Victoria - Matamoros (Sur)	0.00	3	0	8730	2.4	68.4	3.2	6.4	1.1	10.2	1.7	5.6	1.0	70.8	3.2	26.0	0.091	0.531	25.005788	-98.085143
T. C. Cd. Victoria - Matamoros (Norte)	6.40	1	0	9585	2.1	70.4	4.5	2.9	1.1	11.0	2.4	4.6	1.0	72.5	4.5	23.0	0.081	0.575	25.045020	-98.075735

21 CARR: Matamoros - Playa Lauro Villar

CLAVE: 28078

RUTA: MEX-002

AÑO: 2025

LUGAR	ESTACION				CLASIFICACION VEHICULAR EN PORCIENTO													COORDENADAS		
	KM	TE	SC	TDPA	M	A	B	C2	C3	T3S2	T3S3	T3S2R4	OTROS	A	B	C	K'	D	LATITUD	LONGITUD
Matamoros	0.00	3	1	15158	3.2	90.6	2.0	1.0	1.2	1.1	0.3	0.4	0.2	93.8	2.0	4.2	0.174	0.717	25.837012	-97.434938
Matamoros	0.00	3	2	16549	2.9	91.0	1.7	1.0	1.3	1.2	0.3	0.4	0.2	93.9	1.7	4.4	0.079	0.717	25.837103	-97.434914
Playa Lauro Villar	37.00																			

22 CARR: Matamoros - Reynosa

CLAVE: 28077

RUTA: MEX-002

AÑO: 2025

LUGAR	ESTACION				CLASIFICACION VEHICULAR EN PORCIENTO													COORDENADAS		
	KM	TE	SC	TDPA	M	A	B	C2	C3	T3S2	T3S3	T3S2R4	OTROS	A	B	C	K'	D	LATITUD	LONGITUD
Matamoros	0.00	3	0	13943	2.0	82.5	3.8	3.0	2.1	4.4	1.1	0.7	0.4	84.5	3.8	11.7	0.092	0.569	25.923748	-97.587555
T. Izq. Libramiento Emilio Portes Gil	7.20	1	1	7436	1.5	81.6	2.9	5.8	2.3	4.0	0.6	1.0	0.3	83.1	2.9	14.0	0.103	0.516	25.913102	-97.563540
T. Izq. Libramiento Emilio Portes Gil	7.20	1	2	7188	1.7	82.2	2.7	6.0	2.1	3.8	0.5	0.6	0.4	83.9	2.7	13.4	0.085	0.516	25.912931	-97.563402
T. C. Matamoros - Reynosa (Cuota)	26.50																			
Empalme	38.00	1	0	8119	4.0	76.9	2.5	6.5	2.9	3.7	1.3	1.5	0.7	80.9	2.5	16.6	0.080	0.535	25.922522	-97.785478
T. Der. Nuevo Progreso	57.00	1	0	5515	2.2	82.4	2.2	4.4	1.9	3.2	1.6	1.4	0.7	84.6	2.2	13.2	0.087	0.588	25.945282	-97.955127

TAMAULIPAS

22 CARR: Matamoros - Reynosa

CLAVE: 28077

RUTA: MEX-002

AÑO: 2025

LUGAR	ESTACION				CLASIFICACION VEHICULAR EN PORCIENTO													COORDENADAS		
	KM	TE	SC	TDPA	M	A	B	C2	C3	T3S2	T3S3	T3S2R4	OTROS	A	B	C	K'	D	LATITUD	LONGITUD
Río Bravo	67.00	1	0	7178	2.7	84.1	2.0	3.7	1.9	2.4	1.5	1.2	0.5	86.8	2.0	11.2	0.081	0.567	25.969699	-98.037478
Río Bravo	67.00	3	1	10051	4.2	84.3	3.2	3.0	2.0	2.2	0.4	0.6	0.1	88.5	3.2	8.3	0.097	0.678	25.997494	-98.134517
Río Bravo	67.00	3	2	9467	3.7	85.1	3.0	3.1	1.9	2.1	0.3	0.7	0.1	88.8	3.0	8.2	0.117	0.678	25.997308	-98.134666
X. C. Corredor Internacional Reynosa	81.00	1	1	18186	2.6	82.3	2.8	3.4	2.9	4.4	0.6	0.7	0.3	84.9	2.8	12.3	0.087	0.554	26.013300	-98.199374
X. C. Corredor Internacional Reynosa	81.00	1	2	17924	2.4	82.8	2.8	3.2	2.7	4.4	0.5	1.0	0.2	85.2	2.8	12.0	0.094	0.554	26.013151	-98.199417
T. Izq. Aeropuerto	85.65	3	1	27975	6.3	79.0	2.6	3.8	2.2	2.5	0.5	2.3	0.8	85.3	2.6	12.1	0.097	0.627	26.020406	-98.228662
T. Izq. Aeropuerto	85.65	3	2	29547	6.5	79.4	2.7	3.4	2.1	2.2	0.6	2.5	0.6	85.9	2.7	11.4	0.107	0.627	26.020232	-98.228760
Reynosa	98.00	1	1	53083	3.4	85.5	2.0	2.6	1.9	2.4	0.3	1.4	0.5	88.9	2.0	9.1	0.061	0.524	26.035796	-98.273546
Reynosa	98.00	1	2	52337	3.3	85.6	1.7	2.8	2.3	2.2	0.5	1.2	0.4	88.9	1.7	9.4	0.057	0.524	26.035694	-98.273769

23 CARR: Monterrey - Mier

CLAVE: 00127

RUTA: MEX-054

AÑO: 2025

LUGAR	ESTACION				CLASIFICACION VEHICULAR EN PORCIENTO													COORDENADAS		
	KM	TE	SC	TDPA	M	A	B	C2	C3	T3S2	T3S3	T3S2R4	OTROS	A	B	C	K'	D	LATITUD	LONGITUD
Monterrey	0.00																			
Apodaca	19.12	1	1	73870	4.3	86.9	1.0	3.4	1.0	1.8	0.4	0.9	0.3	91.2	1.0	7.8	0.056	0.540	25.750522	-100.200017
Apodaca	19.12	1	2	77601	4.2	87.2	1.0	3.4	1.2	1.5	0.5	0.7	0.3	91.4	1.0	7.6	0.066	0.540	25.750885	-100.200009
X. C. Libramiento Noroeste de Monterrey	21.30	3	1	46538	3.8	82.0	1.7	4.2	1.4	3.7	1.2	1.7	0.3	85.8	1.7	12.5	0.077	0.534	25.784569	-100.160133
X. C. Libramiento Noroeste de Monterrey	21.30	3	2	48348	4.1	81.6	1.9	4.1	1.5	3.5	1.3	1.5	0.5	85.7	1.9	12.4	0.062	0.534	25.784687	-100.160370
X. C. Zacatecas - Pesquería	28.15	1	1	22996	2.7	77.0	2.1	9.6	2.1	2.8	1.4	1.6	0.7	79.7	2.1	18.2	0.077	0.529	25.795066	-100.115797
X. C. Zacatecas - Pesquería	28.15	1	2	23024	2.8	77.4	2.3	9.5	2.1	2.7	1.3	1.4	0.5	80.2	2.3	17.5	0.067	0.529	25.795150	-100.115898
X. C. Zacatecas - Pesquería	28.15	3	0	10510	2.6	78.2	2.4	5.8	2.7	3.5	1.9	2.1	0.8	80.8	2.4	16.8	0.098	0.585	25.808192	-100.088540
X. C. Hacienda Guadalupe - Higueras	38.10	1	0	11355	2.9	79.2	2.3	5.9	1.9	3.8	1.2	2.1	0.7	82.1	2.3	15.6	0.077	0.556	25.846080	-100.033386
X. C. Hacienda Guadalupe - Higueras	38.10	3	0	5290	3.1	74.5	1.5	9.3	1.3	3.6	1.4	4.5	0.8	77.6	1.5	20.9	0.081	0.558	25.854126	-100.015139
Dr. González	47.60	1	0	2232	2.6	88.6	0.9	4.0	1.2	1.8	0.5	0.3	0.1	91.2	0.9	7.9	0.086	0.539	25.851298	-99.966293
Dr. González	47.60	3	0	494	9.1	75.3	4.2	9.1	0.8	0.8	0.2	0.4	0.1	84.4	4.2	11.4	0.111	0.600	25.866507	-99.927754
T. Der. Empalme Los Ramones	74.10	1	0	2964	3.7	72.4	2.2	3.5	1.2	5.6	2.2	8.3	0.9	76.1	2.2	21.7	0.092	0.662	25.922586	-99.722211
Cerralvo	95.95	1	0	4449	3.3	75.8	1.6	4.6	1.4	4.1	1.5	7.0	0.7	79.1	1.6	19.3	0.088	0.562	26.065199	-99.626511
Gral. Treviño	115.80	3	0	1772	3.4	65.1	2.9	5.8	1.4	6.2	2.1	12.6	0.5	68.5	2.9	28.6	0.111	0.645	26.232186	-99.470432
Lim. Edos. Term. N. L. Ppia. Tamps.	131.80																			
Mier	156.21	1	0	2848	1.6	74.6	1.8	2.7	1.7	6.4	1.7	9.2	0.3	76.2	1.8	22.0	0.097	0.564	26.425110	-99.166212

TAMAULIPAS

24 CARR: Monterrey - Nuevo Laredo (Libre)

CLAVE: 00463

RUTA: MEX-085

AÑO: 2025

LUGAR	ESTACION				CLASIFICACION VEHICULAR EN PORCIENTO										COORDENADAS					
	KM	TE	SC	TDPA	M	A	B	C2	C3	T3S2	T3S3	T3S2R4	OTROS	A	B	C	K'	D	LATITUD	LONGITUD
Monterrey	0.00																			
T. Izq. Gral. Escobedo (Central)	12.10	3	1	45383	3.4	88.5	1.4	3.2	0.7	1.7	0.4	0.5	0.2	91.9	1.4	6.7	0.067	0.547	25.800598	-100.277105
T. Izq. Gral. Escobedo (Lateral)	12.10	3	1	18400	5.1	83.0	1.8	6.3	1.3	1.3	0.4	0.6	0.2	88.1	1.8	10.1	0.082	0.547	25.800568	-100.277028
T. Izq. Gral. Escobedo (Lateral)	12.10	3	2	19535	5.1	84.4	1.5	6.1	1.2	0.9	0.3	0.4	0.1	89.5	1.5	9.0	0.067	0.547	25.800690	-100.277300
T. Izq. Gral. Escobedo (Central)	12.10	3	2	48653	3.3	88.2	1.2	3.5	0.9	1.9	0.4	0.5	0.1	91.5	1.2	7.3	0.076	0.547	25.800662	-100.277202
X. C. Libramiento Noroeste de Monterrey (Central)	16.00	1	1	42502	2.7	86.9	1.3	3.4	1.3	2.6	0.8	0.7	0.3	89.6	1.3	9.1	0.076	0.542	25.820434	-100.265036
X. C. Libramiento Noroeste de Monterrey (Lateral)	16.00	1	1	9517	1.5	77.3	2.5	11.4	2.3	3.4	0.8	0.5	0.3	78.8	2.5	18.7	0.081	0.542	25.820393	-100.264950
X. C. Libramiento Noroeste de Monterrey (Central)	16.00	1	2	41655	2.5	87.6	1.2	3.4	1.3	2.5	0.7	0.6	0.2	90.1	1.2	8.7	0.075	0.542	25.820532	-100.265118
X. C. Libramiento Noroeste de Monterrey (Lateral)	16.00	1	2	8233	1.7	77.3	2.5	10.8	2.5	3.8	0.8	0.4	0.2	79.0	2.5	18.5	0.101	0.542	25.820564	-100.265204
X. C. Libramiento Noroeste de Monterrey	16.00	3	1	56466	3.2	74.6	2.1	5.6	3.3	8.5	1.1	1.1	0.5	77.8	2.1	20.1	0.080	0.569	25.835529	-100.254490
X. C. Libramiento Noroeste de Monterrey	16.00	3	2	55253	3.0	74.8	1.8	5.9	3.2	8.6	1.0	1.3	0.4	77.8	1.8	20.4	0.085	0.569	25.836104	-100.254236
X. C. Anillo Periférico de Monterrey (Cuota)	17.40																			
X. C. Santa Rosa - Salinas Victoria	20.19	3	1	43511	4.3	66.6	2.8	5.9	2.7	14.4	1.0	1.9	0.4	70.9	2.8	26.3	0.082	0.608	25.862859	-100.235355
X. C. Santa Rosa - Salinas Victoria	20.19	3	2	43441	4.7	65.3	3.0	6.2	2.6	14.4	1.2	2.1	0.5	70.0	3.0	27.0	0.068	0.608	25.858291	-100.238759
T. C. Monterrey - Nuevo Laredo (Cuota)	23.99																			
Ciénega de Flores	32.00	1	0	27171	4.2	76.9	2.9	6.6	1.3	7.2	0.3	0.4	0.2	81.1	2.9	16.0	0.070	0.511	25.942263	-100.178513
T. Der. Agualeguas	78.23	3	0	6584	2.6	49.2	2.8	6.4	2.5	34.4	1.0	1.0	0.1	51.8	2.8	45.4	0.077	0.589	26.335656	-100.111693
Sabinas Hidalgo	98.90	3	0	5116	2.5	45.1	4.1	7.7	2.6	34.8	1.4	1.6	0.2	47.6	4.1	48.3	0.086	0.656	26.532715	-100.150836
Vallecillos	124.40	3	0	4199	3.0	36.9	3.3	8.2	2.4	42.1	1.6	2.1	0.4	39.9	3.3	56.8	0.070	0.680	26.663281	-99.980298
T. Izq. Anáhuac	156.80	1	0	5036	3.1	43.7	3.9	6.9	3.5	36.0	1.5	1.2	0.2	46.8	3.9	49.3	0.057	0.594	26.875090	-99.832416
T. Izq. Anáhuac	156.80	3	1	8316	2.2	35.9	4.9	6.6	2.9	44.5	1.1	1.5	0.4	38.1	4.9	57.0	0.074	0.535	26.903847	-99.809360
T. Izq. Anáhuac	156.80	3	2	8534	2.0	35.6	5.0	6.4	3.0	44.6	1.3	1.7	0.4	37.6	5.0	57.4	0.064	0.535	26.903548	-99.809881
Lim. Edos. Term. N. L. Ppia. Tamps.	184.56																			
T. Der. Mier	205.90	1	1	11103	1.7	38.0	4.2	4.2	2.7	46.0	0.8	1.9	0.5	39.7	4.2	56.1	0.087	0.659	27.288843	-99.604889
T. Der. Mier	205.90	1	2	11996	1.6	37.4	4.2	4.4	3.0	46.0	0.9	1.9	0.6	39.0	4.2	56.8	0.065	0.659	27.289045	-99.604940
T. Der. Mier	205.90	3	1	8137	0.8	44.6	4.5	9.3	5.5	33.1	0.9	1.0	0.3	45.4	4.5	50.1	0.075	0.546	27.308031	-99.594639
T. Der. Mier	205.90	3	2	8145	0.9	44.9	4.3	9.2	5.4	33.1	0.9	1.0	0.3	45.8	4.3	49.9	0.078	0.546	27.308415	-99.594595
Nuevo Laredo	228.00	1	1	12856	1.0	64.9	1.6	7.5	4.3	18.2	0.8	1.3	0.4	65.9	1.6	32.5	0.058	0.504	27.375317	-99.558679
Nuevo Laredo	228.00	1	2	13251	1.2	64.2	1.8	7.2	4.6	18.0	1.0	1.5	0.5	65.4	1.8	32.8	0.053	0.504	27.375375	-99.558834

25 CARR: Monterrey - Reynosa (Libre)

CLAVE: 00088

RUTA: MEX-040

AÑO: 2025

LUGAR	ESTACION				CLASIFICACION VEHICULAR EN PORCIENTO										COORDENADAS					
	KM	TE	SC	TDPA	M	A	B	C2	C3	T3S2	T3S3	T3S2R4	OTROS	A	B	C	K'	D	LATITUD	LONGITUD
T. C. Monterrey - Mier	0.00																			

TAMAULIPAS

25 CARR: Monterrey - Reynosa (Libre)

CLAVE: 00088

RUTA: MEX-040

AÑO: 2025

LUGAR	ESTACION				CLASIFICACION VEHICULAR EN PORCIENTO										COORDENADAS					
	KM	TE	SC	TDPA	M	A	B	C2	C3	T3S2	T3S3	T3S2R4	OTROS	A	B	C	K'	D	LATITUD	LONGITUD
Villa Juárez	19.10	1	1	28546	4.8	84.9	1.2	5.2	1.1	1.0	0.6	0.8	0.4	89.7	1.2	9.1	0.070	0.534	25.652030	-100.108453
Villa Juárez	19.10	1	2	26458	4.7	84.1	1.4	5.5	1.1	1.1	0.7	0.9	0.5	88.8	1.4	9.8	0.061	0.534	25.652146	-100.108427
Villa Juárez	19.10	3	1	19686	7.2	81.3	1.3	4.9	1.6	1.2	0.4	1.5	0.6	88.5	1.3	10.2	0.075	0.573	25.636655	-100.083550
Villa Juárez	19.10	3	2	18224	7.1	82.2	1.2	4.5	1.5	1.1	0.5	1.3	0.6	89.3	1.2	9.5	0.068	0.573	25.636800	-100.083563
Puente Cadereyta	30.50	2	1	3364	3.1	78.6	0.5	5.3	3.8	4.2	1.2	2.1	1.2	81.7	0.5	17.8	0.091	0.500	25.601114	-100.005696
Puente Cadereyta	30.50	2	2	3364	3.1	78.6	0.5	5.3	3.8	4.2	1.2	2.1	1.2	81.7	0.5	17.8	0.091	0.500	25.601114	-100.005696
T. C. Monterrey - Cadereyta (Cuota)	31.50																			
T. C. Cadereyta - Reynosa (Cuota)	32.80																			
Refinería de Cadereyta	33.00	3	0	7853	3.4	81.8	1.5	3.5	1.6	4.8	1.5	1.4	0.5	85.2	1.5	13.3	0.083	0.529	25.595023	-99.923768
T. Izq. Los Ramones	68.78	3	0	3326	1.5	77.4	1.8	5.8	1.8	7.3	2.7	1.5	0.2	78.9	1.8	19.3	0.091	0.525	25.620379	-99.626308
China	114.10																			
Gral. Bravo	125.00	1	0	8656	1.7	78.7	1.3	5.8	1.5	6.7	2.3	1.6	0.4	80.4	1.3	18.3	0.080	0.564	25.774772	-99.190228
T. C. Cadereyta - Reynosa (Cuota)	178.00																			
Lim. Edos. Term. N. L. Ppia. Tamps.	192.00																			
T. Izq. Díaz Ordáz	192.55	1	1	5196	2.3	63.3	3.6	4.9	2.1	15.7	3.3	3.9	0.9	65.6	3.6	30.8	0.098	0.534	25.967499	-98.594053
T. Izq. Díaz Ordáz	192.55	1	2	5517	2.2	64.6	3.6	4.7	2.0	14.8	3.2	4.0	0.9	66.8	3.6	29.6	0.104	0.534	25.968054	-98.593935
T. Der. Libramiento de Reynosa Sur II	206.33	1	1	6094	2.4	67.1	3.7	4.8	1.9	12.6	3.0	3.7	0.8	69.5	3.7	26.8	0.091	0.514	26.016520	-98.467463
T. Der. Libramiento de Reynosa Sur II	206.33	1	2	6702	2.5	66.1	3.7	4.9	2.1	12.8	3.1	3.9	0.9	68.6	3.7	27.7	0.091	0.514	26.017067	-98.467414
Reynosa	225.00	1	1	24557	2.0	84.4	2.0	4.6	1.3	3.9	0.7	0.9	0.2	86.4	2.0	11.6	0.083	0.556	26.042119	-98.402212
Reynosa	225.00	1	2	23338	2.4	82.5	2.0	5.1	1.6	4.1	0.9	1.2	0.2	84.9	2.0	13.1	0.090	0.556	26.042589	-98.401950

26 CARR: Nuevo Laredo - Piedras Negras

CLAVE: 00503

RUTA: MEX-002

AÑO: 2025

LUGAR	ESTACION				CLASIFICACION VEHICULAR EN PORCIENTO										COORDENADAS					
	KM	TE	SC	TDPA	M	A	B	C2	C3	T3S2	T3S3	T3S2R4	OTROS	A	B	C	K'	D	LATITUD	LONGITUD
Nuevo Laredo	0.00	3	1	11393	2.6	47.4	2.0	5.4	16.3	24.6	0.6	0.8	0.3	50.0	2.0	48.0	0.104	0.583	27.549943	-99.579595
Nuevo Laredo	0.00	3	2	12175	2.4	48.2	2.2	5.2	16.0	24.4	0.5	0.7	0.4	50.6	2.2	47.2	0.095	0.583	27.549949	-99.579757
T. Izq. Libramiento de Nuevo Laredo	13.00	3	1	5181	7.4	44.4	1.6	5.4	13.1	24.7	1.1	1.5	0.8	51.8	1.6	46.6	0.097	0.650	27.572755	-99.603986
T. Izq. Libramiento de Nuevo Laredo	13.00	3	2	5990	7.7	44.2	1.5	5.3	12.9	24.6	1.3	1.5	1.0	51.9	1.5	46.6	0.103	0.650	27.572661	-99.604046
Lim. Edos. Term. N. L. Ppia. Tamps.	32.50																			
T. C. Monclova - Colombia	36.18	1	0	2838	2.1	64.8	1.6	8.5	3.2	15.6	1.8	2.0	0.4	66.9	1.6	31.5	0.097	0.514	27.688676	-99.778445
Lim. Edos. Term. Coah. Ppia. N. L.	46.18																			
Guerrero	127.00	1	0	900	2.9	56.8	3.5	5.8	3.5	17.1	1.1	8.6	0.7	59.7	3.5	36.8	0.100	0.600	28.307335	-100.364177
T. Izq. Villa Unión	131.58	1	0	1093	3.9	54.0	2.6	9.8	3.7	16.4	1.4	7.2	1.0	57.9	2.6	39.5	0.123	0.582	28.332963	-100.388549
T. Izq. Villa Unión	131.58	3	0	1139	2.7	61.6	2.5	5.6	4.2	14.6	0.8	7.1	0.9	64.3	2.5	33.2	0.102	0.612	28.344494	-100.392054

TAMAULIPAS

26 CARR: Nuevo Laredo - Piedras Negras

CLAVE: 00503

RUTA: MEX-002

AÑO: 2025

LUGAR	ESTACION				CLASIFICACION VEHICULAR EN PORCIENTO													COORDENADAS		
	KM	TE	SC	TDPA	M	A	B	C2	C3	T3S2	T3S3	T3S2R4	OTROS	A	B	C	K'	D	LATITUD	LONGITUD
El Saucito	151.10	1	0	1255	1.3	63.4	3.9	6.0	4.4	12.2	0.8	6.8	1.2	64.7	3.9	31.4	0.098	0.642	28.501897	-100.467312
T. C. Monclova - Piedras Negras	169.30	1	1	6151	2.5	84.9	1.5	3.7	4.0	2.4	0.6	0.3	0.1	87.4	1.5	11.1	0.080	0.565	28.639631	-100.551887
T. C. Monclova - Piedras Negras	169.30	1	2	5812	2.5	85.4	1.5	3.8	3.5	2.2	0.6	0.4	0.1	87.9	1.5	10.6	0.070	0.565	28.639572	-100.551995

27 CARR: Paras - Nueva Ciudad Guerrero

CLAVE: 00476

RUTA: MEX-030

AÑO: 2025

LUGAR	ESTACION				CLASIFICACION VEHICULAR EN PORCIENTO													COORDENADAS		
	KM	TE	SC	TDPA	M	A	B	C2	C3	T3S2	T3S3	T3S2R4	OTROS	A	B	C	K'	D	LATITUD	LONGITUD
Paras	0.00	3	0	424	0.6	67.4	1.1	23.0	1.3	2.0	2.1	2.5	0.0	68.0	1.1	30.9	0.101	0.651	26.502014	-99.516143
Lim. Edos. Term. N. L. Ppia. Tamps.	13.10																			
T. C. Reynosa - (T. C. Monterrey - Nuevo Laredo)	32.00	1	0	455	0.0	75.1	1.1	14.9	1.1	1.7	2.0	4.1	0.0	75.1	1.1	23.8	0.097	0.818	26.554998	-99.244292

28 CARR: Petrocel - Puerto Industrial Altamira

CLAVE:

RUTA: MEX-080

AÑO: 2025

LUGAR	ESTACION				CLASIFICACION VEHICULAR EN PORCIENTO													COORDENADAS		
	KM	TE	SC	TDPA	M	A	B	C2	C3	T3S2	T3S3	T3S2R4	OTROS	A	B	C	K'	D	LATITUD	LONGITUD
Petrocel	0.00	3	1	15948	5.6	77.0	1.6	3.9	2.6	3.8	1.4	3.3	0.8	82.6	1.6	15.8	0.108	0.579	22.383396	-97.898900
Petrocel	0.00	3	2	14727	5.6	77.0	1.6	3.9	2.6	3.7	1.4	3.3	0.9	82.6	1.6	15.8	0.107	0.579	22.383495	-97.899026
T. Izq. Altamira	3.80	3	1	12868	8.6	64.0	1.9	5.4	3.8	6.8	2.0	6.0	1.5	72.6	1.9	25.5	0.127	0.673	22.412611	-97.887182
T. Izq. Altamira	3.80	3	2	12624	8.4	64.5	1.8	5.6	3.8	6.5	2.2	5.8	1.4	72.9	1.8	25.3	0.118	0.673	22.412651	-97.887276
Puerto Industrial Altamira	10.60																			

29 CARR: Ramal a Puente Tampico

CLAVE: 28020

RUTA: MEX-180

AÑO: 2025

LUGAR	ESTACION				CLASIFICACION VEHICULAR EN PORCIENTO													COORDENADAS		
	KM	TE	SC	TDPA	M	A	B	C2	C3	T3S2	T3S3	T3S2R4	OTROS	A	B	C	K'	D	LATITUD	LONGITUD
T. C. Tuxpam - Tampico	186.00	3	1	5436	4.3	70.9	5.0	6.9	2.1	5.1	1.7	3.1	0.9	75.2	5.0	19.8	0.117	0.546	22.184475	-97.825498
T. C. Tuxpam - Tampico	186.00	3	2	5365	6.0	69.3	5.2	6.8	2.0	5.1	1.4	3.3	0.9	75.3	5.2	19.5	0.110	0.546	22.184391	-97.825391
Lim. Edos. Term. Ver. Ppia. Tamps.	193.12																			
Puente Tampico	193.12	1	1	6350	2.7	75.1	5.4	7.1	2.3	4.8	1.6	0.6	0.4	77.8	5.4	16.8	0.103	0.580	22.221675	-97.827184
Puente Tampico	193.12	1	2	6436	3.0	75.3	5.2	6.7	2.2	5.0	1.6	0.6	0.4	78.3	5.2	16.5	0.093	0.580	22.221617	-97.827244
Tampico	194.36																			

TAMAULIPAS

30 CARR: Ramal de Acceso a Puente Anzaldúas

CLAVE: 28619

RUTA: MEX

AÑO: 2025

LUGAR	ESTACION				CLASIFICACION VEHICULAR EN PORCIENTO													COORDENADAS		
	KM	TE	SC	TDPA	M	A	B	C2	C3	T3S2	T3S3	T3S2R4	OTROS	A	B	C	K'	D	LATITUD	LONGITUD
T. C. Monterrey - Reynosa	0.00	3	1	7965	1.6	87.8	1.0	2.9	2.3	2.2	0.8	1.0	0.4	89.4	1.0	9.6	0.099	0.660	26.060340	-98.372571
T. C. Monterrey - Reynosa	0.00	3	2	8423	1.7	87.6	1.0	3.0	2.3	2.2	0.8	1.0	0.4	89.3	1.0	9.7	0.109	0.660	26.060346	-98.372661
Puente Anzaldúas	6.20																			

31 CARR: Ramal de Acceso al Puente Internacional Laredo III

CLAVE:

RUTA: MEX

AÑO: 2025

LUGAR	ESTACION				CLASIFICACION VEHICULAR EN PORCIENTO													COORDENADAS		
	KM	TE	SC	TDPA	M	A	B	C2	C3	T3S2	T3S3	T3S2R4	OTROS	A	B	C	K'	D	LATITUD	LONGITUD
T. C. Nuevo Laredo - Piedras Negras	0.00																			
Plaza de Cobro Puente Internacional Nuevo Laredo III	5.20	2	0	6104	1.4	0.1	16.9	0.2	81.2	0.0	0.0	0.0	0.2	1.5	16.9	81.6	0.090	0.500	27.595078	-99.541522

32 CARR: Reynosa - Nuevo Laredo

CLAVE: 28076

RUTA: MEX-002

AÑO: 2025

LUGAR	ESTACION				CLASIFICACION VEHICULAR EN PORCIENTO													COORDENADAS		
	KM	TE	SC	TDPA	M	A	B	C2	C3	T3S2	T3S3	T3S2R4	OTROS	A	B	C	K'	D	LATITUD	LONGITUD
Reynosa	0.00	3	1	3761	1.3	85.5	3.0	5.0	1.3	1.3	0.5	1.6	0.5	86.8	3.0	10.2	0.082	0.517	26.151644	-98.361483
Reynosa	0.00	3	2	3415	1.4	85.9	2.8	4.8	1.2	1.3	0.6	1.5	0.5	87.3	2.8	9.9	0.101	0.517	26.151383	-98.360073
X. C. Los Dos Estados - Gustavo Díaz Ordáz	35.68	3	0	6839	1.7	84.3	1.3	5.8	1.4	2.2	1.3	1.4	0.6	86.0	1.3	12.7	0.086	0.501	26.218173	-98.616982
Cd. Camargo	63.40	3	0	4429	1.7	76.9	1.4	6.7	1.6	3.4	1.6	5.8	0.9	78.6	1.4	20.0	0.088	0.573	26.333552	-98.850550
Los Guerra	92.77	3	0	2938	2.1	72.6	2.0	4.2	1.5	6.0	2.1	8.7	0.8	74.7	2.0	23.3	0.100	0.554	26.393323	-99.102629
Mier	102.35	3	0	1398	1.0	82.7	1.5	3.0	2.2	3.7	2.2	3.0	0.7	83.7	1.5	14.8	0.096	0.590	26.462496	-99.157466
T. Der. Nueva Cd. Guerrero (2º Acceso)	122.67	3	0	933	1.2	75.5	1.6	6.7	3.1	5.9	1.4	3.7	0.9	76.7	1.6	21.7	0.098	0.604	26.557896	-99.244476
T. C. Monterrey - Nuevo Laredo	221.08	1	0	893	2.7	65.9	1.8	10.2	5.3	6.7	1.0	5.9	0.5	68.6	1.8	29.6	0.125	0.527	27.298950	-99.589400

33 CARR: Soto La Marina - La Coma

CLAVE: 28052

RUTA: MEX-180

AÑO: 2025

LUGAR	ESTACION				CLASIFICACION VEHICULAR EN PORCIENTO													COORDENADAS		
	KM	TE	SC	TDPA	M	A	B	C2	C3	T3S2	T3S3	T3S2R4	OTROS	A	B	C	K'	D	LATITUD	LONGITUD
Soto La Marina	150.00	3	0	2630	5.1	76.0	4.0	6.4	0.9	4.6	1.2	1.4	0.4	81.1	4.0	14.9	0.078	0.515	23.783234	-98.196800
La Coma	232.23	1	0	1131	0.8	72.2	4.7	9.9	1.2	6.2	2.5	2.3	0.2	73.0	4.7	22.3	0.123	0.647	24.464322	-98.338979

TAMAULIPAS

34 CARR: Tampico - Cd. Mante

CLAVE: 28163

RUTA: MEX-080

AÑO: 2025

LUGAR	ESTACION				CLASIFICACION VEHICULAR EN PORCIENTO										COORDENADAS					
	KM	TE	SC	TDPA	M	A	B	C2	C3	T3S2	T3S3	T3S2R4	OTROS	A	B	C	K'	D	LATITUD	LONGITUD
Tampico	0.00																			
Cd. Madero	3.97																			
T. C. Libramiento Poniente de Tampico (Cuota)	9.79																			
T. Der. Cyanaquim	14.79	1	1	34991	6.9	79.9	1.5	3.2	1.5	2.3	0.8	3.1	0.8	86.8	1.5	11.7	0.066	0.527	22.356372	-97.889106
T. Der. Cyanaquim	14.79	1	2	36617	6.8	80.7	1.4	3.1	1.4	2.1	0.7	3.0	0.8	87.5	1.4	11.1	0.073	0.527	22.356576	-97.889532
Altamira	24.00	1	1	27870	4.7	88.9	1.1	2.2	0.6	1.1	0.5	0.7	0.2	93.6	1.1	5.3	0.073	0.513	22.386161	-97.918100
Altamira	24.00	1	2	27338	4.8	88.7	1.2	2.1	0.6	1.2	0.5	0.7	0.2	93.5	1.2	5.3	0.073	0.513	22.385534	-97.917708
Altamira	24.00	3	1	11148	5.0	84.3	1.8	3.0	1.9	1.5	0.8	1.4	0.3	89.3	1.8	8.9	0.088	0.585	22.423606	-97.945877
Altamira	24.00	3	2	12191	4.9	85.2	1.7	3.1	1.0	1.6	0.7	1.5	0.3	90.1	1.7	8.2	0.076	0.585	22.423518	-97.946027
T. Der. Lomas del Real	33.00	3	1	7872	4.1	72.4	2.2	3.0	2.2	7.2	2.5	5.6	0.8	76.5	2.2	21.3	0.081	0.545	22.477000	-98.003431
T. Der. Lomas del Real	33.00	3	2	8013	4.0	73.2	2.1	2.8	2.1	7.1	2.4	5.5	0.8	77.2	2.1	20.7	0.082	0.545	22.476876	-98.003579
Cuahtémoc	55.80	3	1	6113	3.8	63.2	4.3	3.6	1.9	10.0	3.6	8.7	0.9	67.0	4.3	28.7	0.069	0.522	22.561729	-98.157815
Cuahtémoc	55.80	3	2	6633	3.6	63.1	4.2	3.7	2.1	10.2	3.8	8.5	0.8	66.7	4.2	29.1	0.069	0.522	22.561662	-98.157909
T. Libramiento Estación Manuel - González	73.72																			
Estación Manuel	78.12	1	1	6257	4.1	64.5	4.3	3.4	1.6	9.3	2.8	9.2	0.8	68.6	4.3	27.1	0.079	0.584	22.693888	-98.274906
Estación Manuel	78.12	1	2	6731	4.1	64.1	4.5	3.4	1.7	9.5	2.6	9.3	0.8	68.2	4.5	27.3	0.090	0.584	22.693821	-98.274987
González	96.00	3	0	3152	2.6	84.5	1.9	2.5	1.4	2.9	1.3	2.5	0.4	87.1	1.9	11.0	0.082	0.515	22.821642	-98.451516
Magiscatzin	122.50	3	0	2223	2.5	82.6	1.4	2.9	2.3	3.4	1.0	3.5	0.4	85.1	1.4	13.5	0.100	0.525	22.791637	-98.716855
Faja de Oro	143.00	3	0	2942	2.4	85.4	1.9	2.2	2.0	2.6	0.8	2.3	0.4	87.8	1.9	10.3	0.091	0.513	22.725145	-98.867778
T. C. Cd. Valles - Cd. Victoria	155.00	1	0	5208	1.5	87.8	1.3	2.6	1.7	1.9	1.0	1.6	0.6	89.3	1.3	9.4	0.079	0.517	22.724318	-98.948952

35 CARR: Tuxpam - Tampico

CLAVE: 00529

RUTA: MEX-180

AÑO: 2025

LUGAR	ESTACION				CLASIFICACION VEHICULAR EN PORCIENTO										COORDENADAS					
	KM	TE	SC	TDPA	M	A	B	C2	C3	T3S2	T3S3	T3S2R4	OTROS	A	B	C	K'	D	LATITUD	LONGITUD
Tuxpam	0.00	3	0	6920	8.3	82.3	3.2	3.8	1.0	0.6	0.2	0.5	0.1	90.6	3.2	6.2	0.081	0.556	20.955010	-97.460558
T. C. Tuxpan - Tampico (Cuota)	8.90	3	0	5631	7.9	78.2	4.5	6.5	1.4	0.7	0.2	0.6	0.0	86.1	4.5	9.4	0.092	0.510	20.961425	-97.490231
T. Izq. La Lajuela	28.70	1	0	3680	6.6	80.8	3.2	6.0	1.6	1.2	0.2	0.4	0.0	87.4	3.2	9.4	0.080	0.558	21.039685	-97.593304
T. Izq. Tempoal de Sánchez	45.20	1	0	5473	11.9	79.6	2.8	3.8	0.6	0.7	0.2	0.3	0.1	91.5	2.8	5.7	0.079	0.532	21.089949	-97.730687
T. Izq. Tempoal de Sánchez	45.20	3	0	5279	10.0	76.1	3.6	3.0	1.4	4.1	0.7	0.9	0.2	86.1	3.6	10.3	0.075	0.501	21.097122	-97.731371
Cerro Azul	56.66	1	0	5894	10.0	75.6	3.6	3.2	1.3	4.2	0.9	1.0	0.2	85.6	3.6	10.8	0.078	0.524	21.166789	-97.755150
T. Der. Zacamixtle	64.50	1	0	4714	6.9	70.7	4.3	7.6	2.2	5.2	1.6	1.3	0.2	77.6	4.3	18.1	0.082	0.534	21.234444	-97.732956
T. Der. Zacamixtle	64.50	3	0	7410	6.0	72.9	5.6	7.8	1.7	3.8	1.0	0.9	0.3	78.9	5.6	15.5	0.071	0.510	21.251223	-97.733682
T. Izq. Naranjos	78.60	1	0	6441	7.7	77.0	3.1	3.1	2.2	4.5	1.0	1.0	0.4	84.7	3.1	12.2	0.075	0.513	21.335833	-97.692883
T. Izq. Naranjos	78.60	3	0	9517	15.6	75.5	2.1	2.0	0.9	2.5	0.7	0.6	0.1	91.1	2.1	6.8	0.085	0.504	21.369141	-97.684950

TAMAULIPAS

35 CARR: Túxpam - Tampico

CLAVE: 00529

RUTA: MEX-180

AÑO: 2025

LUGAR	ESTACION				CLASIFICACION VEHICULAR EN PORCIENTO										COORDENADAS					
	KM	TE	SC	TDPA	M	A	B	C2	C3	T3S2	T3S3	T3S2R4	OTROS	A	B	C	K'	D	LATITUD	LONGITUD
T. Der. El Añoño	81.50	3	0	5262	10.1	70.9	5.0	2.8	1.9	5.4	1.6	2.0	0.3	81.0	5.0	14.0	0.073	0.564	21.379399	-97.691094
T. Der. Campo Mamey	94.39	3	0	4128	7.2	71.1	6.1	3.3	2.1	5.7	2.1	2.1	0.3	78.3	6.1	15.6	0.078	0.500	21.457260	-97.763208
T. Der. Ozuluama	124.42	1	0	5442	10.4	70.5	5.2	3.4	1.5	5.5	1.4	1.7	0.4	80.9	5.2	13.9	0.071	0.506	21.666118	-97.859751
T. Der. Ozuluama	124.42	3	0	6929	9.9	67.1	5.0	5.6	2.5	6.0	1.8	1.9	0.2	77.0	5.0	18.0	0.071	0.544	21.686715	-97.850841
T. C. Tuxpan - Tampico (Cuota)	131.32	3	1	3609	9.1	64.3	6.3	5.5	2.1	7.4	2.2	2.5	0.6	73.4	6.3	20.3	0.086	0.545	21.716584	-97.810311
T. C. Tuxpan - Tampico (Cuota)	131.32	3	2	3404	9.2	63.9	6.3	5.7	2.1	7.4	2.2	2.6	0.6	73.1	6.3	20.6	0.070	0.545	21.716630	-97.810442
Tampico Alto	177.80	1	1	4483	6.0	71.9	6.4	4.8	1.5	4.3	2.1	2.3	0.7	77.9	6.4	15.7	0.083	0.556	22.109871	-97.803326
Tampico Alto	177.80	1	2	4648	6.6	71.9	6.1	5.3	1.2	4.0	1.7	2.4	0.8	78.5	6.1	15.4	0.077	0.556	22.109869	-97.803394
Tampico Alto	177.80	3	1	5733	5.7	73.3	6.3	4.9	1.3	4.3	1.7	1.6	0.9	79.0	6.3	14.7	0.077	0.536	22.126915	-97.808571
Tampico Alto	177.80	3	2	5745	6.1	73.3	6.3	5.1	1.3	4.0	1.7	1.4	0.8	79.4	6.3	14.3	0.066	0.536	22.126888	-97.808687
Villa Cuauhtémoc	186.85	1	1	5576	5.0	80.4	1.4	4.6	1.1	3.5	1.5	1.4	1.1	85.4	1.4	13.2	0.078	0.578	22.161609	-97.827497
Villa Cuauhtémoc	186.85	1	2	5460	5.2	79.8	1.4	4.7	1.3	3.3	1.7	1.6	1.0	85.0	1.4	13.6	0.096	0.578	22.161571	-97.827594
Villa Cuauhtémoc	186.85	3	1	8082	15.2	70.1	1.6	1.9	1.4	4.3	1.1	3.4	1.0	85.3	1.6	13.1	0.065	0.514	22.201331	-97.841476
Villa Cuauhtémoc	186.85	3	2	8010	15.2	70.7	1.2	1.9	1.4	4.2	1.1	3.5	0.8	85.9	1.2	12.9	0.069	0.514	22.201290	-97.841528
Lim. Edos. Term. Ver. Ppia. Tamps.	189.82																			
Tampico	191.43																			

36 CARR: Viaducto de Reynosa

CLAVE:

RUTA: MEX

AÑO: 2025

LUGAR	ESTACION				CLASIFICACION VEHICULAR EN PORCIENTO										COORDENADAS					
	KM	TE	SC	TDPA	M	A	B	C2	C3	T3S2	T3S3	T3S2R4	OTROS	A	B	C	K'	D	LATITUD	LONGITUD
T. C. Las Urracas - T. C. (Matamoros - Reynosa)	80.50	3	0	13008	3.9	88.4	1.4	3.1	1.4	0.9	0.4	0.4	0.1	92.3	1.4	6.3	0.081	0.519	26.011748	-98.350088
T. C. Monterrey - Reynosa (Libre)	95.40	1	0	6782	2.7	89.9	1.1	2.5	1.3	1.3	0.7	0.4	0.1	92.6	1.1	6.3	0.076	0.500	26.040316	-98.398170

37 CARR: Libramiento de Reynosa Sur II

CLAVE:

RUTA: MEX-040D

AÑO: 2025

LUGAR	ESTACION				CLASIFICACION VEHICULAR EN PORCIENTO										COORDENADAS					
	KM	TE	SC	TDPA	M	A	B	C2	C3	T3S2	T3S3	T3S2R4	OTROS	A	B	C	K'	D	LATITUD	LONGITUD
T. C. Matamoros - Reynosa	0.00	3	1	1576	2.3	59.1	3.9	5.2	4.0	14.0	3.8	6.6	1.1	61.4	3.9	34.7	0.100	0.657	26.004030	-98.169208
T. C. Matamoros - Reynosa	0.00	3	2	1363	2.0	59.4	4.2	4.9	4.2	14.3	3.6	6.4	1.0	61.4	4.2	34.4	0.097	0.657	26.003719	-98.169234
T. C. Las Urracas - T. C. (Matamoros - Reynosa)	13.70	1	0	5456	3.7	44.4	3.6	5.2	4.2	27.9	2.5	7.3	1.2	48.1	3.6	48.3	0.079	0.634	25.942245	-98.235614
T. C. Las Urracas - T. C. (Matamoros - Reynosa)	13.70	3	0	3729	2.4	45.7	4.7	5.4	4.7	24.4	4.3	7.5	0.9	48.1	4.7	47.2	0.076	0.514	25.928488	-98.300460
T. C. Monterrey - Reynosa	35.80	1	0	2602	3.4	40.1	4.9	5.2	3.1	28.8	5.1	8.4	1.0	43.5	4.9	51.6	0.083	0.521	26.007101	-98.451738

TAMAULIPAS

38 CARR: Libramiento Poniente de Tampico (Cuota)

CLAVE: 28051

RUTA: MEX-070D

AÑO: 2025

LUGAR	ESTACION				CLASIFICACION VEHICULAR EN PORCIENTO										COORDENADAS					
	KM	TE	SC	TDPA	M	A	B	C2	C3	T3S2	T3S3	T3S2R4	OTROS	A	B	C	K'	D	LATITUD	LONGITUD
T. C. Cd. Valles - Tampico	0.00	3	0	11422	8.3	64.2	3.6	3.4	1.7	8.7	2.7	6.7	0.7	72.5	3.6	23.9	0.072	0.531	22.232618	-97.891191
Plaza de Cobro Tampico	5.10	2	0	6722	2.3	49.6	0.9	6.1	4.9	15.9	5.8	12.6	1.9	51.9	0.9	47.2	0.074	0.500	22.275330	-97.893426
T. C. Tampico - Cd. Mante	14.00	1	0	24333	6.0	73.2	2.4	3.5	2.6	5.2	1.6	4.5	1.0	79.2	2.4	18.4	0.081	0.533	22.332051	-97.885810

39 CARR: Matamoros - Reynosa (Cuota)

CLAVE: 28079

RUTA: MEX-002D

AÑO: 2025

LUGAR	ESTACION				CLASIFICACION VEHICULAR EN PORCIENTO										COORDENADAS					
	KM	TE	SC	TDPA	M	A	B	C2	C3	T3S2	T3S3	T3S2R4	OTROS	A	B	C	K'	D	LATITUD	LONGITUD
T. C. Matamoros - Reynosa	26.50	3	1	3545	2.9	71.7	4.0	4.3	3.3	9.3	1.8	2.1	0.6	74.6	4.0	21.4	0.079	0.531	25.996632	-97.751884
T. C. Matamoros - Reynosa	26.50	3	2	3958	2.8	72.5	3.7	4.1	3.2	9.1	1.9	2.0	0.7	75.3	3.7	21.0	0.077	0.531	25.996411	-97.752046
Plaza de Cobro Nuevo Progreso	49.58	2	1	2278	0.3	69.4	2.8	4.1	3.6	13.0	2.8	2.4	1.6	69.7	2.8	27.5	0.101	0.500	26.036283	-97.954508
Plaza de Cobro Nuevo Progreso	49.58	2	2	2278	0.3	69.4	2.8	4.1	3.6	13.0	2.8	2.4	1.6	69.7	2.8	27.5	0.101	0.500	26.036283	-97.954508
Plaza de Cobro Nuevo Progreso	49.58	3	1	3906	2.7	72.7	3.4	4.3	3.7	8.8	1.4	2.2	0.8	75.4	3.4	21.2	0.091	0.501	26.035489	-97.963811
Plaza de Cobro Nuevo Progreso	49.58	3	2	3952	2.2	73.4	3.1	4.7	3.6	8.8	1.7	1.9	0.6	75.6	3.1	21.3	0.082	0.501	26.035221	-97.963470
T. Der. Puente Internacional Rio Bravo Donna	62.98	3	1	5179	2.1	76.6	3.9	4.8	3.0	5.8	1.4	1.7	0.7	78.7	3.9	17.4	0.093	0.602	26.013801	-98.099320
T. Der. Puente Internacional Rio Bravo Donna	62.98	3	2	5614	1.7	76.9	3.7	5.0	3.2	5.4	1.5	2.0	0.6	78.6	3.7	17.7	0.098	0.602	26.013541	-98.099345
T. C. Matamoros - Reynosa	71.00	1	1	5429	2.2	76.5	3.5	5.0	3.2	5.8	1.3	2.0	0.5	78.7	3.5	17.8	0.095	0.589	26.008323	-98.158593
T. C. Matamoros - Reynosa	71.00	1	2	5506	2.1	76.3	3.8	5.3	3.4	5.4	1.1	1.9	0.7	78.4	3.8	17.8	0.100	0.589	26.008057	-98.158540

40 CARR: Aldama - Barra El Tordo

CLAVE: 28620

RUTA: TAM

AÑO: 2025

LUGAR	ESTACION				CLASIFICACION VEHICULAR EN PORCIENTO										COORDENADAS					
	KM	TE	SC	TDPA	M	A	B	C2	C3	T3S2	T3S3	T3S2R4	OTROS	A	B	C	K'	D	LATITUD	LONGITUD
Aldama	0.00	3	0	3345	10.5	84.3	0.4	2.4	1.6	0.4	0.2	0.2	0.0	94.8	0.4	4.8	0.081	0.535	22.915893	-98.064201
Barra El Tordo	20.00																			

41 CARR: Barretal - Nueva Villa de Padilla

CLAVE: 28001

RUTA: TAM-001

AÑO: 2025

LUGAR	ESTACION				CLASIFICACION VEHICULAR EN PORCIENTO										COORDENADAS					
	KM	TE	SC	TDPA	M	A	B	C2	C3	T3S2	T3S3	T3S2R4	OTROS	A	B	C	K'	D	LATITUD	LONGITUD
Barretal	0.00	3	0	3883	2.5	82.1	1.4	7.3	1.6	3.0	1.4	0.5	0.2	84.6	1.4	14.0	0.097	0.589	24.083202	-99.120947
Nueva Villa de Padilla	24.50	1	0	1936	8.7	77.5	0.8	8.6	1.6	2.3	0.2	0.2	0.1	86.2	0.8	13.0	0.094	0.533	24.053179	-98.914536

TAMAULIPAS

42 CARR: China - Méndez

CLAVE: 00191

RUTA: NL-TAM

AÑO: 2025

LUGAR	ESTACION				CLASIFICACION VEHICULAR EN PORCIENTO													COORDENADAS		
	KM	TE	SC	TDPA	M	A	B	C2	C3	T3S2	T3S3	T3S2R4	OTROS	A	B	C	K'	D	LATITUD	LONGITUD
China	0.00	3	0	1171	1.5	91.9	0.9	3.6	0.9	0.8	0.3	0.1	0.0	93.4	0.9	5.7	0.114	0.579	25.697495	-99.221239
Lim. Edos. Term. N. L. Ppia. Tamps.	75.00																			
Méndez	100.00																			

43 CARR: Ébano - Estación Manuel

CLAVE: 24624

RUTA: SLP-TAM

AÑO: 2025

LUGAR	ESTACION				CLASIFICACION VEHICULAR EN PORCIENTO													COORDENADAS		
	KM	TE	SC	TDPA	M	A	B	C2	C3	T3S2	T3S3	T3S2R4	OTROS	A	B	C	K'	D	LATITUD	LONGITUD
Ébano	0.00	3	0	2764	18.2	72.7	0.3	1.5	2.3	3.3	0.2	1.3	0.2	90.9	0.3	8.8	0.077	0.509	22.233505	-98.366104
Lím. de Edos. Term. S. L. P. Ppia. Ver.	2.71																			
Lím. de Edos. Term. Ver. Ppia. S. L. P.	3.95																			
Lím. de Edos. Term. S. L. P. Ppia. Ver.	5.00																			
Lím. de Edos. Term. Ver. Ppia. Tamps.	25.00																			
Estación Manuel	65.60																			

44 CARR: El Limón - Ocampo

CLAVE: 28019

RUTA: TAM-019

AÑO: 2025

LUGAR	ESTACION				CLASIFICACION VEHICULAR EN PORCIENTO													COORDENADAS		
	KM	TE	SC	TDPA	M	A	B	C2	C3	T3S2	T3S3	T3S2R4	OTROS	A	B	C	K'	D	LATITUD	LONGITUD
T. C. Cd. Valles - Cd. Victoria	0.00	3	0	2572	14.8	68.1	1.7	6.9	3.6	1.8	0.5	2.3	0.3	82.9	1.7	15.4	0.078	0.522	22.837080	-99.024845
Ocampo	43.00	1	0	2298	16.5	71.4	1.1	3.9	1.9	1.4	0.5	2.8	0.5	87.9	1.1	11.0	0.087	0.538	22.830496	-99.321061

45 CARR: Ent. Huisachito - Nuevo Laredo

CLAVE: 00074

RUTA: NL-001-TAM

AÑO: 2025

LUGAR	ESTACION				CLASIFICACION VEHICULAR EN PORCIENTO													COORDENADAS		
	KM	TE	SC	TDPA	M	A	B	C2	C3	T3S2	T3S3	T3S2R4	OTROS	A	B	C	K'	D	LATITUD	LONGITUD
T. C. Monterrey - Colombia	0.00	3	0	1757	0.4	76.6	3.7	8.8	3.6	3.5	2.6	0.5	0.3	77.0	3.7	19.3	0.092	0.648	27.354517	-99.949176
Lim. Edos. Term. N. L. Ppia. Tamps.	19.00																			
X. C. Libramiento de Nuevo Laredo	47.00	1	0	2349	0.6	75.2	1.2	13.5	2.8	3.9	1.9	0.8	0.1	75.8	1.2	23.0	0.080	0.628	27.473823	-99.650313
Nuevo Laredo	51.00	1	0	16072	2.1	88.2	1.2	3.5	1.8	2.1	0.4	0.4	0.3	90.3	1.2	8.5	0.088	0.631	27.485681	-99.583259

TAMAULIPAS

46 CARR: Ent. Las Blancas - Río Bravo

CLAVE: 28003

RUTA: TAM-003

AÑO: 2025

LUGAR	ESTACION				CLASIFICACION VEHICULAR EN PORCIENTO										COORDENADAS					
	KM	TE	SC	TDPA	M	A	B	C2	C3	T3S2	T3S3	T3S2R4	OTROS	A	B	C	K'	D	LATITUD	LONGITUD
T. C. Cd. Victoria - Matamoros	0.00	3	0	3559	1.0	87.9	0.7	7.5	0.8	1.7	0.2	0.1	0.1	88.9	0.7	10.4	0.085	0.645	25.665964	-97.604400
Valle Hermoso	21.00	1	1	2111	1.6	85.8	1.6	7.5	1.2	1.2	0.9	0.1	0.1	87.4	1.6	11.0	0.089	0.516	25.666724	-97.769321
Valle Hermoso	21.00	1	2	2398	1.7	86.2	1.3	7.5	1.1	1.1	0.9	0.1	0.1	87.9	1.3	10.8	0.086	0.516	25.666665	-97.769331
Río Bravo	91.00	1	0	8685	3.2	79.6	1.4	9.4	1.1	2.9	1.3	0.6	0.5	82.8	1.4	15.8	0.079	0.536	25.976448	-98.118747

47 CARR: La Joya - Méndez

CLAVE: 28623

RUTA: TAM

AÑO: 2025

LUGAR	ESTACION				CLASIFICACION VEHICULAR EN PORCIENTO										COORDENADAS					
	KM	TE	SC	TDPA	M	A	B	C2	C3	T3S2	T3S3	T3S2R4	OTROS	A	B	C	K'	D	LATITUD	LONGITUD
T. C. Cd. Victoria - Matamoros	0.00	3	0	699	1.5	87.5	1.5	4.8	1.6	1.2	0.7	0.5	0.7	89.0	1.5	9.5	0.094	0.652	24.937138	-98.133266
Méndez	66.00																			

48 CARR: Las Yescas - Valle Hermoso

CLAVE: 28614

RUTA: TAM

AÑO: 2025

LUGAR	ESTACION				CLASIFICACION VEHICULAR EN PORCIENTO										COORDENADAS					
	KM	TE	SC	TDPA	M	A	B	C2	C3	T3S2	T3S3	T3S2R4	OTROS	A	B	C	K'	D	LATITUD	LONGITUD
T. C. Cd. Victoria - Matamoros	0.00	3	0	2423	1.4	84.6	2.0	2.4	1.0	3.2	1.2	3.5	0.7	86.0	2.0	12.0	0.088	0.565	25.460592	-97.816254
Valle Hermoso	24.50	1	0	6765	1.6	86.0	1.8	2.3	0.9	2.3	1.5	3.0	0.6	87.6	1.8	10.6	0.069	0.606	25.577858	-97.816072

49 CARR: Libramiento de Cd. Victoria

CLAVE: 28282

RUTA: TAM

AÑO: 2025

LUGAR	ESTACION				CLASIFICACION VEHICULAR EN PORCIENTO										COORDENADAS					
	KM	TE	SC	TDPA	M	A	B	C2	C3	T3S2	T3S3	T3S2R4	OTROS	A	B	C	K'	D	LATITUD	LONGITUD
X. C. Ent. Tula - Cd. Victoria	0.00	3	1	7834	12.6	78.8	0.4	1.3	2.6	3.2	0.3	0.5	0.3	91.4	0.4	8.2	0.074	0.639	23.713711	-99.177107
X. C. Ent. Tula - Cd. Victoria	0.00	3	2	8163	12.3	78.5	0.4	1.5	2.8	3.3	0.3	0.6	0.3	90.8	0.4	8.8	0.096	0.639	23.713657	-99.177337
X. C. Cd. Victoria - Matamoros	13.40	1	1	17733	4.9	90.8	0.9	1.2	0.8	0.5	0.2	0.3	0.4	95.7	0.9	3.4	0.091	0.548	23.773254	-99.133865
X. C. Cd. Victoria - Matamoros	13.40	1	2	16409	5.1	90.3	1.1	1.2	0.9	0.5	0.2	0.4	0.3	95.4	1.1	3.5	0.084	0.548	23.773525	-99.133944
X. C. Cd. Victoria - Matamoros	13.40	3	1	15525	4.9	90.3	0.6	1.7	1.1	0.7	0.2	0.4	0.1	95.2	0.6	4.2	0.103	0.511	23.763186	-99.111732
X. C. Cd. Victoria - Matamoros	13.40	3	2	15605	5.3	89.7	0.8	1.4	1.0	0.7	0.3	0.5	0.3	95.0	0.8	4.2	0.098	0.511	23.762919	-99.110603
X. C. Cd. Victoria - Soto La Marina	19.70	1	1	8380	7.6	84.8	0.8	3.1	1.6	0.9	0.4	0.6	0.2	92.4	0.8	6.8	0.090	0.531	23.729765	-99.092747
X. C. Cd. Victoria - Soto La Marina	19.70	1	2	8517	7.9	85.3	0.5	2.5	1.9	0.8	0.4	0.5	0.2	93.2	0.5	6.3	0.088	0.531	23.729753	-99.092655
T. C. Cd. Valles - Cd. Victoria	25.90	1	1	1567	3.6	78.0	2.8	2.7	3.7	3.4	3.1	2.1	0.6	81.6	2.8	15.6	0.101	0.624	23.678265	-99.098475
T. C. Cd. Valles - Cd. Victoria	25.90	1	2	1387	4.1	76.5	2.8	3.4	3.6	3.6	2.9	2.5	0.6	80.6	2.8	16.6	0.105	0.624	23.678244	-99.098171

TAMAULIPAS

50 CARR: Libramiento de Mier

CLAVE: 28282

RUTA: TAMPS

AÑO: 2025

LUGAR	ESTACION				CLASIFICACION VEHICULAR EN PORCIENTO														COORDENADAS	
	KM	TE	SC	TDPA	M	A	B	C2	C3	T3S2	T3S3	T3S2R4	OTROS	A	B	C	K'	D	LATITUD	LONGITUD
T. C. Monterrey - Mier	0.00	3	0	702	2.9	65.7	2.7	11.6	5.0	5.3	1.8	4.6	0.4	68.6	2.7	28.7	0.127	0.551	26.428046	-99.163370
T. C. Reynosa - Nuevo Laredo	2.70																			

51 CARR: Libramiento de Nuevo Laredo

CLAVE: 28030

RUTA: TAM

AÑO: 2025

LUGAR	ESTACION				CLASIFICACION VEHICULAR EN PORCIENTO														COORDENADAS	
	KM	TE	SC	TDPA	M	A	B	C2	C3	T3S2	T3S3	T3S2R4	OTROS	A	B	C	K'	D	LATITUD	LONGITUD
T. C. Monterrey - Nuevo Laredo	0.00	3	1	21068	3.6	73.0	2.3	3.1	6.7	8.9	1.1	0.8	0.5	76.6	2.3	21.1	0.078	0.531	27.426285	-99.537625
T. C. Monterrey - Nuevo Laredo	0.00	3	2	20782	3.9	72.0	2.5	3.3	6.5	9.0	1.3	1.1	0.4	75.9	2.5	21.6	0.080	0.531	27.426145	-99.537644
T. C. Nuevo Laredo - Piedras Negras	18.00	1	1	4024	4.2	39.1	2.0	6.3	12.0	33.5	1.2	1.1	0.6	43.3	2.0	54.7	0.085	0.537	27.526758	-99.581814
T. C. Nuevo Laredo - Piedras Negras	18.00	1	2	4015	4.5	39.8	2.0	6.0	11.9	33.1	1.2	0.8	0.7	44.3	2.0	53.7	0.103	0.537	27.526742	-99.581878

52 CARR: Libramiento de Nuevo Laredo II

CLAVE: 28626

RUTA: TAM

AÑO: 2025

LUGAR	ESTACION				CLASIFICACION VEHICULAR EN PORCIENTO														COORDENADAS	
	KM	TE	SC	TDPA	M	A	B	C2	C3	T3S2	T3S3	T3S2R4	OTROS	A	B	C	K'	D	LATITUD	LONGITUD
T. C. Monterrey - Nuevo Laredo	0.00	3	0	11567	6.3	13.4	5.8	6.1	5.4	57.2	1.2	3.6	1.0	19.7	5.8	74.5	0.064	0.597	27.308916	-99.608438
T. C. Nuevo Laredo - Piedras Negras	32.20	1	1	6157	1.9	30.2	0.6	6.4	11.3	43.0	3.4	2.0	1.2	32.1	0.6	67.3	0.071	0.555	27.563088	-99.595983
T. C. Nuevo Laredo - Piedras Negras	32.20	1	2	6269	2.0	30.2	0.7	6.6	11.1	42.7	3.8	1.9	1.0	32.2	0.7	67.1	0.079	0.555	27.562901	-99.596760

53 CARR: Libramiento de Río Bravo

CLAVE: 28002

RUTA: TAM

AÑO: 2025

LUGAR	ESTACION				CLASIFICACION VEHICULAR EN PORCIENTO														COORDENADAS	
	KM	TE	SC	TDPA	M	A	B	C2	C3	T3S2	T3S3	T3S2R4	OTROS	A	B	C	K'	D	LATITUD	LONGITUD
T. C. Matamoros - Reynosa (1° Acceso)	0.00	3	1	2485	2.6	79.4	2.2	3.7	2.9	4.9	1.7	1.8	0.8	82.0	2.2	15.8	0.108	0.530	25.971623	-98.052573
T. C. Matamoros - Reynosa (1° Acceso)	0.00	3	2	2754	2.4	80.3	2.2	3.6	2.9	4.7	1.6	1.7	0.6	82.7	2.2	15.1	0.085	0.530	25.971538	-98.052567
T. C. Matamoros - Reynosa (2° Acceso)	13.10	1	1	8080	2.1	85.8	1.9	2.6	2.3	2.5	0.6	1.6	0.6	87.9	1.9	10.2	0.090	0.588	25.989258	-98.125786
T. C. Matamoros - Reynosa (2° Acceso)	13.10	1	2	8501	1.8	85.5	2.0	2.7	2.5	2.5	0.8	1.7	0.5	87.3	2.0	10.7	0.102	0.588	25.989197	-98.125860

54 CARR: Los Guerra - Los Herreras

CLAVE: 19031

RUTA: TAM-NL

AÑO: 2025

LUGAR	ESTACION				CLASIFICACION VEHICULAR EN PORCIENTO														COORDENADAS	
	KM	TE	SC	TDPA	M	A	B	C2	C3	T3S2	T3S3	T3S2R4	OTROS	A	B	C	K'	D	LATITUD	LONGITUD
Los Guerra	0.00																			
Lim. Edos. Term. Tamps. Ppia. N. L.	46.00																			

TAMAULIPAS

54 CARR : Los Guerra - Los Herreras

CLAVE: 19031

RUTA: TAM-NL

AÑO: 2025

LUGAR	ESTACION				CLASIFICACION VEHICULAR EN PORCIENTO														COORDENADAS	
	KM	TE	SC	TDPA	M	A	B	C2	C3	T3S2	T3S3	T3S2R4	OTROS	A	B	C	K'	D	LATITUD	LONGITUD
Los Herreras	73.00	1	0	463	4.0	87.2	0.5	6.8	1.2	0.2	0.1	0.0	0.0	91.2	0.5	8.3	0.106	0.571	25.902644	-99.393464

55 CARR : Peña Blanca - Cd. Camargo

CLAVE: 00102

RUTA: NL-TAM

AÑO: 2025

LUGAR	ESTACION				CLASIFICACION VEHICULAR EN PORCIENTO														COORDENADAS	
	KM	TE	SC	TDPA	M	A	B	C2	C3	T3S2	T3S3	T3S2R4	OTROS	A	B	C	K'	D	LATITUD	LONGITUD
T. C. Monterrey - Reynosa	0.00	3	0	381	0.9	79.3	0.7	12.3	1.8	1.4	3.1	0.3	0.2	80.2	0.7	19.1	0.113	0.721	25.836625	-99.008477
Lim. Edos. Term. N. L. Ppia. Tamps.	30.00																			
Cd. Camargo	65.00	1	0	2964	3.2	83.7	1.1	2.0	3.1	4.5	1.6	0.6	0.2	86.9	1.1	12.0	0.066	0.564	26.304236	-98.834752

56 CARR : Potrero Nuevo - Rancho El Mezquital

CLAVE: 28615

RUTA: TAM

AÑO: 2025

LUGAR	ESTACION				CLASIFICACION VEHICULAR EN PORCIENTO														COORDENADAS	
	KM	TE	SC	TDPA	M	A	B	C2	C3	T3S2	T3S3	T3S2R4	OTROS	A	B	C	K'	D	LATITUD	LONGITUD
T. C. Cd. Victoria - Matamoros	0.00	3	0	2024	0.7	74.7	1.4	9.6	2.5	2.5	2.5	6.1	0.0	75.4	1.4	23.2	0.078	0.525	25.713005	-97.570296
Puerto El Mezquital	66.00																			

57 CARR : Ramal a Gómez Farías

CLAVE: 28020

RUTA: TAM-020

AÑO: 2025

LUGAR	ESTACION				CLASIFICACION VEHICULAR EN PORCIENTO														COORDENADAS	
	KM	TE	SC	TDPA	M	A	B	C2	C3	T3S2	T3S3	T3S2R4	OTROS	A	B	C	K'	D	LATITUD	LONGITUD
T. C. Cd. Valles - Cd. Victoria	0.00	3	0	1333	25.3	70.5	0.6	1.9	0.6	0.8	0.2	0.1	0.0	95.8	0.6	3.6	0.100	0.526	23.023423	-99.095029
Gómez Farías	11.00	1	0	1059	24.8	66.2	0.4	6.9	0.5	0.8	0.4	0.0	0.0	91.0	0.4	8.6	0.114	0.545	23.025449	-99.143315

58 CARR : Ramal a Xicoténcatl

CLAVE: 28619

RUTA: TAM

AÑO: 2025

LUGAR	ESTACION				CLASIFICACION VEHICULAR EN PORCIENTO														COORDENADAS	
	KM	TE	SC	TDPA	M	A	B	C2	C3	T3S2	T3S3	T3S2R4	OTROS	A	B	C	K'	D	LATITUD	LONGITUD
T. C. Cd. Valles - Cd. Victoria	0.00	3	0	1785	13.5	80.1	0.3	2.4	2.3	0.5	0.6	0.2	0.1	93.6	0.3	6.1	0.086	0.516	22.944173	-99.009722
Xicoténcatl	13.00	1	0	4203	12.0	77.9	1.5	2.2	1.7	1.6	0.8	2.0	0.3	89.9	1.5	8.6	0.085	0.539	22.985617	-98.948769

TAMAULIPAS

59 CARR: San Fernando - Carboneras

CLAVE: 28618

RUTA: TAM

AÑO: 2025

LUGAR	ESTACION				CLASIFICACION VEHICULAR EN PORCIENTO														COORDENADAS	
	KM	TE	SC	TDPA	M	A	B	C2	C3	T3S2	T3S3	T3S2R4	OTROS	A	B	C	K'	D	LATITUD	LONGITUD
San Fernando	0.00	3	0	3086	3.8	89.7	0.9	2.2	0.7	1.1	1.3	0.2	0.1	93.5	0.9	5.6	0.075	0.539	24.834667	-98.113736
Carboneras	57.00																			

60 CARR: Soto La Marina - La Pesca

CLAVE: 28049

RUTA: TAM-070

AÑO: 2025

LUGAR	ESTACION				CLASIFICACION VEHICULAR EN PORCIENTO														COORDENADAS	
	KM	TE	SC	TDPA	M	A	B	C2	C3	T3S2	T3S3	T3S2R4	OTROS	A	B	C	K'	D	LATITUD	LONGITUD
T. C. Soto La Marina - La Coma	0.00	3	0	2096	11.2	84.8	0.7	2.4	0.4	0.4	0.1	0.0	0.0	96.0	0.7	3.3	0.104	0.716	23.780523	-98.185278
La Pesca	50.00																			

61 CARR: T. C. (Valle Hermoso - Empalme) - Matamoros

CLAVE: 28005

RUTA: TAM-005

AÑO: 2025

LUGAR	ESTACION				CLASIFICACION VEHICULAR EN PORCIENTO														COORDENADAS	
	KM	TE	SC	TDPA	M	A	B	C2	C3	T3S2	T3S3	T3S2R4	OTROS	A	B	C	K'	D	LATITUD	LONGITUD
T. C. Valle Hermoso - Empalme	0.00	3	0	4475	2.8	83.9	1.1	9.1	1.2	1.0	0.4	0.4	0.1	86.7	1.1	12.2	0.071	0.509	25.775090	-97.790883
Anáhuac	2.00	3	0	1739	0.7	95.1	0.7	2.5	0.4	0.3	0.1	0.2	0.0	95.8	0.7	3.5	0.091	0.563	25.775108	-97.765476
Matamoros	33.90	1	1	14811	5.4	87.9	1.2	2.1	0.9	0.9	0.2	1.0	0.4	93.3	1.2	5.5	0.078	0.506	25.864420	-97.576253
Matamoros	33.90	1	2	13718	5.4	87.6	1.2	1.9	1.0	0.9	0.3	1.3	0.4	93.0	1.2	5.8	0.070	0.506	25.864473	-97.576345

62 CARR: T. C. Libramiento Cd. Victoria - San Antonio

CLAVE:

RUTA: TAM-126

AÑO: 2025

LUGAR	ESTACION				CLASIFICACION VEHICULAR EN PORCIENTO														COORDENADAS	
	KM	TE	SC	TDPA	M	A	B	C2	C3	T3S2	T3S3	T3S2R4	OTROS	A	B	C	K'	D	LATITUD	LONGITUD
T. C. Libramiento Cd. Victoria	0.00	3	0	5738	3.6	58.1	4.3	3.1	1.8	14.7	2.9	10.6	0.9	61.7	4.3	34.0	0.067	0.513	23.658716	-99.114916
San Antonio	37.50	1	0	5493	3.9	59.5	4.2	3.3	2.0	14.0	2.8	9.4	0.9	63.4	4.2	32.4	0.066	0.593	23.586176	-99.320444

63 CARR: Valle Hermoso - Empalme

CLAVE: 28004

RUTA: TAM-004

AÑO: 2025

LUGAR	ESTACION				CLASIFICACION VEHICULAR EN PORCIENTO														COORDENADAS	
	KM	TE	SC	TDPA	M	A	B	C2	C3	T3S2	T3S3	T3S2R4	OTROS	A	B	C	K'	D	LATITUD	LONGITUD
Valle Hermoso	0.00	3	0	10040	1.7	90.4	1.2	2.4	1.5	1.2	0.4	0.9	0.3	92.1	1.2	6.7	0.081	0.524	25.694246	-97.815874
Empalme	28.38	1	0	4713	1.5	83.2	1.8	7.7	1.5	2.1	0.8	1.2	0.2	84.7	1.8	13.5	0.085	0.570	25.873569	-97.795672

TAMAULIPAS

64 CARR: Ent. El Ojito - Abasolo

CLAVE: 28579

RUTA: MEX-107-TAM

AÑO: 2025

LUGAR	ESTACION				CLASIFICACION VEHICULAR EN PORCIENTO														COORDENADAS	
	KM	TE	SC	TDPA	M	A	B	C2	C3	T3S2	T3S3	T3S2R4	OTROS	A	B	C	K'	D	LATITUD	LONGITUD
T. C. Soto La Marina - La Coma	0.00	3	0	470	3.2	88.8	1.7	4.2	0.9	0.7	0.2	0.3	0.0	92.0	1.7	6.3	0.096	0.578	23.941687	-98.167036
Abasolo	27.00																			

65 CARR: Santander Jiménez - Abasolo

CLAVE: 28579

RUTA: MEX-107-TAM

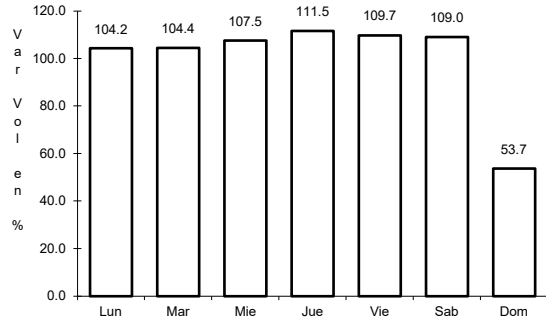
AÑO: 2025

LUGAR	ESTACION				CLASIFICACION VEHICULAR EN PORCIENTO														COORDENADAS	
	KM	TE	SC	TDPA	M	A	B	C2	C3	T3S2	T3S3	T3S2R4	OTROS	A	B	C	K'	D	LATITUD	LONGITUD
T. C. Cd. Victoria - Matamoros	0.00	3	0	1536	3.1	90.8	0.8	2.7	0.8	0.7	0.6	0.2	0.3	93.9	0.8	5.3	0.088	0.585	24.205648	-98.477943
Abasolo	20.00	1	0	2606	6.1	87.3	1.2	3.0	0.9	0.8	0.4	0.2	0.1	93.4	1.2	5.4	0.112	0.512	24.064971	-98.383186

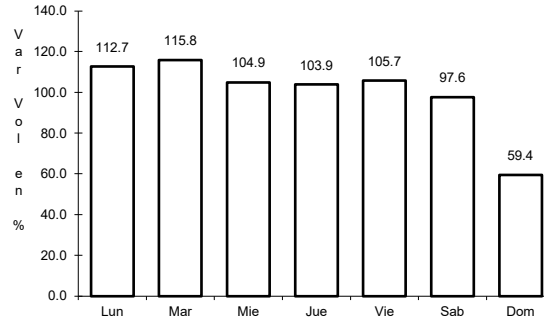
1 CARR: Acceso a Puente Internacional Reynosa - Pharr

CLAVE:

ruta: MEX-002



Km: 0.00                      Tipo: 3                      Sent: 1

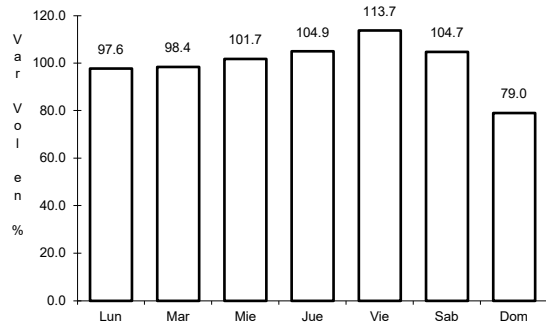


Km: 0.00                      Tipo: 3                      Sent: 2

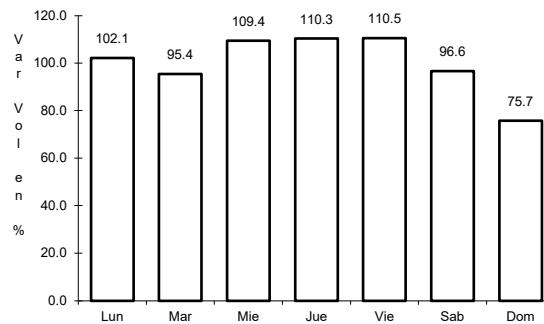
2 CARR: Altamira - T. C. (Petrocel -Puerto Industrial Altamira)

CLAVE:

ruta: MEX-080



Km: 0.00                      Tipo: 3                      Sent: 1

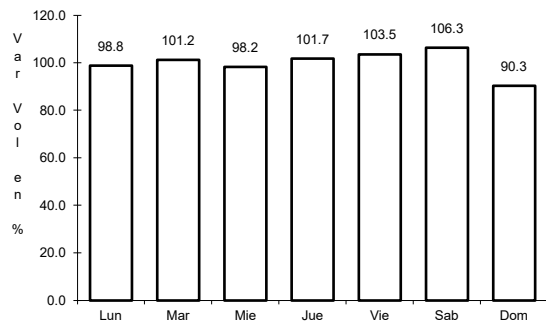


Km: 0.00                      Tipo: 3                      Sent: 2

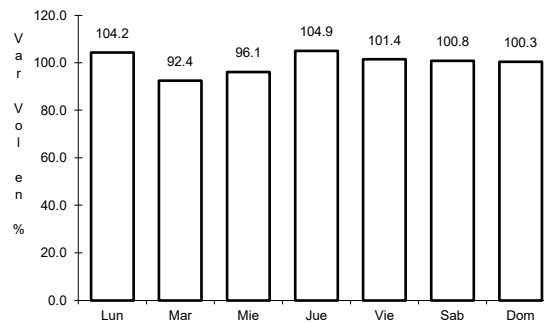
3 CARR: Cd. Valles - Cd. Victoria

CLAVE: 00509

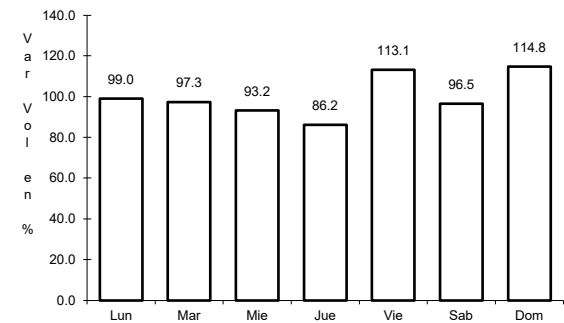
ruta: MEX-085



Km: 0.00                      Tipo: 3                      Sent: 0



Km: 110.00                      Tipo: 3                      Sent: 0

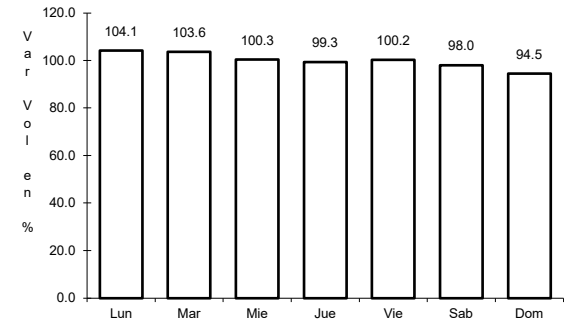
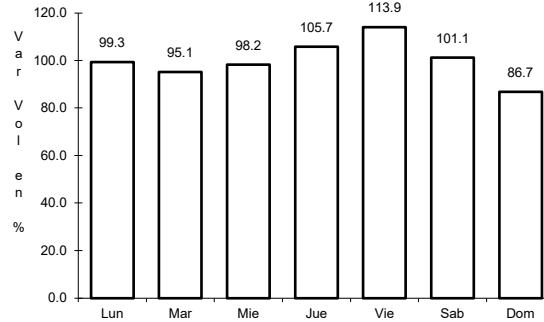
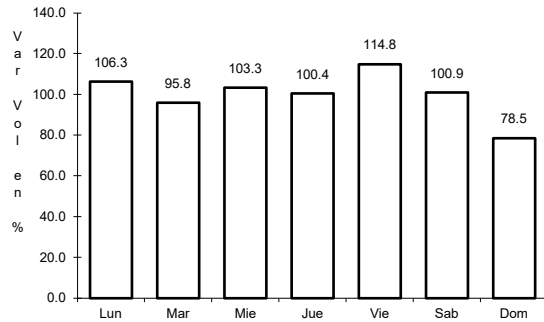


Km: 232.00                      Tipo: 1                      Sent: 0

4 CARR: Cd. Valles - Tampico

CLAVE: 00138

ruta: MEX-070



Km: 0.00                      Tipo: 3                      Sent: 0

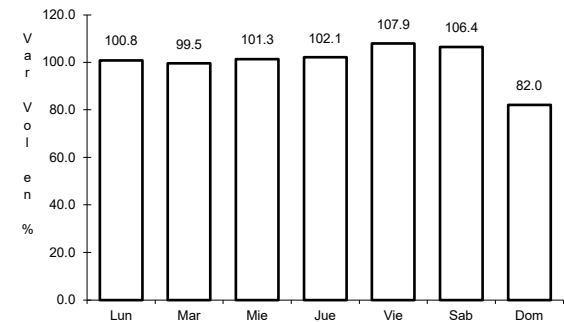
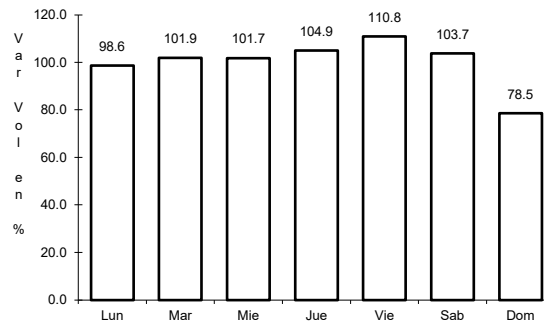
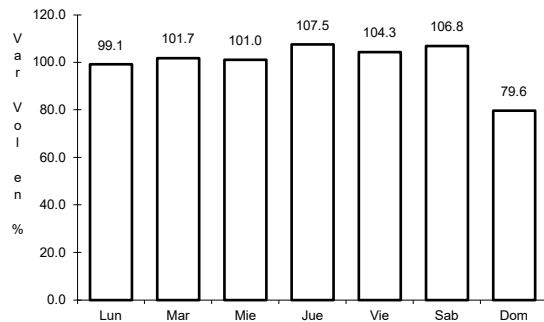
Km: 138.00                      Tipo: 1                      Sent: 1

Km: 138.00                      Tipo: 1                      Sent: 2

5 CARR: Cd. Victoria - Matamoros

CLAVE: 28139

ruta: MEX-101-180



Km: 5.00                      Tipo: 3                      Sent: 1

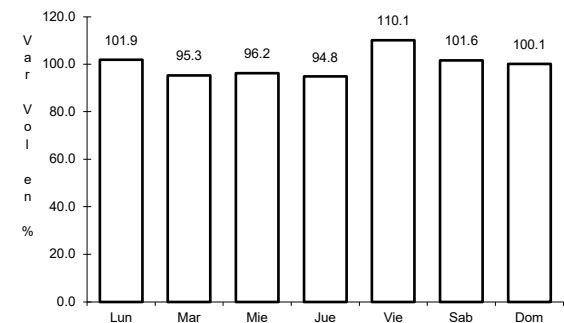
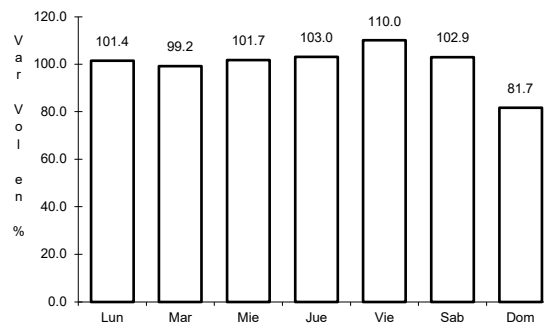
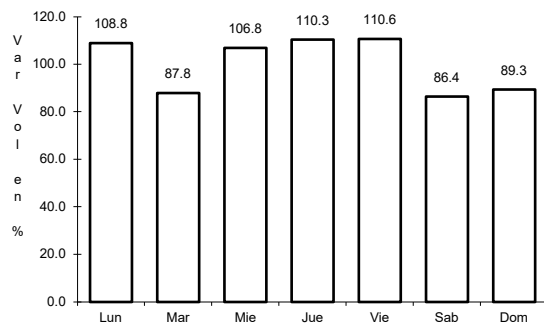
Km: 5.00                      Tipo: 3                      Sent: 2

Km: 175.00                      Tipo: 3                      Sent: 0

6 CARR: Cd. Victoria - Soto La Marina

CLAVE: 28009

ruta: MEX-070



Km: 0.00                      Tipo: 3                      Sent: 1

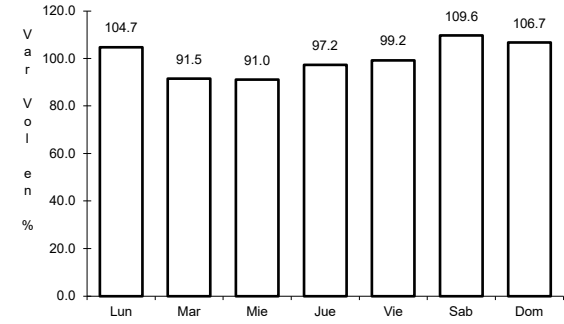
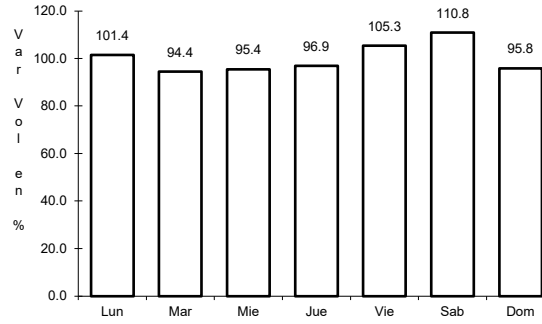
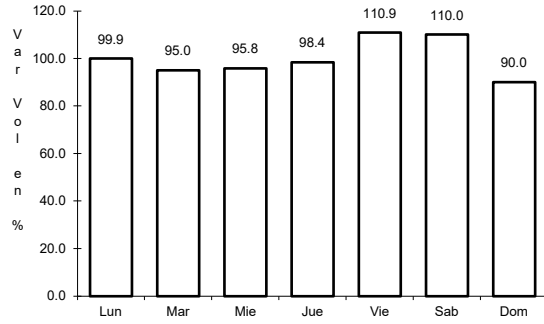
Km: 0.00                      Tipo: 3                      Sent: 2

Km: 116.80                      Tipo: 1                      Sent: 0

7 CARR: Ciudad Victoria - Monterrey

CLAVE: 00462

ruta: MEX-085



Km: 0.00      Tipo: 3      Sent: 1

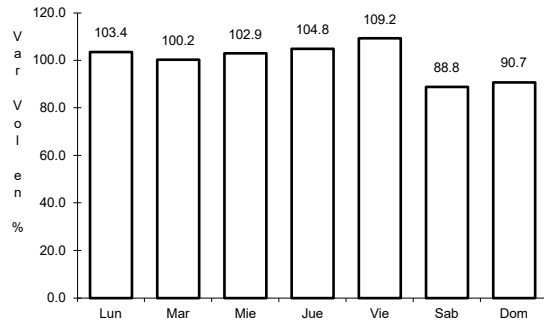
Km: 0.00      Tipo: 3      Sent: 2

Km: 154.00      Tipo: 1      Sent: 0

8 CARR: Corredor Internacional Reynosa

CLAVE:

ruta: MEX

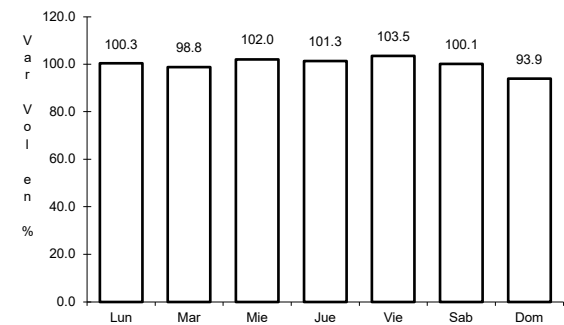
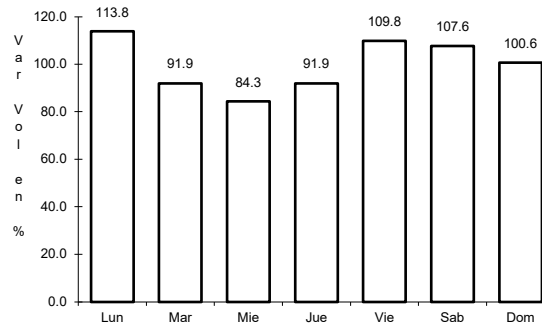
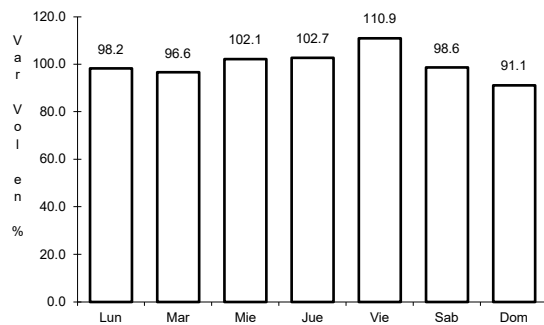


Km: 7.48      Tipo: 1      Sent: 0

9 CARR: Ent. El Huizache - Antigua Morelos

CLAVE: 00136

ruta: MEX-080



Km: 0.00      Tipo: 3      Sent: 0

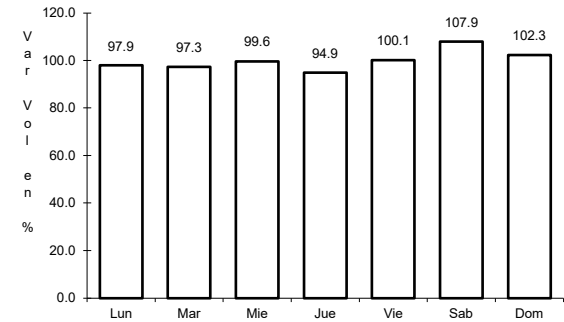
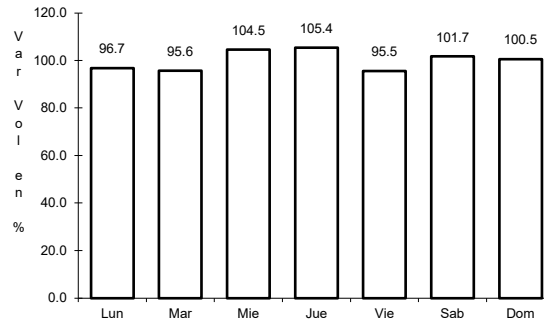
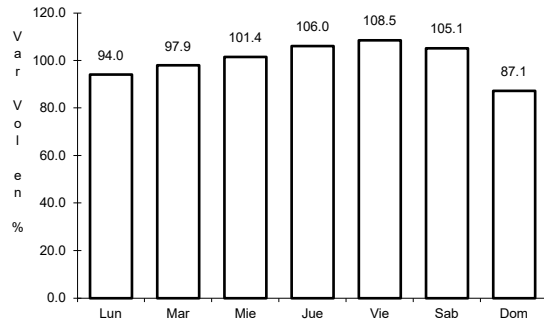
Km: 112.00      Tipo: 1      Sent: 0

Km: 198.00      Tipo: 1      Sent: 0

10 CARR: Ent. Tula - Cd. Victoria

CLAVE: 00179

ruta: MEX-101



Km: 0.00                      Tipo: 3                      Sent: 0

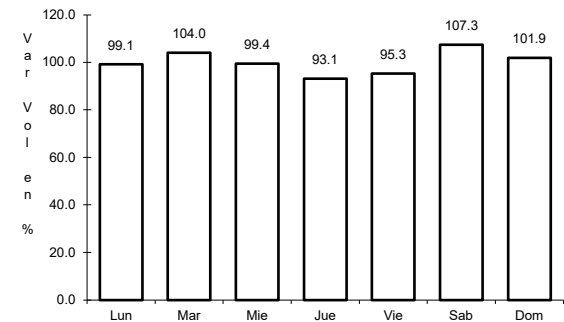
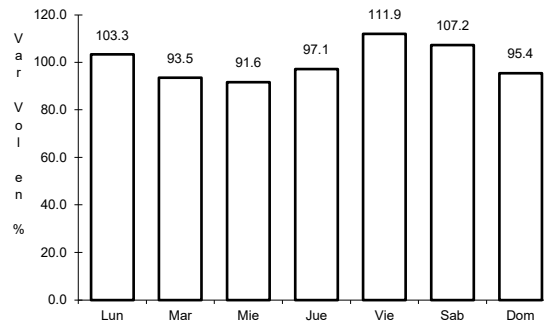
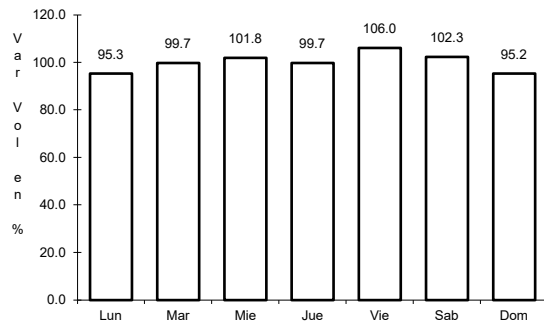
Km: 180.00                      Tipo: 1                      Sent: 1

Km: 180.00                      Tipo: 1                      Sent: 2

11 CARR: Estación Manuel - T. C. (Cd. Victoria - Soto La Marina)

CLAVE: 28294

ruta: MEX-180



Km: 36.00                      Tipo: 3                      Sent: 0

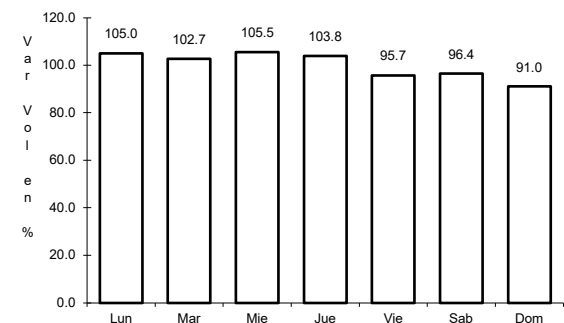
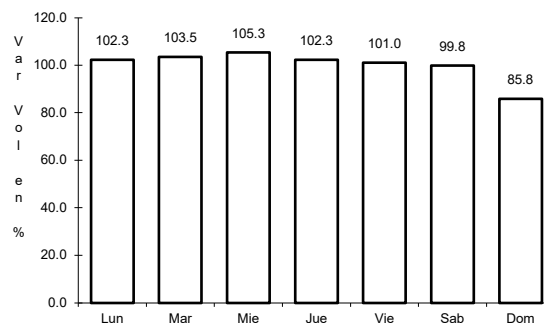
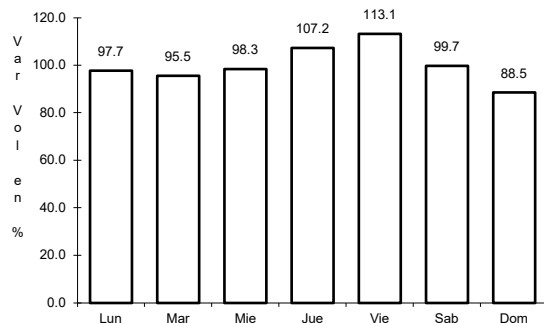
Km: 69.00                      Tipo: 3                      Sent: 0

Km: 145.00                      Tipo: 1                      Sent: 0

12 CARR: González - Llera de Canales

CLAVE: 28578

ruta: MEX-081



Km: 0.00                      Tipo: 3                      Sent: 0

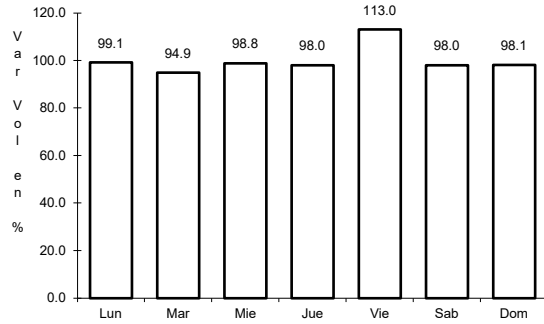
Km: 58.50                      Tipo: 1                      Sent: 0

Km: 89.00                      Tipo: 1                      Sent: 0

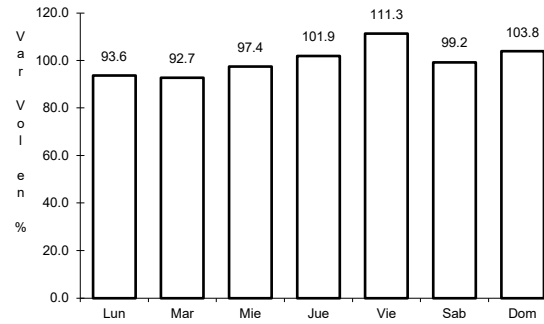
13 CARR: Ignacio Zaragoza - T. C. (Ciudad Victoria - Monterrey)

CLAVE: 28625

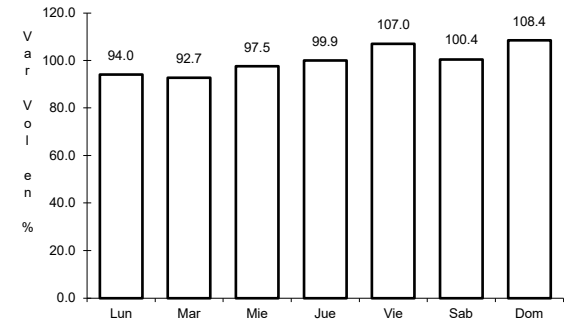
ruta: MEX-083



Km: 0.00      Tipo: 3      Sent: 0



Km: 63.45      Tipo: 3      Sent: 0

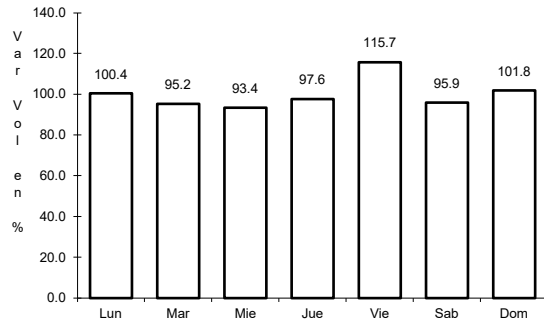


Km: 94.30      Tipo: 1      Sent: 0

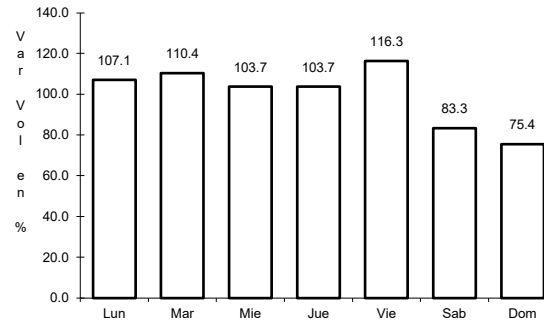
14 CARR: Las Urracas - T. C. (Matamoros - Reynosa)

CLAVE: 28029

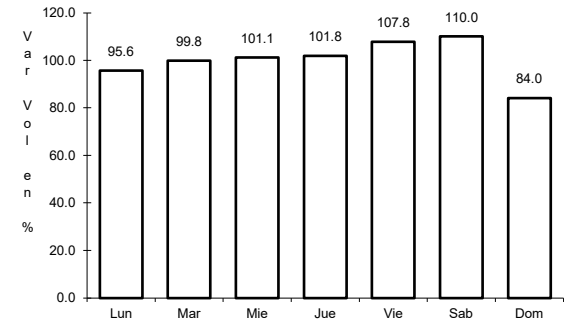
ruta: MEX-097



Km: 0.00      Tipo: 3      Sent: 0



Km: 113.25      Tipo: 1      Sent: 1

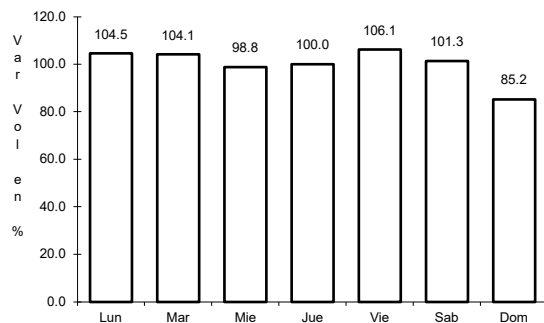


Km: 113.25      Tipo: 1      Sent: 2

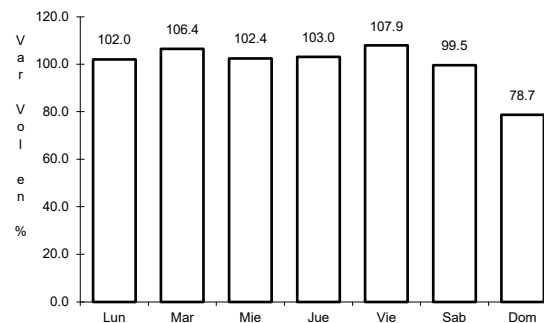
15 CARR: Libramiento de Reynosa

CLAVE: 28008

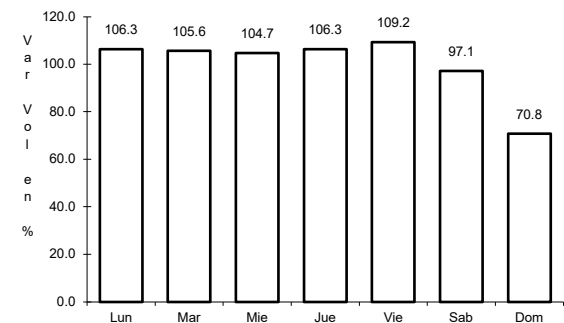
ruta: MEX-002



Km: 0.00      Tipo: 3      Sent: 2



Km: 8.66      Tipo: 1      Sent: 1

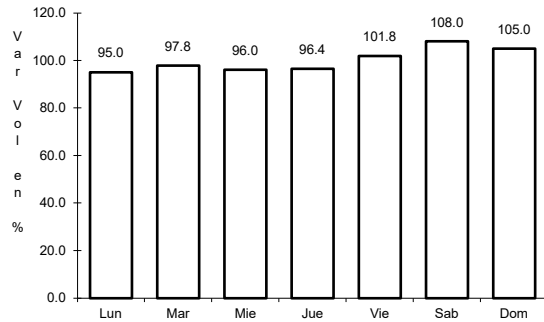


Km: 8.66      Tipo: 1      Sent: 2

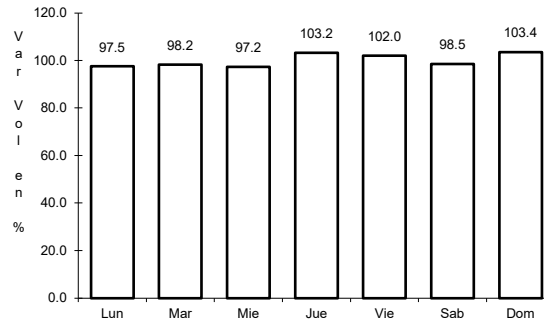
16 CARR: Libramiento de San Fernando

CLAVE:

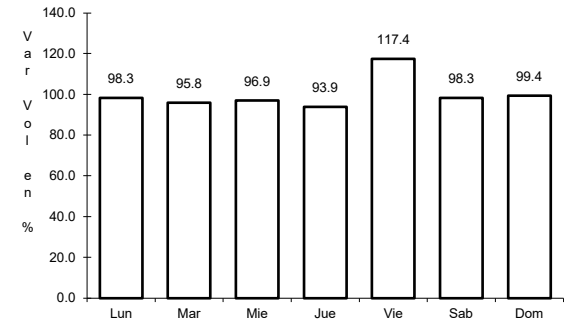
RUTA: MEX-101-180



Km: 0.00                      Tipo: 3                      Sent: 0



Km: 14.39                      Tipo: 1                      Sent: 0

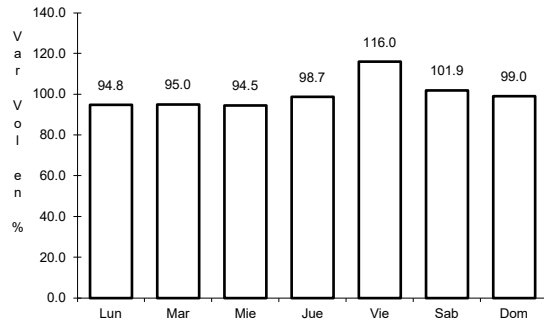


Km: 26.46                      Tipo: 1                      Sent: 0

17 CARR: Libramiento de San Germán

CLAVE:

RUTA: MEX-101-180

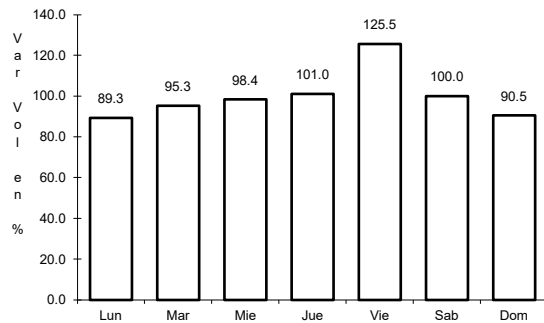


Km: 0.00                      Tipo: 3                      Sent: 0

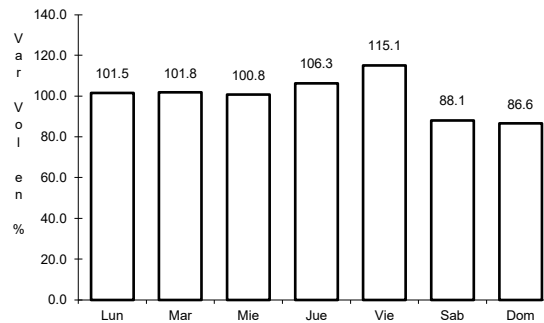
18 CARR: Libramiento de Santander Jiménez

CLAVE:

RUTA: MEX-101



Km: 0.00                      Tipo: 3                      Sent: 0

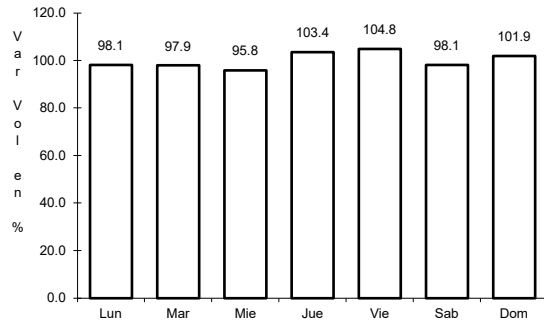


Km: 1.70                      Tipo: 3                      Sent: 0

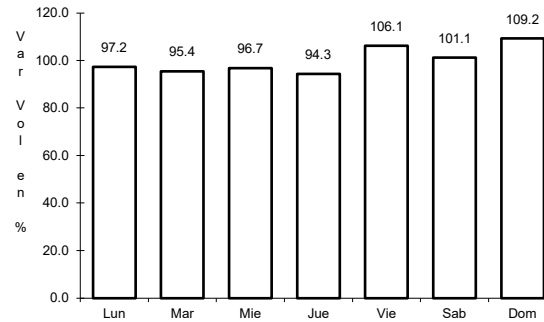
19 CARR: Libramiento Estación Manuel - González

CLAVE: 28002

RUTA: MEX-081



Km: 0.00                      Tipo: 3                      Sent: 0

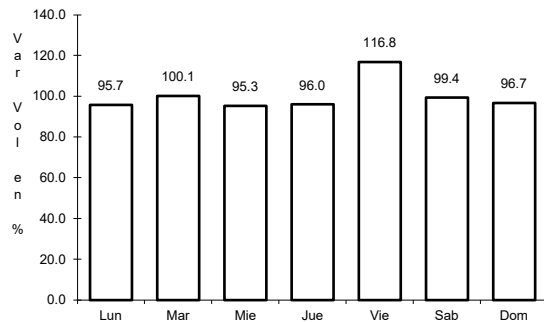


Km: 24.80                      Tipo: 1                      Sent: 0

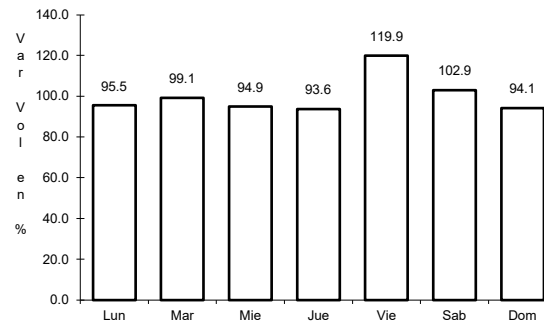
20 CARR: Libramiento General Francisco Villa

CLAVE:

RUTA: MEX-101-180



Km: 0.00                      Tipo: 3                      Sent: 0

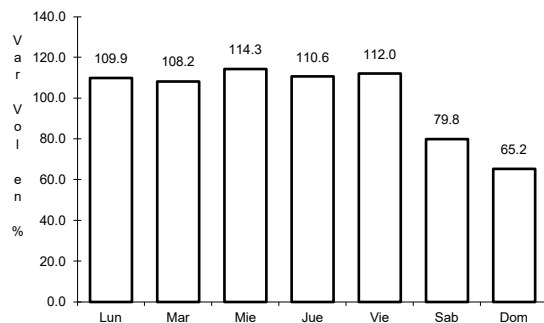


Km: 6.40                      Tipo: 1                      Sent: 0

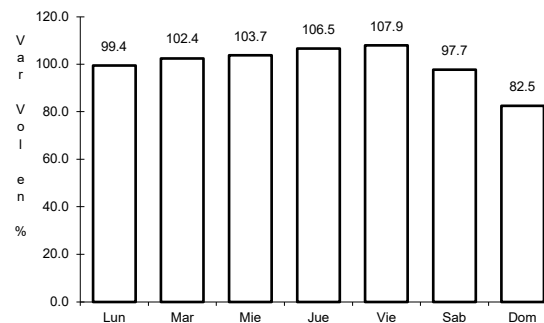
21 CARR: Matamoros - Playa Lauro Villar

CLAVE: 28078

RUTA: MEX-002



Km: 0.00                      Tipo: 3                      Sent: 1

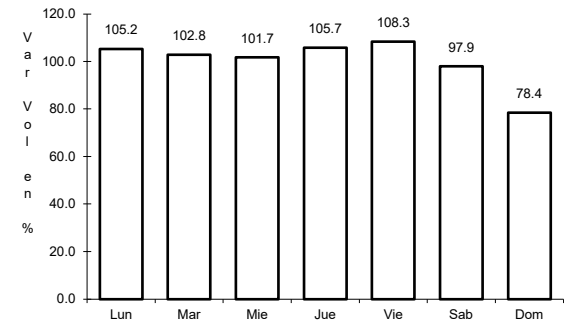
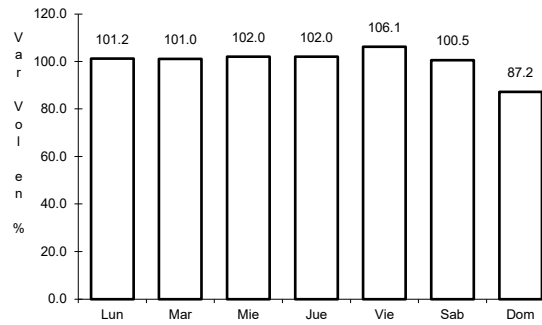
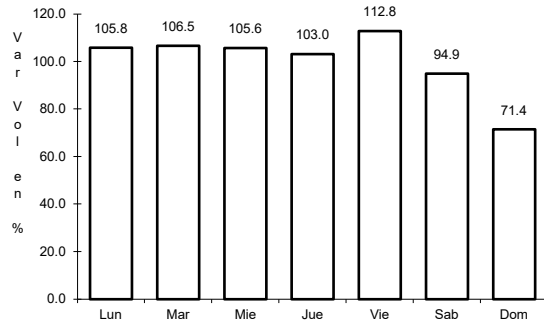


Km: 0.00                      Tipo: 3                      Sent: 2

22 CARR: Matamoros - Reynosa

CLAVE: 28077

ruta: MEX-002



Km: 0.00      Tipo: 3      Sent: 0

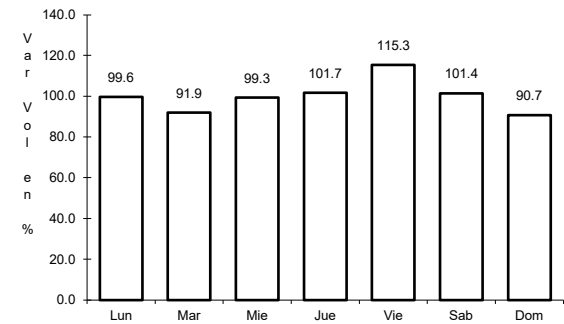
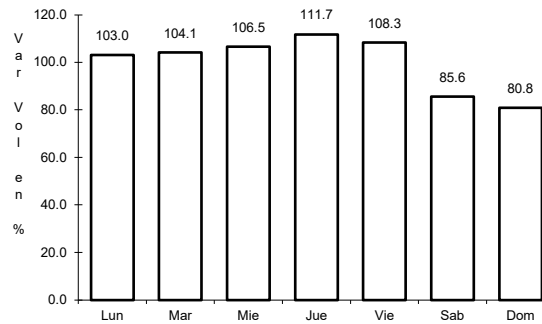
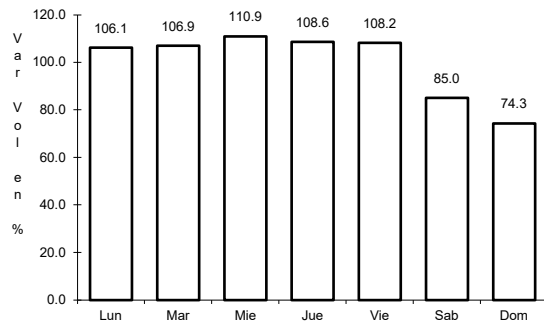
Km: 98.00      Tipo: 1      Sent: 1

Km: 98.00      Tipo: 1      Sent: 2

23 CARR: Monterrey - Mier

CLAVE: 00127

ruta: MEX-054



Km: 19.12      Tipo: 1      Sent: 1

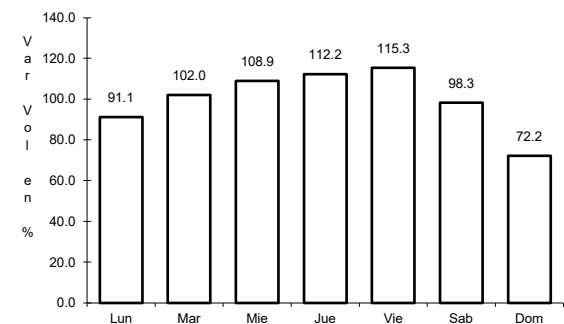
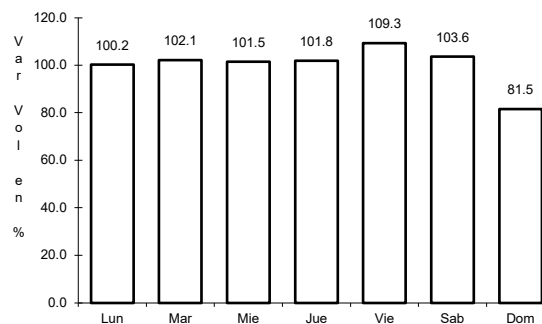
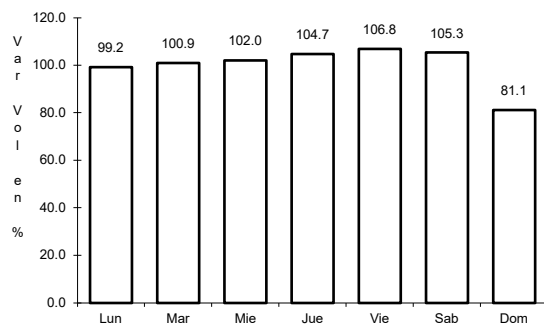
Km: 19.12      Tipo: 1      Sent: 2

Km: 156.21      Tipo: 1      Sent: 0

24 CARR: Monterrey - Nuevo Laredo (Libre)

CLAVE: 00463

ruta: MEX-085



Km: 12.10      Tipo: 3      Sent: 1

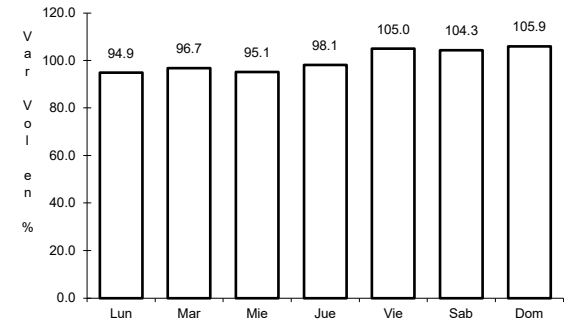
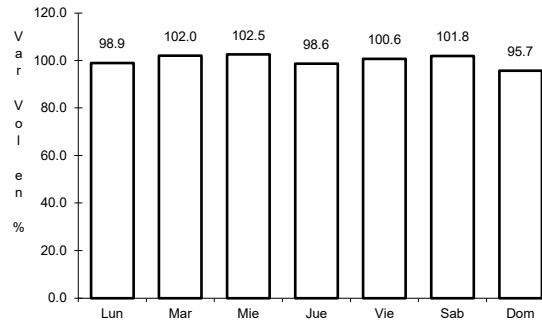
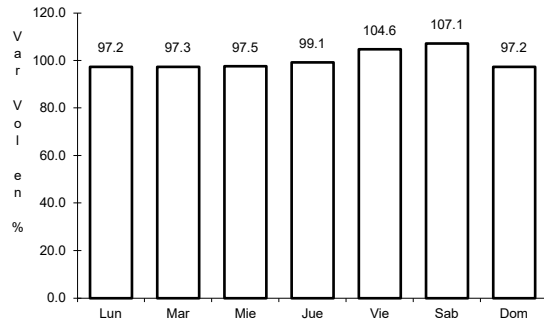
Km: 12.10      Tipo: 3      Sent: 2

Km: 124.40      Tipo: 3      Sent: 0

25 CARR: Monterrey - Reynosa (Libre)

CLAVE: 00088

RUTA: MEX-040



Km: 19.10      Tipo: 1      Sent: 1

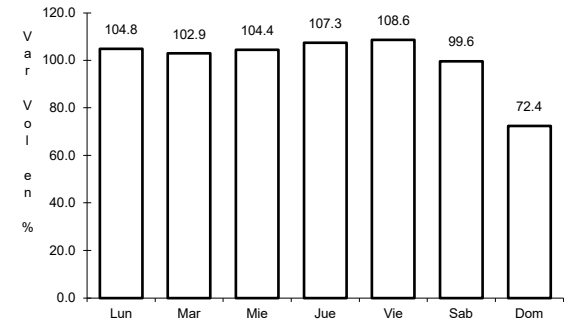
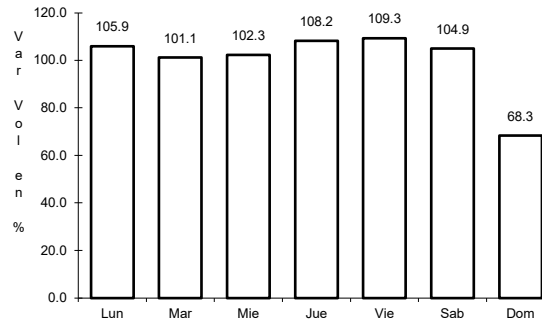
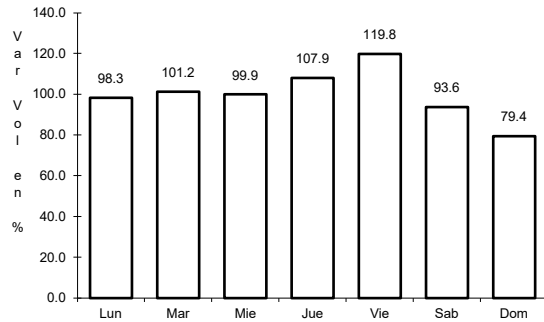
Km: 19.10      Tipo: 1      Sent: 2

Km: 125.00      Tipo: 1      Sent: 0

26 CARR: Nuevo Laredo - Piedras Negras

CLAVE: 00503

RUTA: MEX-002



Km: 36.18      Tipo: 1      Sent: 0

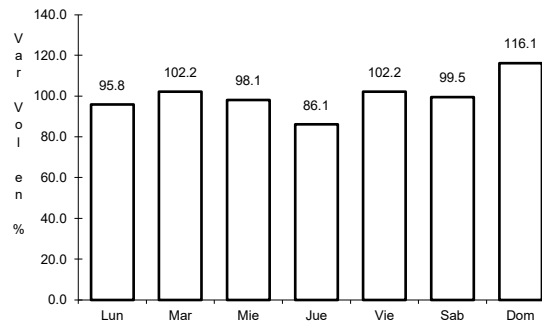
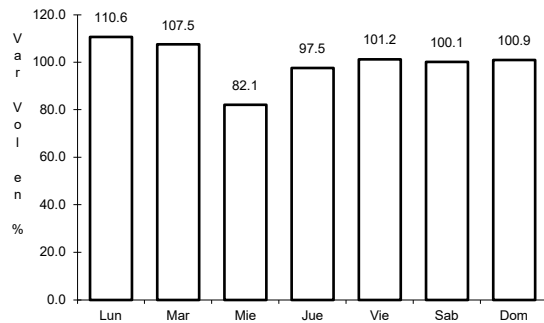
Km: 169.30      Tipo: 1      Sent: 1

Km: 169.30      Tipo: 1      Sent: 2

27 CARR: Paras - Nueva Ciudad Guerrero

CLAVE: 00476

RUTA: MEX-030



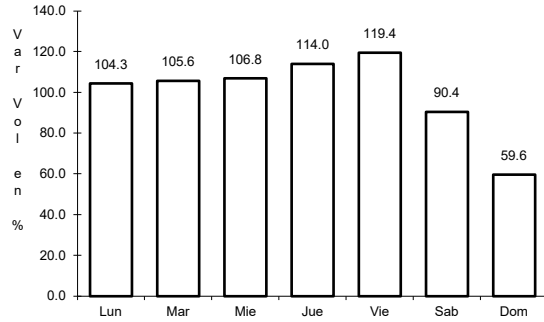
Km: 0.00      Tipo: 3      Sent: 0

Km: 32.00      Tipo: 1      Sent: 0

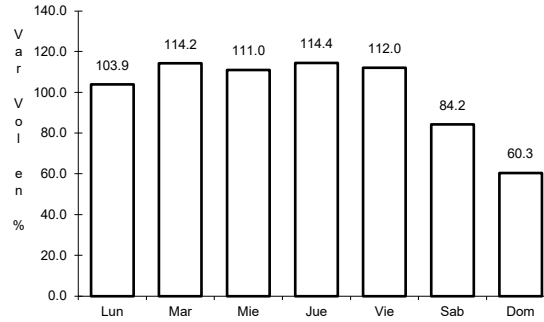
28 CARR: Petrocel - Puerto Industrial Altamira

CLAVE:

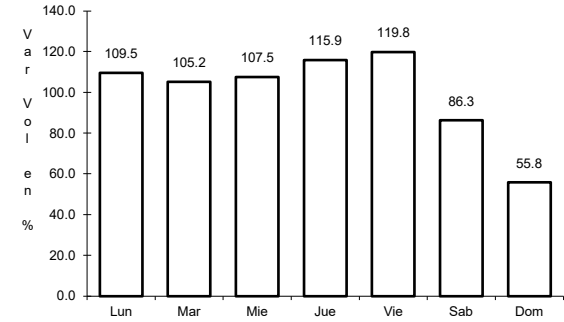
ruta: MEX-080



Km: 0.00                      Tipo: 3                      Sent: 1



Km: 0.00                      Tipo: 3                      Sent: 2

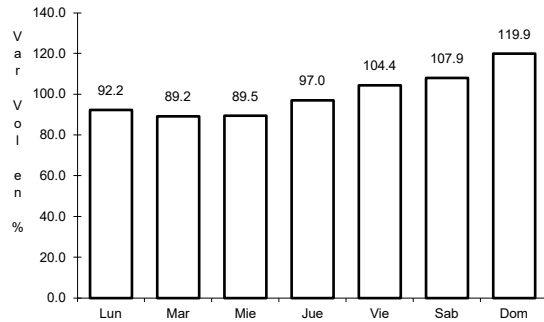


Km: 3.80                      Tipo: 3                      Sent: 1

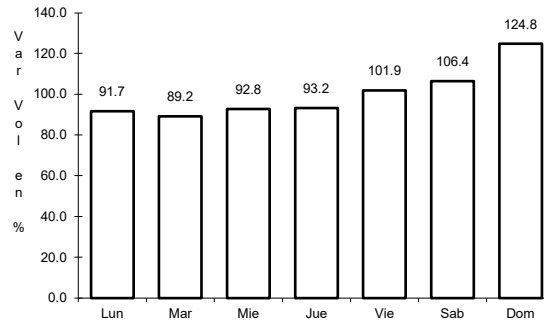
29 CARR: Ramal a Puente Tampico

CLAVE: 28020

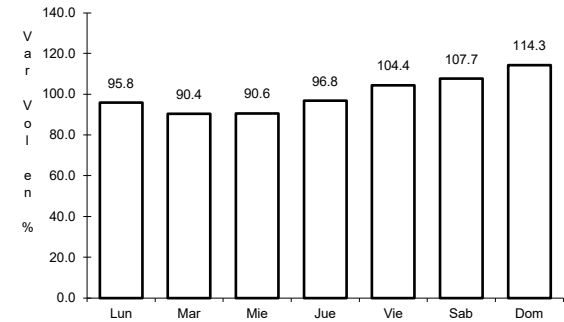
ruta: MEX-180



Km: 186.00                      Tipo: 3                      Sent: 1



Km: 186.00                      Tipo: 3                      Sent: 2

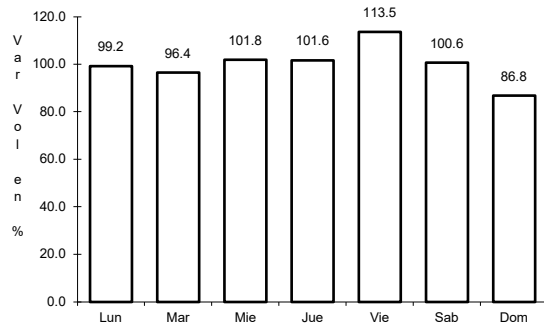


Km: 193.12                      Tipo: 1                      Sent: 1

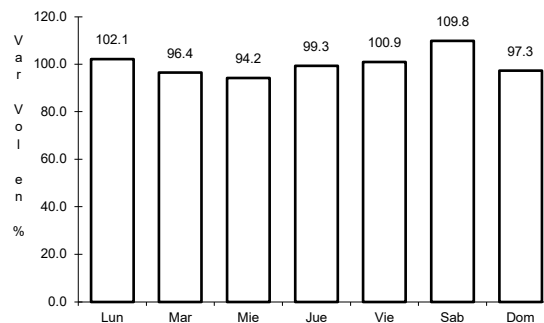
30 CARR: Ramal de Acceso a Puente Anzáldúas

CLAVE: 28619

ruta: MEX



Km: 0.00                      Tipo: 3                      Sent: 1

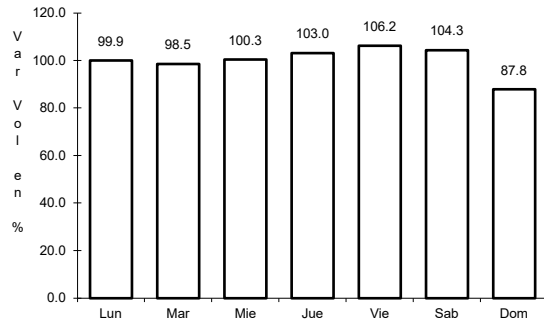


Km: 0.00                      Tipo: 3                      Sent: 2

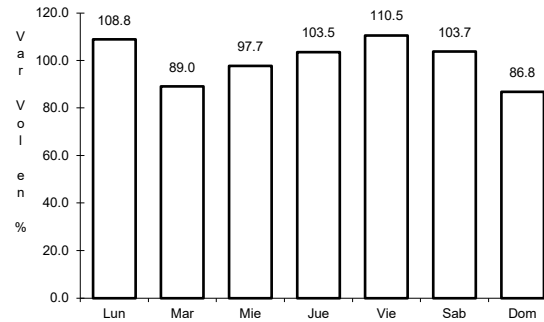
32 CARR: Reynosa - Nuevo Laredo

CLAVE: 28076

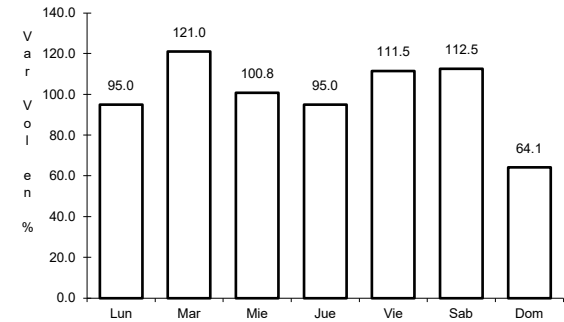
ruta: MEX-002



Km: 0.00      Tipo: 3      Sent: 1



Km: 0.00      Tipo: 3      Sent: 2

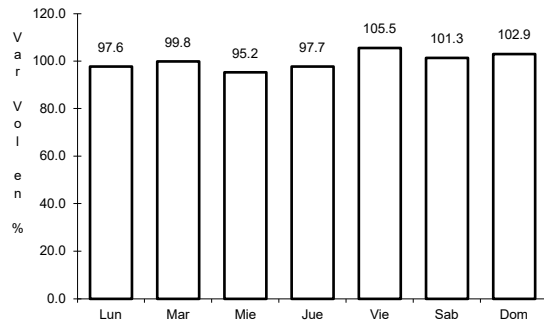


Km: 221.08      Tipo: 1      Sent: 0

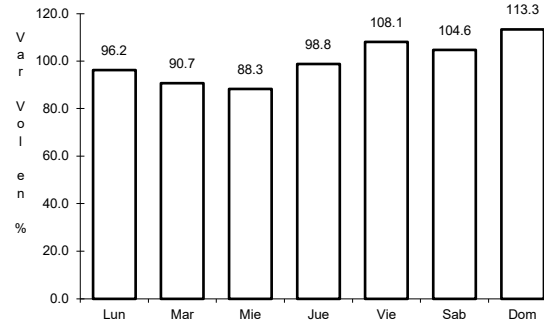
33 CARR: Soto La Marina - La Coma

CLAVE: 28052

ruta: MEX-180



Km: 150.00      Tipo: 3      Sent: 0

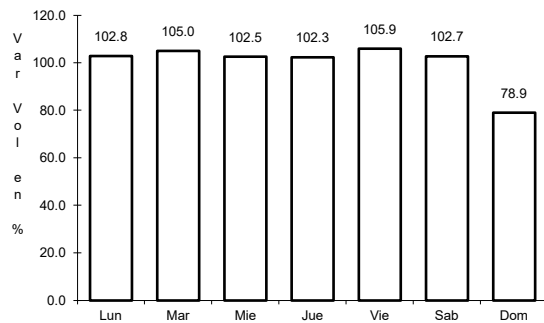


Km: 232.23      Tipo: 1      Sent: 0

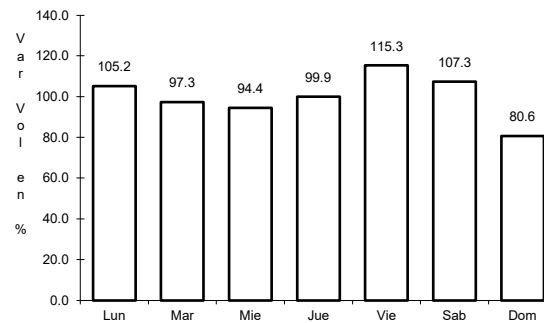
34 CARR: Tampico - Cd. Mante

CLAVE: 28163

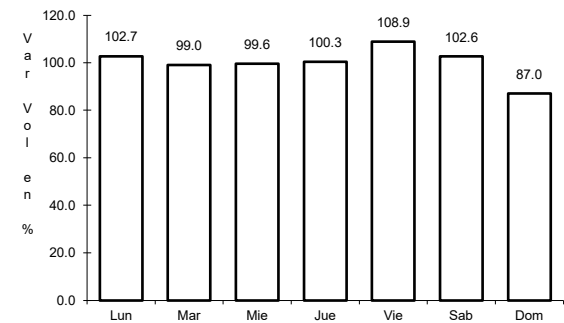
ruta: MEX-080



Km: 14.79      Tipo: 1      Sent: 1



Km: 14.79      Tipo: 1      Sent: 2

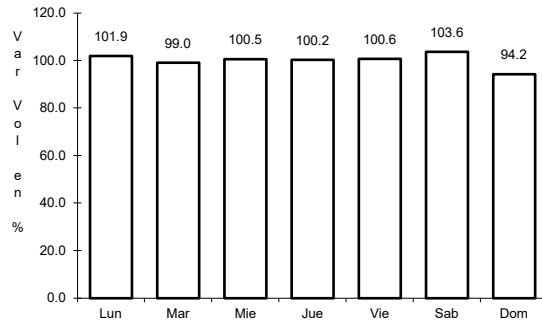


Km: 155.00      Tipo: 1      Sent: 0

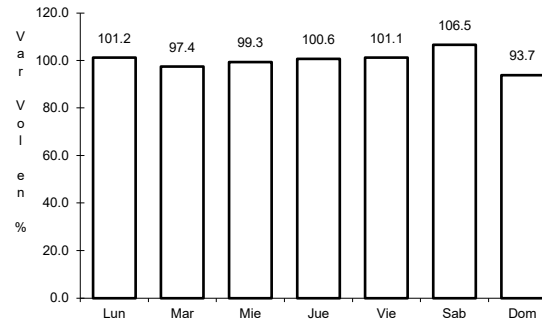
35 CARR: Túxпам - Tampico

CLAVE: 00529

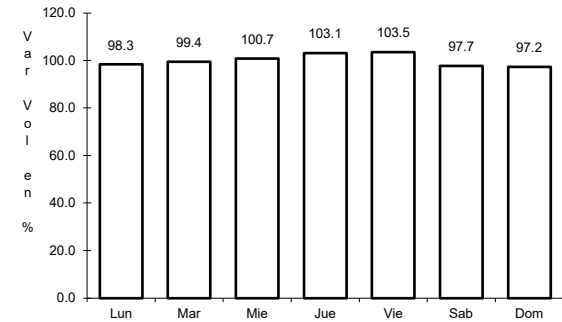
ruta: MEX-180



Km: 0.00      Tipo: 3      Sent: 0



Km: 78.60      Tipo: 1      Sent: 0

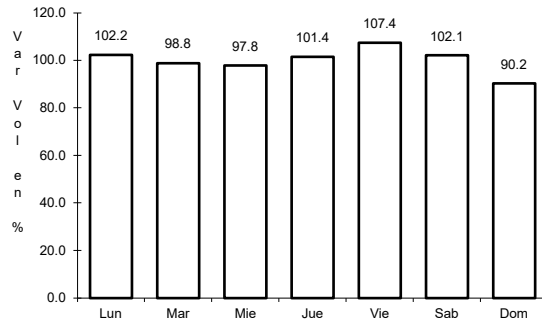


Km: 186.85      Tipo: 3      Sent: 1

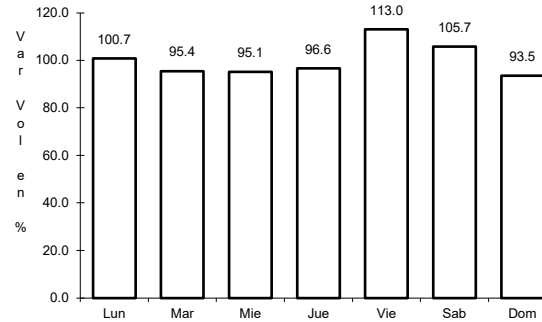
36 CARR: Viaducto de Reynosa

CLAVE:

ruta: MEX



Km: 80.50      Tipo: 3      Sent: 0

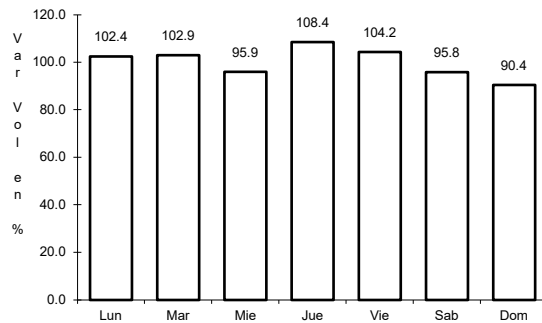


Km: 95.40      Tipo: 1      Sent: 0

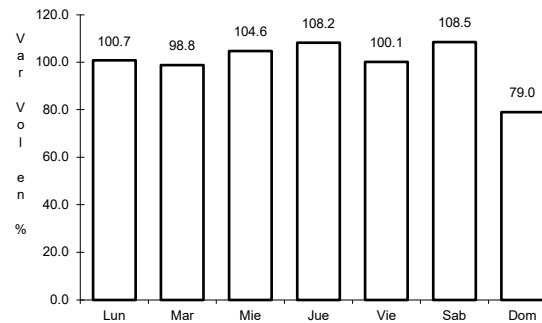
37 CARR: Libramiento de Reynosa Sur II

CLAVE:

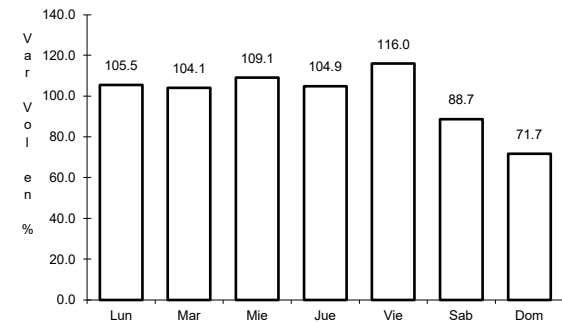
ruta: MEX-040D



Km: 0.00      Tipo: 3      Sent: 1



Km: 0.00      Tipo: 3      Sent: 2

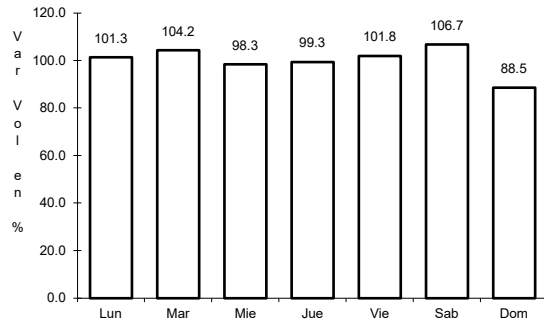


Km: 35.80      Tipo: 1      Sent: 0

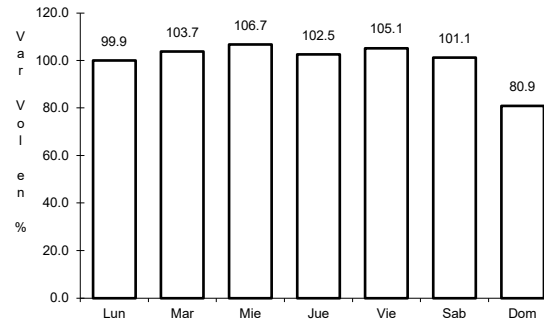
38 CARR: Libramiento Poniente de Tampico (Cuota)

CLAVE: 28051

ruta: MEX-070D



Km: 0.00                      Tipo: 3                      Sent: 0

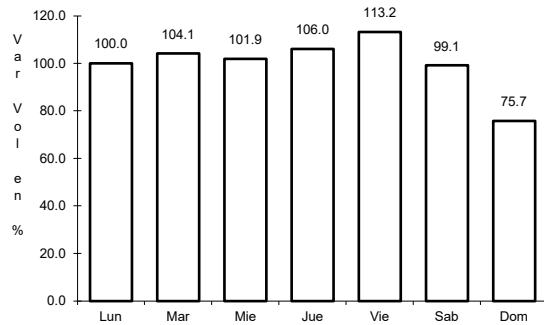


Km: 14.00                      Tipo: 1                      Sent: 0

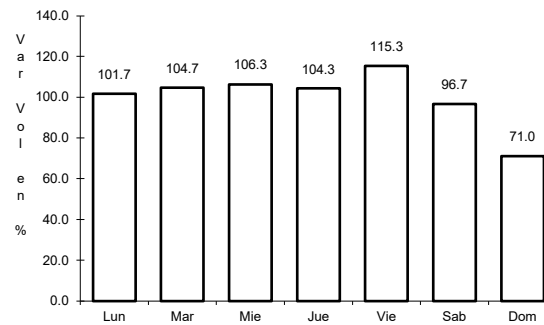
39 CARR: Matamoros - Reynosa (Cuota)

CLAVE: 28079

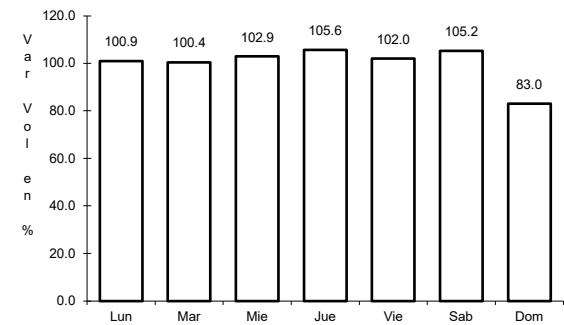
ruta: MEX-002D



Km: 26.50                      Tipo: 3                      Sent: 1



Km: 26.50                      Tipo: 3                      Sent: 2

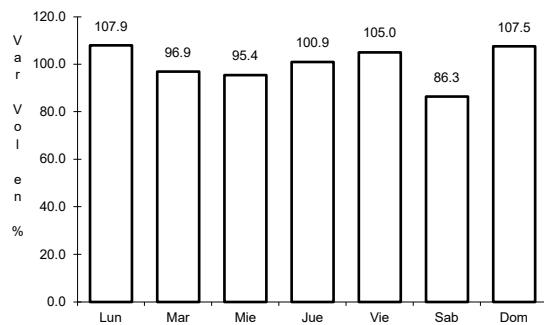


Km: 62.98                      Tipo: 3                      Sent: 1

40 CARR: Aldama - Barra El Tordo

CLAVE: 28620

ruta: TAM

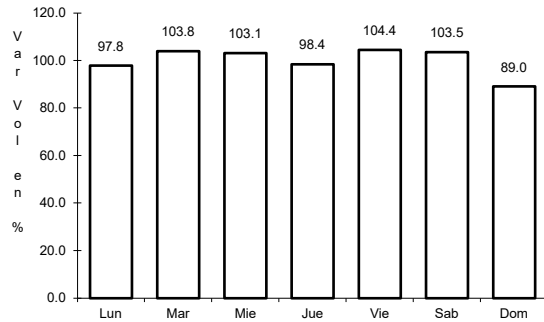


Km: 0.00                      Tipo: 3                      Sent: 0

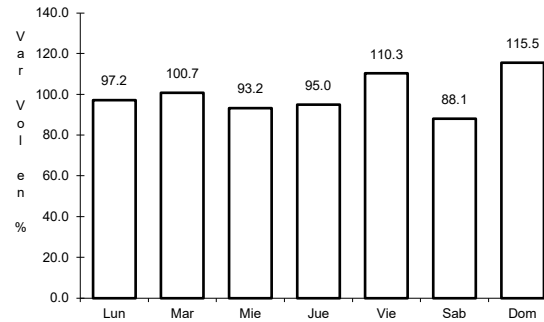
41 CARR: Barretal - Nueva Villa de Padilla

CLAVE: 28001

RUTA: TAM-001



Km: 0.00                      Tipo: 3                      Sent: 0

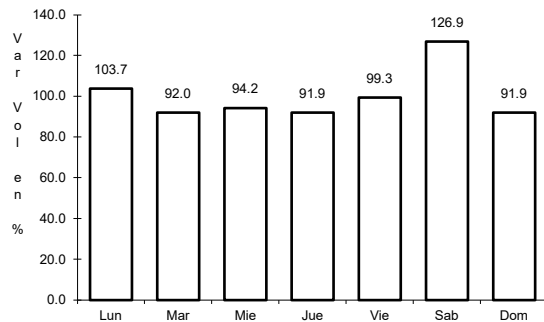


Km: 24.50                      Tipo: 1                      Sent: 0

42 CARR: China - Méndez

CLAVE: 00191

RUTA: NL-TAM

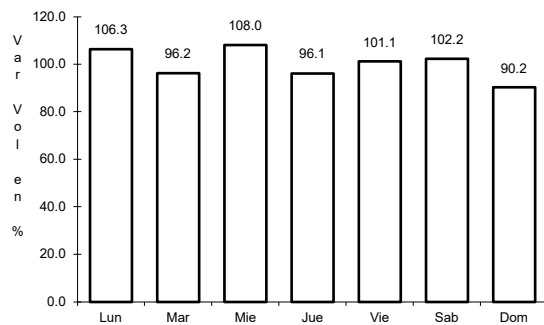


Km: 0.00                      Tipo: 3                      Sent: 0

43 CARR: Ébano - Estación Manuel

CLAVE: 24624

RUTA: SLP-TAM

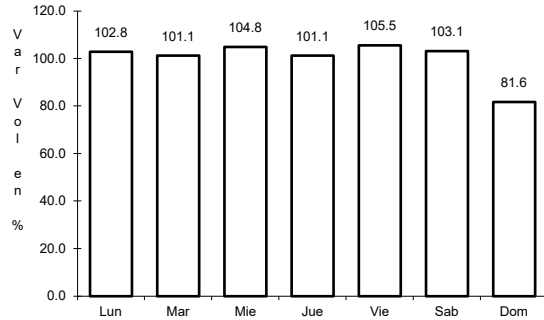


Km: 0.00                      Tipo: 3                      Sent: 0

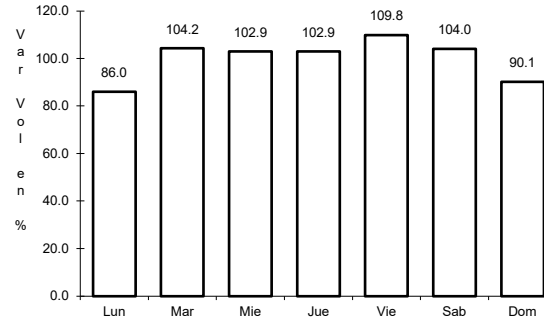
44 CARR: El Limón - Ocampo

CLAVE: 28019

ruta: TAM-019



Km: 0.00      Tipo: 3      Sent: 0

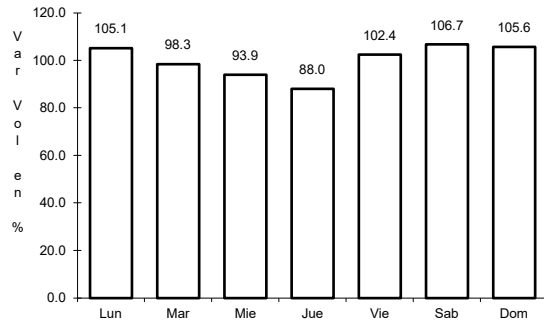


Km: 43.00      Tipo: 1      Sent: 0

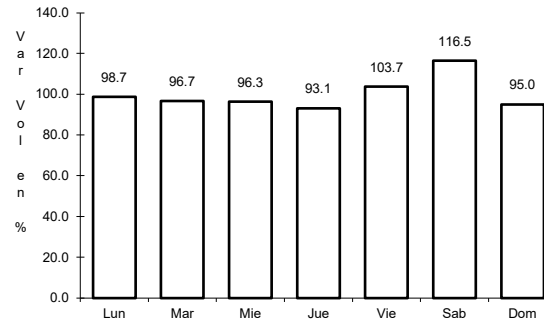
45 CARR: Ent. Huisachito - Nuevo Laredo

CLAVE: 00074

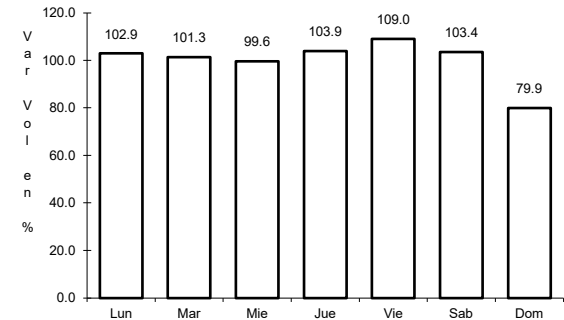
ruta: NL-001-TAM



Km: 0.00      Tipo: 3      Sent: 0



Km: 47.00      Tipo: 1      Sent: 0

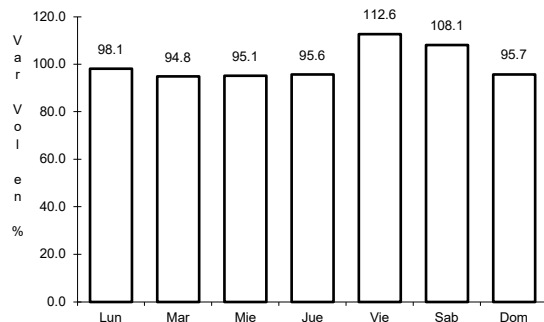


Km: 51.00      Tipo: 1      Sent: 0

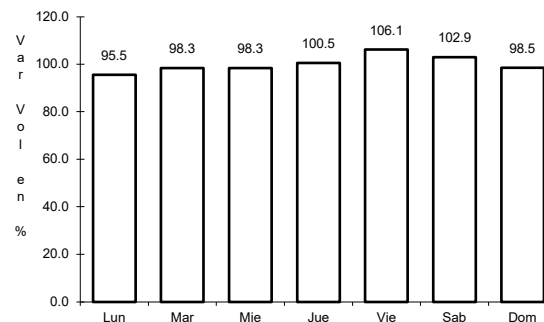
46 CARR: Ent. Las Blancas - Río Bravo

CLAVE: 28003

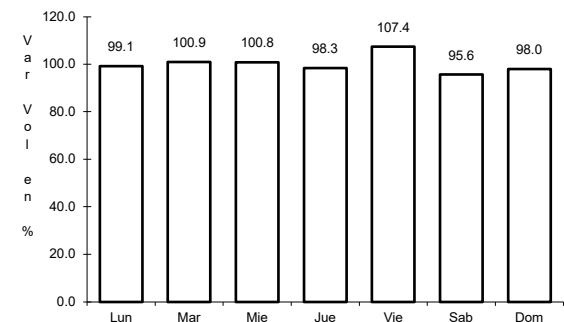
ruta: TAM-003



Km: 0.00      Tipo: 3      Sent: 0



Km: 21.00      Tipo: 1      Sent: 1

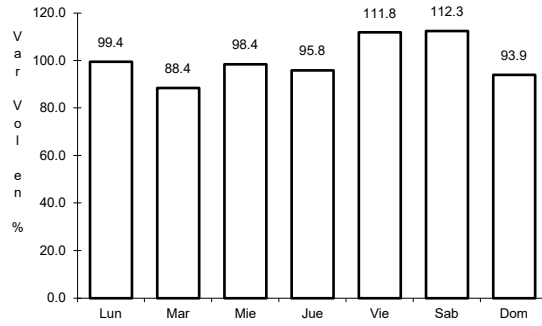


Km: 21.00      Tipo: 1      Sent: 2

47 CARR: La Joya - Méndez

CLAVE: 28623

ruta: TAM



Km: 0.00

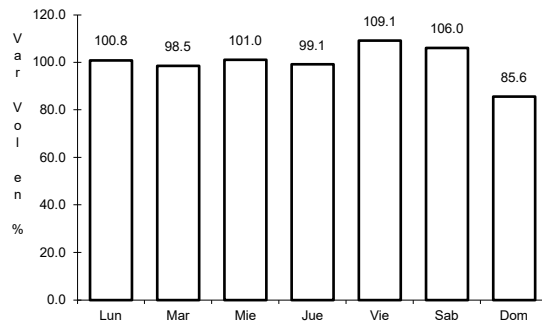
Tipo: 3

Sent: 0

48 CARR: Las Yescas - Valle Hermoso

CLAVE: 28614

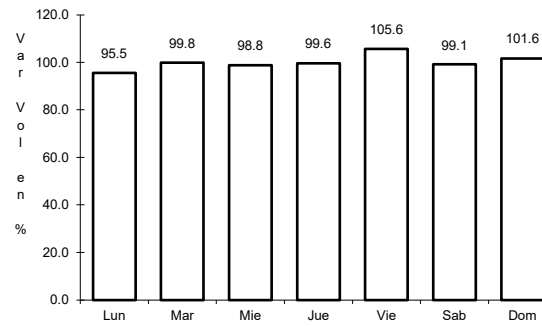
ruta: TAM



Km: 0.00

Tipo: 3

Sent: 0



Km: 24.50

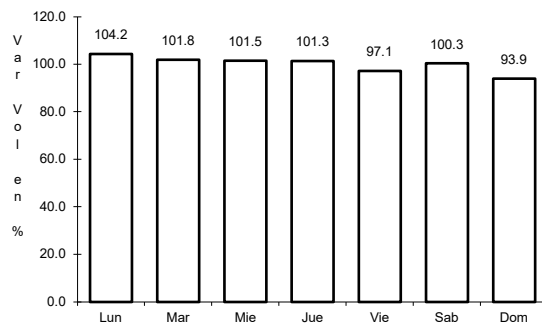
Tipo: 1

Sent: 0

49 CARR: Libramiento de Cd. Victoria

CLAVE: 28282

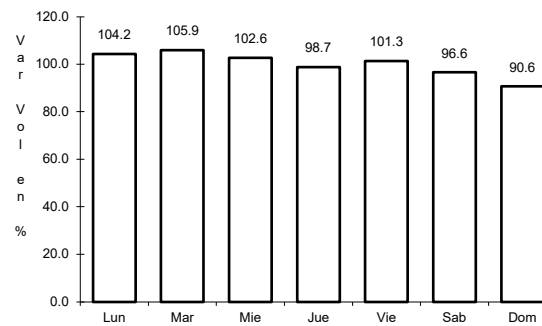
ruta: TAM



Km: 0.00

Tipo: 3

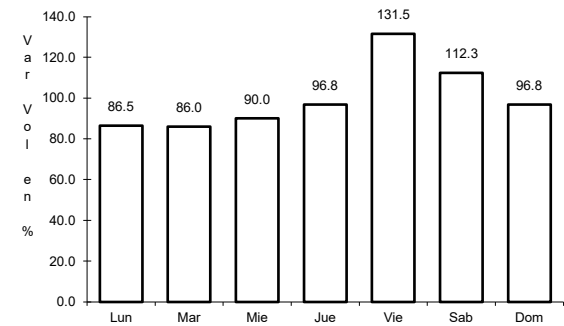
Sent: 1



Km: 0.00

Tipo: 3

Sent: 2



Km: 25.90

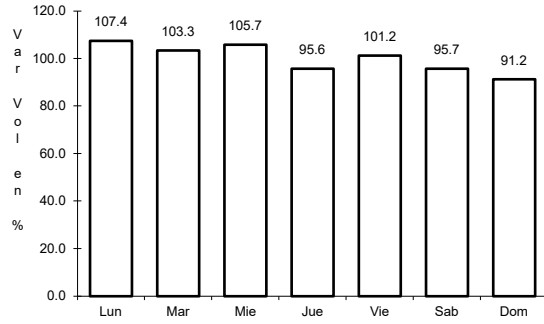
Tipo: 1

Sent: 1

50 CARR: Libramiento de Mier

CLAVE: 28282

ruta: TAMPS



Km: 0.00

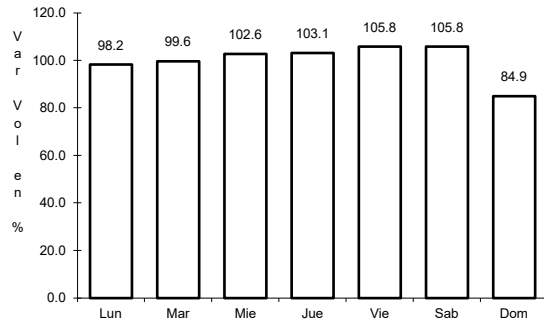
Tipo: 3

Sent: 0

51 CARR: Libramiento de Nuevo Laredo

CLAVE: 28030

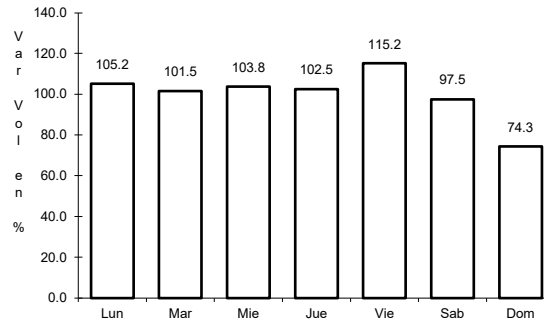
ruta: TAM



Km: 0.00

Tipo: 3

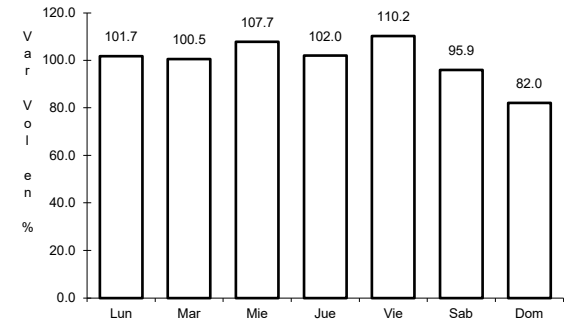
Sent: 1



Km: 0.00

Tipo: 3

Sent: 2



Km: 18.00

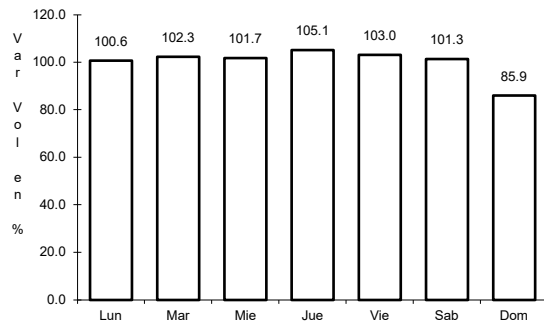
Tipo: 1

Sent: 1

52 CARR: Libramiento de Nuevo Laredo II

CLAVE: 28626

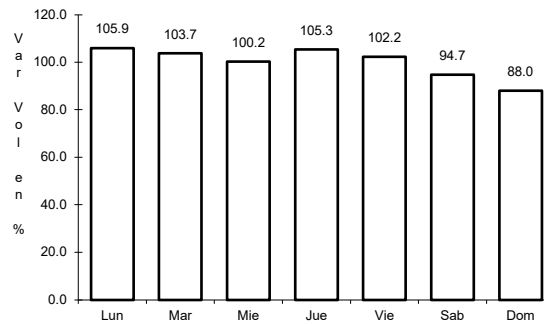
ruta: TAM



Km: 0.00

Tipo: 3

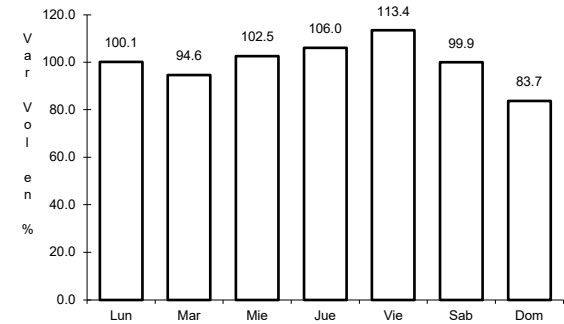
Sent: 0



Km: 32.20

Tipo: 1

Sent: 1



Km: 32.20

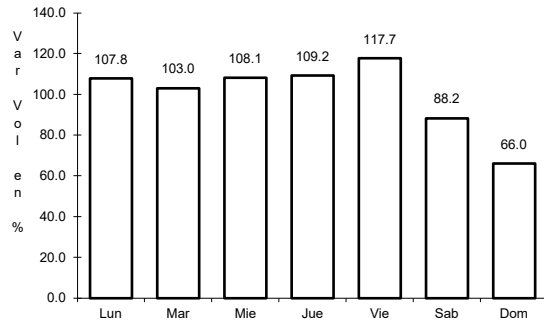
Tipo: 1

Sent: 2

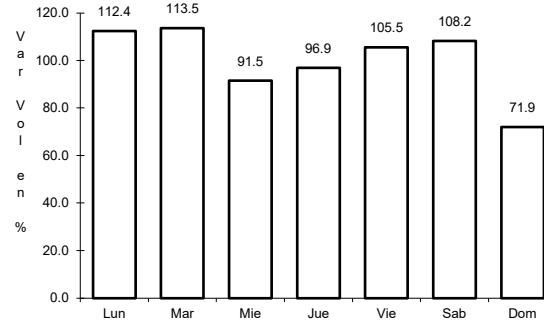
53 CARR: Libramiento de Río Bravo

CLAVE: 28002

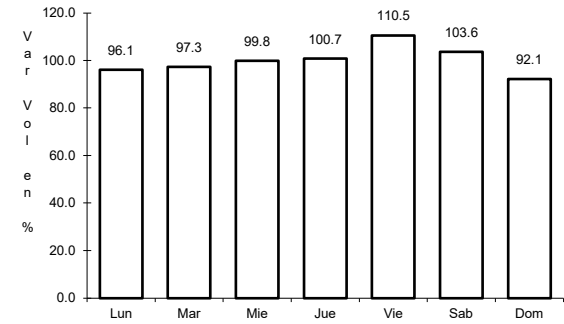
ruta: TAM



Km: 0.00                      Tipo: 3                      Sent: 1



Km: 0.00                      Tipo: 3                      Sent: 2

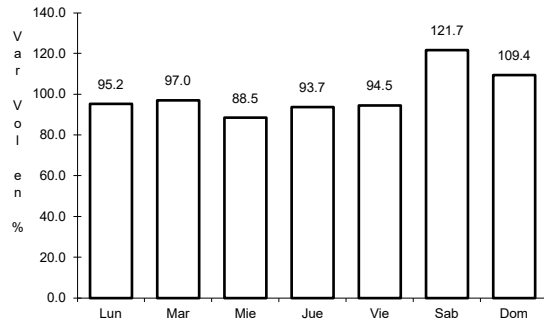


Km: 13.10                      Tipo: 1                      Sent: 1

54 CARR: Los Guerra - Los Herreras

CLAVE: 19031

ruta: TAM-NL

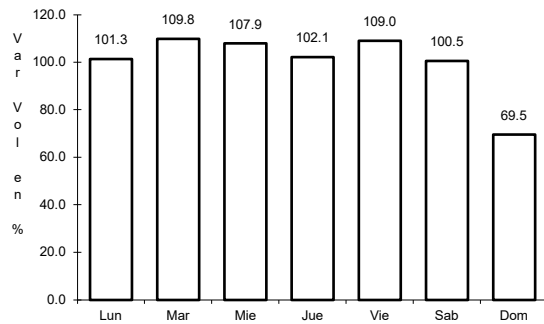


Km: 73.00                      Tipo: 1                      Sent: 0

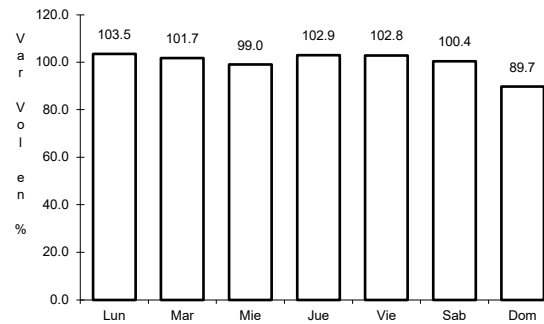
55 CARR: Peña Blanca - Cd. Camargo

CLAVE: 00102

ruta: NL-TAM



Km: 0.00                      Tipo: 3                      Sent: 0

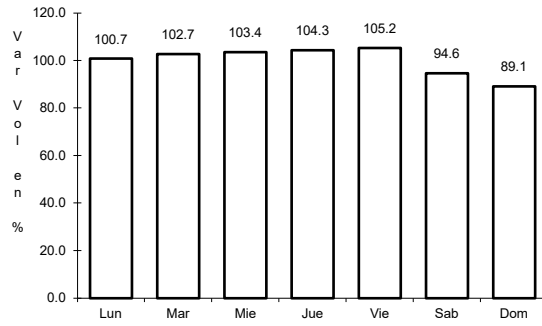


Km: 65.00                      Tipo: 1                      Sent: 0

56 CARR: Potrero Nuevo - Rancho El Mezquital

CLAVE: 28615

RUTA: TAM



Km: 0.00

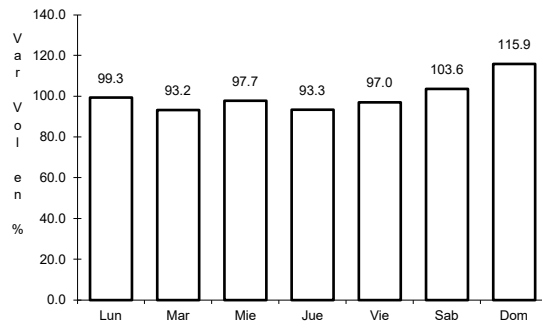
Tipo: 3

Sent: 0

57 CARR: Ramal a Gómez Farías

CLAVE: 28020

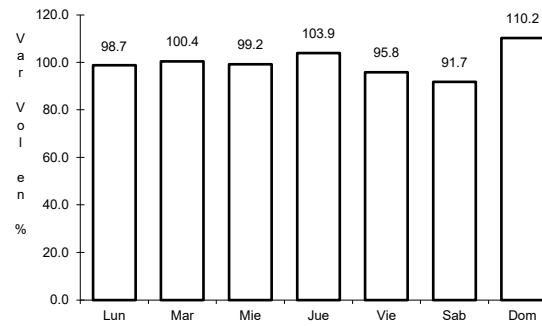
RUTA: TAM-020



Km: 0.00

Tipo: 3

Sent: 0



Km: 11.00

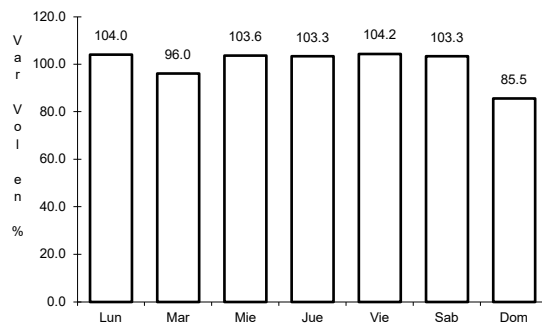
Tipo: 1

Sent: 0

58 CARR: Ramal a Xicoténcatl

CLAVE: 28619

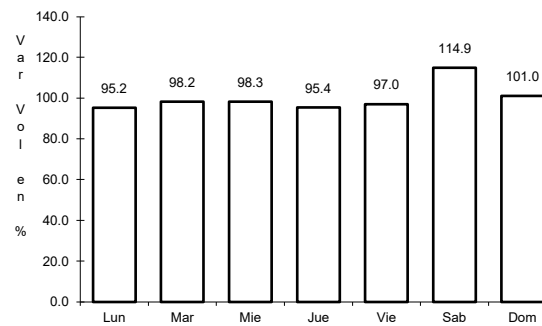
RUTA: TAM



Km: 0.00

Tipo: 3

Sent: 0



Km: 13.00

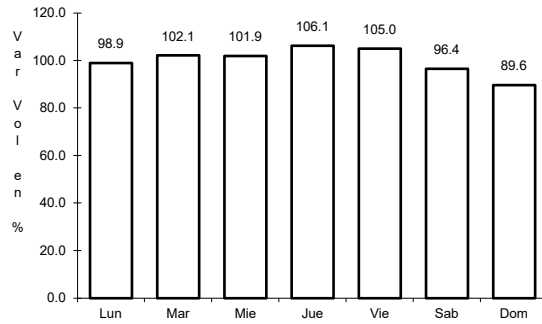
Tipo: 1

Sent: 0

59 CARR: San Fernando - Carboneras

CLAVE: 28618

ruta: TAM



Km: 0.00

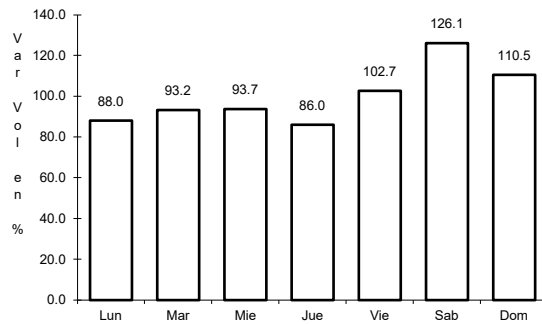
Tipo: 3

Sent: 0

60 CARR: Soto La Marina - La Pesca

CLAVE: 28049

ruta: TAM-070



Km: 0.00

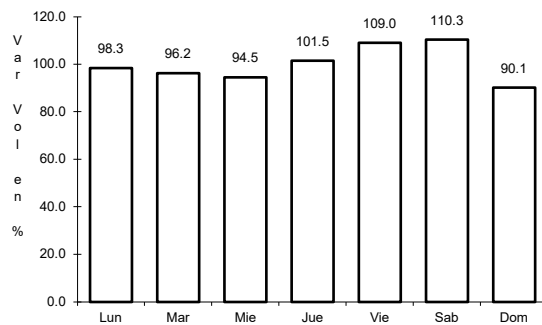
Tipo: 3

Sent: 0

61 CARR: T. C. (Valle Hermoso - Empalme) - Matamoras

CLAVE: 28005

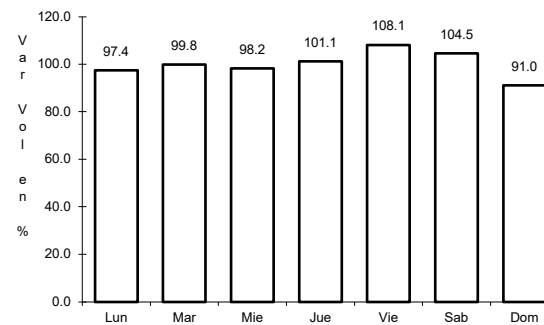
ruta: TAM-005



Km: 0.00

Tipo: 3

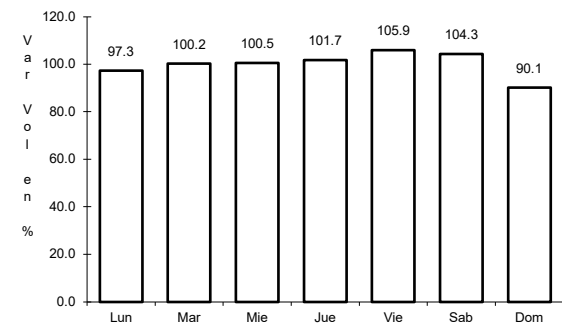
Sent: 0



Km: 33.90

Tipo: 1

Sent: 1



Km: 33.90

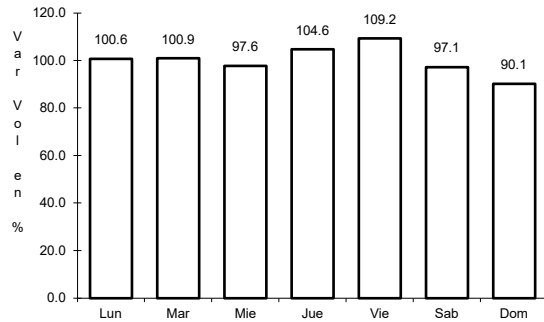
Tipo: 1

Sent: 2

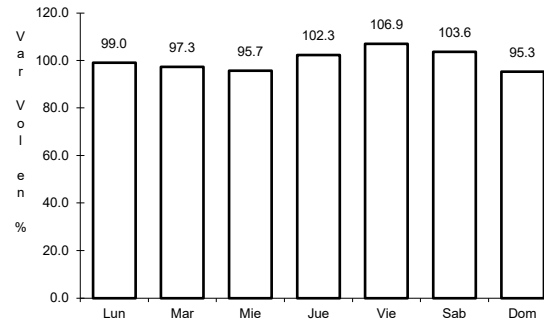
62 CARR: T. C. Libramiento Cd. Victoria - San Antonio

CLAVE:

RUTA: TAM-126



Km: 0.00                      Tipo: 3                      Sent: 0

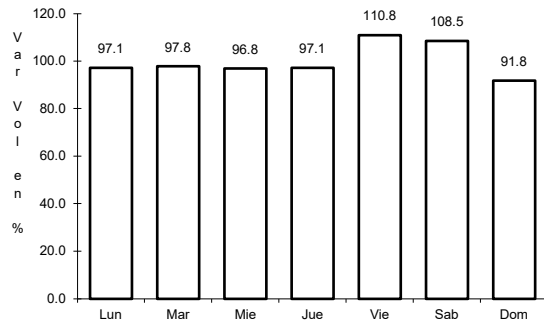


Km: 37.50                      Tipo: 1                      Sent: 0

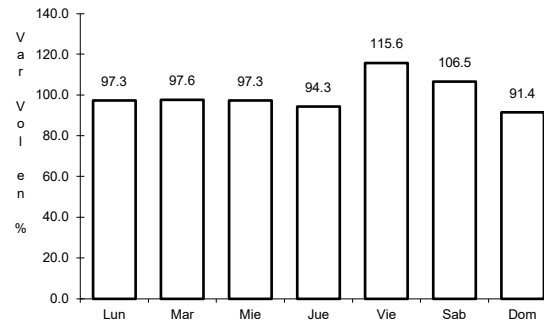
63 CARR: Valle Hermoso - Empalme

CLAVE: 28004

RUTA: TAM-004



Km: 0.00                      Tipo: 3                      Sent: 0

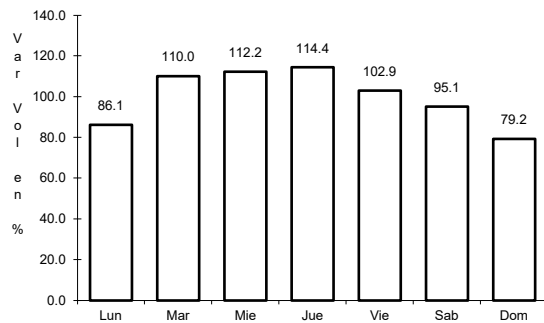


Km: 28.38                      Tipo: 1                      Sent: 0

64 CARR: Ent. El Ojito - Abasolo

CLAVE: 28579

RUTA: MEX-107-TAM

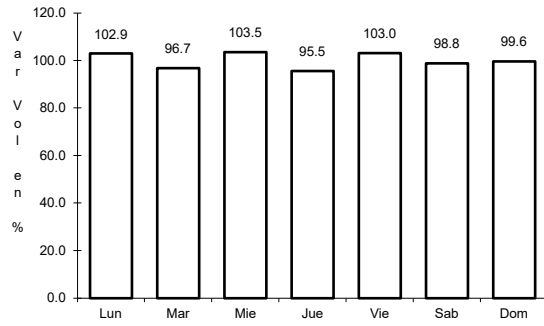


Km: 0.00                      Tipo: 3                      Sent: 0

65 CARR: Santander Jiménez - Abasolo

CLAVE: 28579

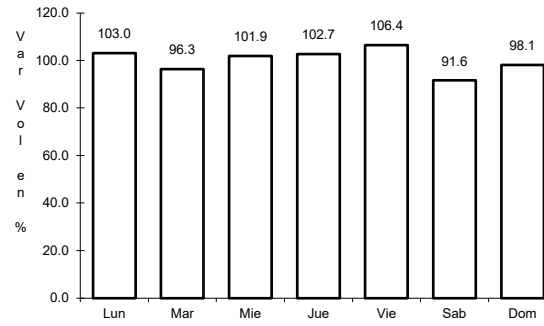
RUTA: MEX-107-TAM



Km: 0.00

Tipo: 3

Sent: 0



Km: 20.00

Tipo: 1

Sent: 0